

Figure 4 - Condition Score 2

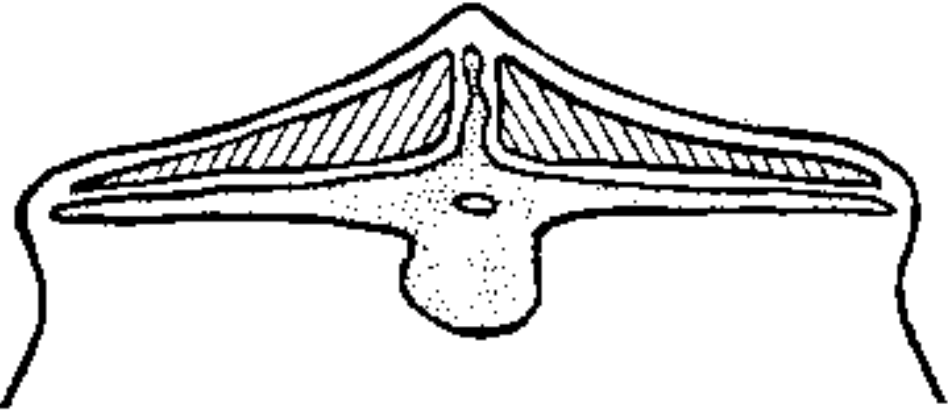


Photo 2 - Condition Score 2 (thin cow)



| [Top of Page](#) |

Condition Score 3

A cow in average body condition. The short ribs can be felt by applying slight pressure. The overhanging shelflike appearance of these bones is gone. The backbone is a rounded ridge and hook and pin bones are round and smoothed over. The anal area is filled out but there is no evidence of fat deposit.

Figure 5 - Condition Score 3

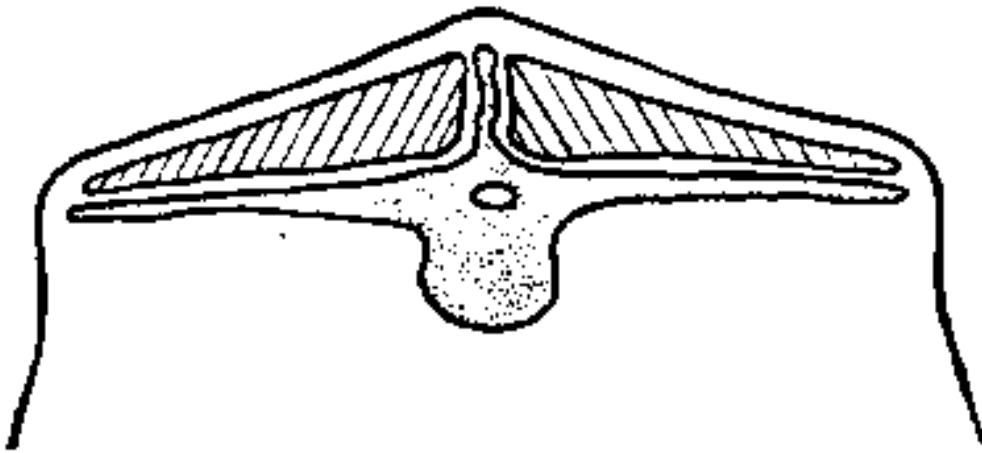


Photo 3 - Condition Score 3 (average body condition)

