

Monthly Record For:

Feed (Grains, Hay, Supplements, Pasture)	Days on Feed	Weight per Day kgs/lbs	Monthly Weight kgs/lbs	Price per Weight Unit	Monthly Feed Cost (\$)
Sub Totals			Total (A3)		Total (B3)

Monthly Record For:

Feed (Grains, Hay, Supplements, Pasture)	Days on Feed	Weight per Day kgs/lbs	Monthly Weight kgs/lbs	Price per Weight Unit	Monthly Feed Cost (\$)
Sub Totals			Total (A4)		Total (B4)

Monthly Record For:

Feed (Grains, Hay, Supplements, Pasture)	Days on Feed	Weight per Day kgs/lbs	Monthly Weight kgs/lbs	Price per Weight Unit	Monthly Feed Cost (\$)
Sub Totals			Total (A5)		Total (B5)

Monthly Record For:

Feed (Grains, Hay, Supplements, Pasture)	Days on Feed	Weight per Day kgs/lbs	Monthly Weight kgs/lbs	Price per Weight Unit	Monthly Feed Cost (\$)
Sub Totals			Total (A6)		Total (B6)

Monthly Record For:

Feed (Grains, Hay, Supplements, Pasture)	Days on Feed	Weight per Day kgs/lbs	Monthly Weight kgs/lbs	Price per Weight Unit	Monthly Feed Cost (\$)
Sub Totals			Total (A7)		Total (B7)

Monthly Record For:

Feed (Grains, Hay, Supplements, Pasture)	Days on Feed	Weight per Day kgs/lbs	Monthly Weight kgs/lbs	Price per Weight Unit	Monthly Feed Cost (\$)
Sub Totals			Total (A8)		Total (B8)

Monthly Record For:

Feed (Grains, Hay, Supplements, Pasture)	Days on Feed	Weight per Day kgs/lbs	Monthly Weight kgs/lbs	Price per Weight Unit	Monthly Feed Cost (\$)
Sub Totals			Total (A9)		Total (B9)

Monthly Record For:

Feed (Grains, Hay, Supplements, Pasture)	Days on Feed	Weight per Day kgs/lbs	Monthly Weight kgs/lbs	Price per Weight Unit	Monthly Feed Cost (\$)
Sub Totals			Total (A10)		Total (B10)

Monthly Record For:

Feed (Grains, Hay, Supplements, Pasture)	Days on Feed	Weight per Day kgs/lbs	Monthly Weight kgs/lbs	Price per Weight Unit	Monthly Feed Cost (\$)
Sub Totals			Total (A11)		Total (B11)

Monthly Record For:

Feed (Grains, Hay, Supplements, Pasture)	Days on Feed	Weight per Day kgs/lbs	Monthly Weight kgs/lbs	Price per Weight Unit	Monthly Feed Cost (\$)
Sub Totals			Total (A12)		Total (B12)

GROWTH CHART

Growth Chart



1. Mark the **initial weight** at the appropriate location on the left-hand side of the table.
2. Mark the **estimated final weight** at the appropriate location for the number of months in the feeding period.
3. Connect these 2 points with either a straight or curved line.

Each time you weigh your animal, record that weight on the **Growth Chart**, connect this point with the previous actual weight.

Your animal should be weighed monthly to keep an accurate account of its growth.

Date	Condition/Problem	Treatment Given	Cost \$
Subtotal Cost (B)			

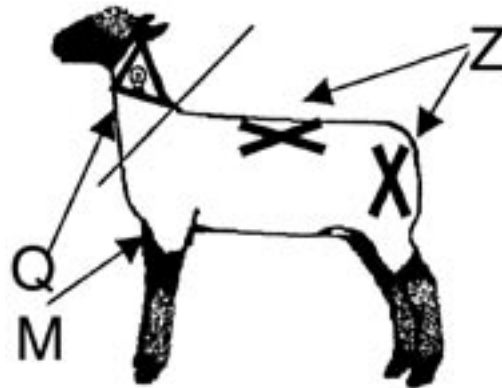
Subtotal Cost A + Subtotal Costs B = **Total Health Costs**

(A) + (B) =

Give Subcutaneous (Sub-Q) injections under loose skin of neck or front flank using tented method. Give Intramuscular (IM) injections in the neck. If label indicates a choice, use Sub-Q (under the skin) injections

NEVER inject into the leg or loin area

Mark on the diagram anywhere you have given your animal injections.



ESTRUS (HEAT) RECORD

Record estrus (heat) cycles on this page. This will help you to calculate when your animal's next estrus will occur. By keeping a record of estrus cycles, you will know when to watch for signs of estrus activity to show that breeding is more likely to be successful.

Keep a record of the following information using the indicated symbols:

estrus (E) **standing heat (S)** **bred (B)**

January

1	2	3	4	5	6	7
8	9	10	11	12	13	14
15	16	17	18	19	20	21
22	23	24	25	26	27	28
29	30	31				

February

1	2	3	4	5	6	7
8	9	10	11	12	13	14
15	16	17	18	19	20	21
22	23	24	25	26	27	28
29						

March

1	2	3	4	5	6	7
8	9	10	11	12	13	14
15	16	17	18	19	20	21
22	23	24	25	26	27	28
29	30	31				

April

1	2	3	4	5	6	7
8	9	10	11	12	13	14
15	16	17	18	19	20	21
22	23	24	25	26	27	28
29	30					

May

1	2	3	4	5	6	7
8	9	10	11	12	13	14
15	16	17	18	19	20	21
22	23	24	25	26	27	28
29	30	31				

June

1	2	3	4	5	6	7
8	9	10	11	12	13	14
15	16	17	18	19	20	21
22	23	24	25	26	27	28
29	30					

July

1	2	3	4	5	6	7
8	9	10	11	12	13	14
15	16	17	18	19	20	21
22	23	24	25	26	27	28
29	30	31				

August

1	2	3	4	5	6	7
8	9	10	11	12	13	14
15	16	17	18	19	20	21
22	23	24	25	26	27	28
29	30	31				

September

1	2	3	4	5	6	7
8	9	10	11	12	13	14
15	16	17	18	19	20	21
22	23	24	25	26	27	28
29	30					

October

1	2	3	4	5	6	7
8	9	10	11	12	13	14
15	16	17	18	19	20	21
22	23	24	25	26	27	28
29	30	31				

November

1	2	3	4	5	6	7
8	9	10	11	12	13	14
15	16	17	18	19	20	21
22	23	24	25	26	27	28
29	30					

December

1	2	3	4	5	6	7
8	9	10	11	12	13	14
15	16	17	18	19	20	21
22	23	24	25	26	27	28
29	30	31				

Ewe Breeding Record

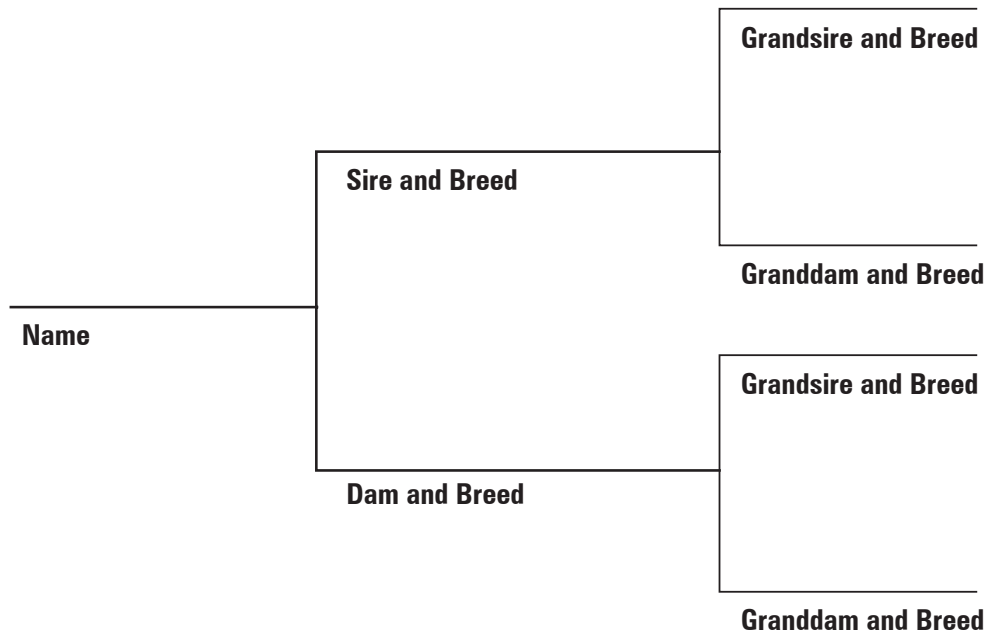
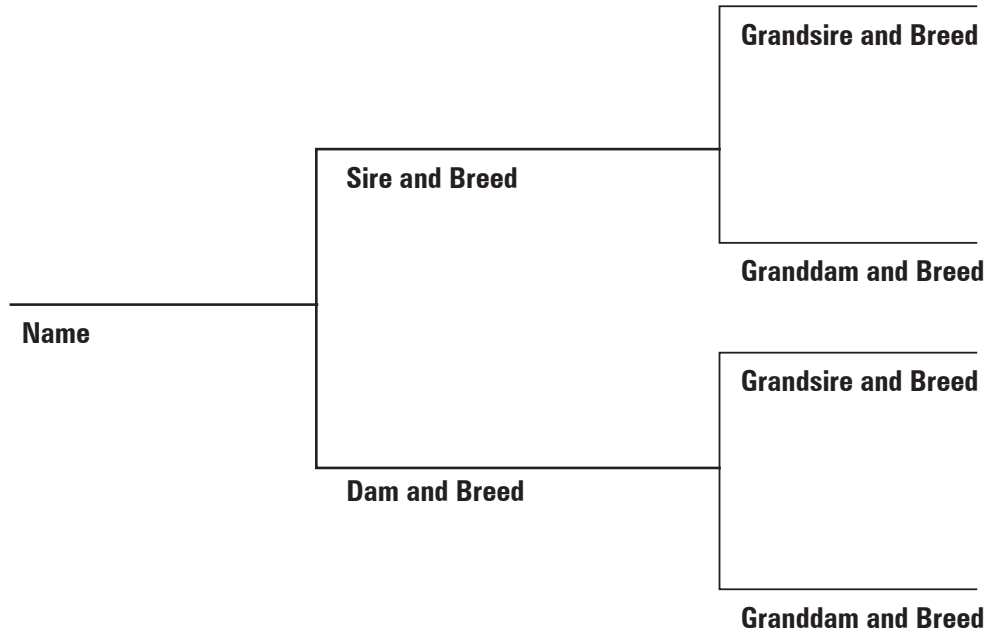
Bred By or To	Date First Exposed to Sire	Date Last Exposed to Sire	Due Date	Comments

Ewe Production Record

Offspring ID or Name	Date of Birth	Weaning Wt and Date	Other Informations (birthing differculty, etc.)

PEDIGREE RECORD

Complete this pedigree record if your breeding ewe is a purebred.



4-H PROJECT RELATED COSTS

Examples: Gas, meals, lodging, show supplies, show shirts, project event fees and workshops. The cost of new equipment, that you will use for more than one year, is recorded in the Equipment Inventory, page 9. You assume that material such as show spray or shampoo are used up yearly, so you would record them here. Cash prizes at fairs and related shows. Also include the dollar value of prizes won.

Date	Items Purchased, Expenses or Money Earned	Expense	Income
April 15	Grooming workshop - gas, entry fee, lunch, cash prize	\$ 42.00	\$10.00
Totals			

FINANCIAL SUMMARY

Income:

Sale price or estimated value of animal at end of project

Income (4-H Project Related Costs, Page 27)

+

Total Income

=

Expenses:

Purchase Price or initial value of animal

Depreciation Cost (Page 9)

+

Feed Cost (Feed Record, Page 19)

+

Total Health Costs (Page 22)

+

Other Costs (Page 26)

+

4-H Project Related Costs (Page 27)

+

Total Project Expense

=

Profit or Loss Calculation:

Total Income – Total Project Expense = **Profit or Loss**

 – =

1. Did you have profit or loss? _____

Current *Market Price per weight unit* _____

2. If you had sold this animal at today's market price, would you have made a profit or loss?

Market Price – Total Project Expense = **Profit or Loss**

 – =

LOOKING BACK

What I learned this year

This section is to be completed at the end of the 4-H year. It is meant to help you look back on all that you have learned during the past year. Look back on the goals you set for yourself at the beginning of the year (look back on page 7). How well did you meet those goals?

Did you improve or learn the skills you wanted to learn?

Did you accomplish the goals you set for yourself?

Did you try the new activities that you wanted to try?

In what ways did you help or teach others?

PHOTOGRAPHS

THE CANADIAN SHEEP IDENTIFICATION PROGRAM

Please be aware of the following points on tagging animals in your flock.

1. Producers must use the official Canadian Sheep Identification Program (CSIP) tag pink– Kurl-Lock #3; made by Ketchum or the Allflex pink or yellow tags
2. It is essential for producers to maintain accurate records and retain them for a minimum of 5 years. The Canadian Food Inspection Agency (CFIA) may access record for auditing purposes.

Sheep producers are required to tag:

- i. All sheep or lambs entering their flock for breeding purposes.
 - ii. All sheep and lambs must be tagged with a CSIP approved eartag before they leave the farm. This will include animals being transported to vet clinics, fairs or other events or locations.
3. If a tag is subsequently lost, you must immediately replace the lost tag with a new CSIP ear tag and record the identification number with as much information about the origin of the animal as is know.
4. Approved CSIP ear tags must not be removed from any live animal or tampered with for any reason and must not be re-used. If an animals dies on your property, the tag should be removed, saved and recorded with the cause of death if known.
5. CSIP tags are available through the Canadian Cooperative Wool Growers (CCWG), Lethbridge 1-800-567-3693.

Marking Guide for Breeding Ewe Project Record Book

MONTH													
Creed 3 pts													
About Me 2 pts													
About My Club 3 pts													
More About Me 4 pts													
About My Project 2 pts													
Project Planning 2 pts													
Animal Management 2 pts													
Equipment Inventory 1 pt / month													
Monthly Feed Record 2 pts / month													
Health Record 1 pt / month													
Heat Record 1 pt / month													
Breeding Record 1 pt / month													
Production Record 1 pt / month													
Pedigree Record 3 pts													
Financial Summary 5 pts													
4-H Story 10 pts													
Photographs 5 pts													
Total Score													



2005