

Light Horse Show Rules

Addendum

Acceptable English Bits Snaffles



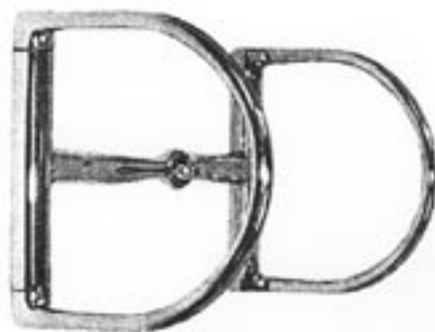
Loose Ring



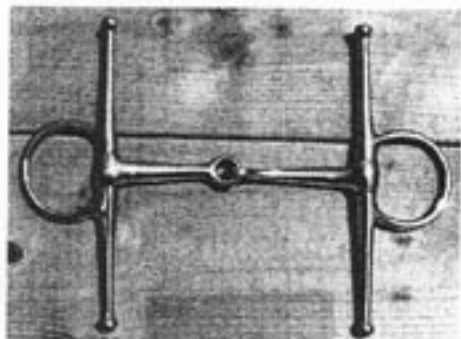
Egg But



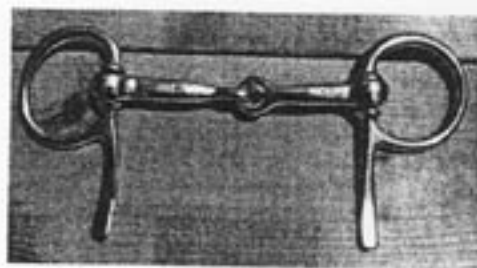
D Ring
Stainless Steel



Hunter Dee Ring



Full Cheek Stainless Steel



Half Cheek

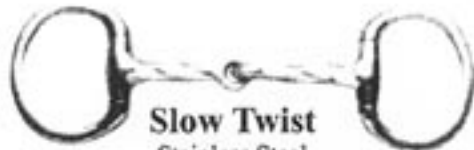


Egg But

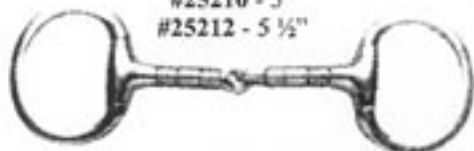


Rubber Loose Ring

MORE ACCEPTABLE SNaffle Bits



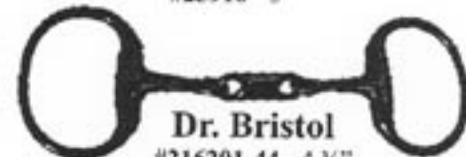
Slow Twist
Stainless Steel
#25209 - 4 3/4"
#25210 - 5"
#25212 - 5 1/2"



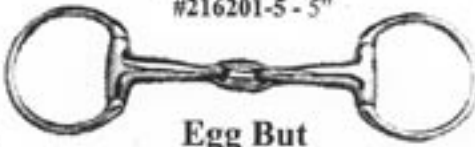
Copper Roller Eggbutt



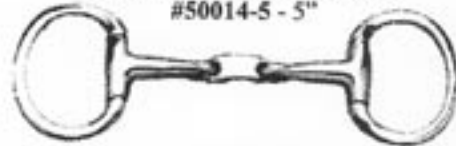
French Link
Stainless Steel
#25910 - 5"



Dr. Bristol
#216201-44 - 4 3/4"
#216201-5 - 5"



Egg But
Soother Mouthpiece
3 piece mouth, stainless steel
#50014-5 - 5"



Egg But - Bradoon mouth

Western, do NOT use in English classes



Offset Dee

Acceptable Kimberwick Bits

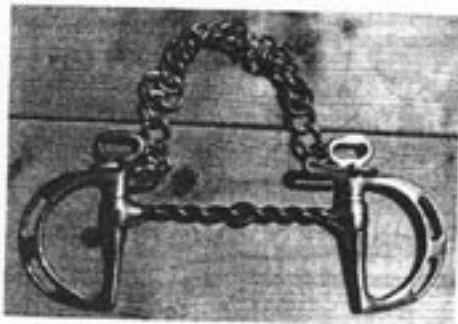


Slotted Kimberwick
2 1/2" Dees, 5" Uxter
Low Port Mouth Stainless Steel
#211010 - 5"



Slotted Kimberwick
Copper Mouth, Stainless Steel Cheeks - 5"
#2517

Not Acceptable Kimberwick bits



Slotted Kimberwick
Twisted Wire mouth, Stainless Cheeks
#255604



Slotted Kimberwick
Copper high port
with curb hooks and chain
Stainless
#255603 - 5"

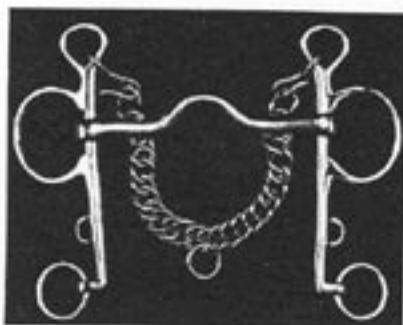
Acceptable Pelham English Bits



RUBBER MOUTH PELHAM
4½" Sliding cheeks, 5" and 5¼"



SS JOINTED MOUTH PELHAM
4½" Sliding cheeks, 5¼"



Pelham Hartwell Bit



Pelham
Stainless Steel
#212507 - 5"



Pelham Bit Converters
Attach to upper and lower rings
to a Pelham bit so it can be used
with just one rein - #414

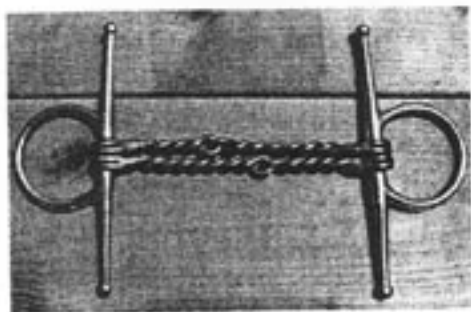


SS TWISTED MOUTH PELHAM
4" Sliding cheeks, 5¼"

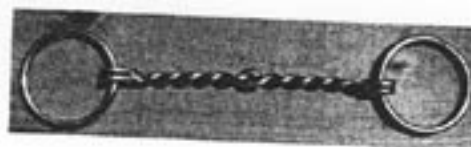
Acceptable

Not acceptable

Not acceptable English Bits



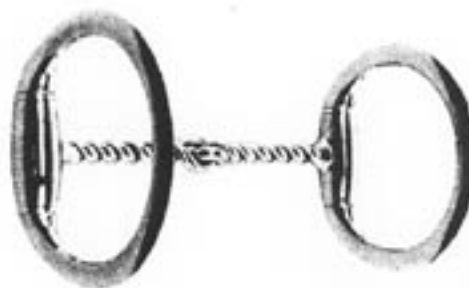
Full Cheek



Twisted Wire Braddoon



SS JOINTED MOUTH GAG
5", 5 1/4"



Twisted Wire Egg But



SS THICK MOUTH PESSOA GAG
5 1/4"



Sliding Gag Bit



Weymouth
"Tom Bass" Bit



COPPER ROLLER MOUTH



COPPER CHERRY ROLLER MOUTH

Nosebands



FIGURE 8 NOSEBANDS



FLASH NOSEBANDS

15

Martingales &



Running Martingale



Standing Martingale



English Breast Plate



English Breastplate

SPURS

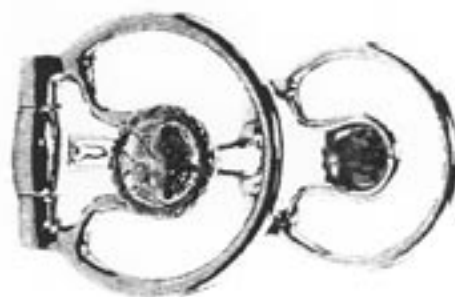


- X TOO LONG OR
- X ROUNDED
- X
- X
- X
- X
- X

Acceptable Western Snaffle Bits



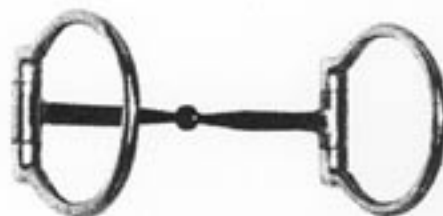
Sweet Iron Ring Bit



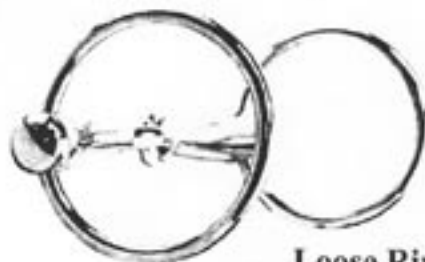
Engraved Offset Dee



Offset Dee
Stainless with copper wire



Sweet Iron Offset Dee
2 1/2" rings, 9.6 mm Sweet iron
mouth with copper inlay.



Loose Ring
21 mm mouthpiece Stainless Steel



French Link

Acceptable Western Leverage Bits



Oval Cheek Grazing



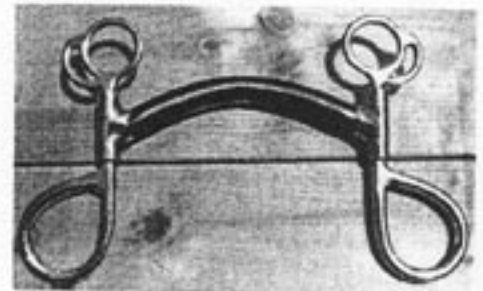
Curb Pleasure Bit



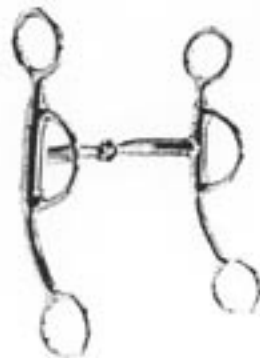
Tom Thumb Pleasure



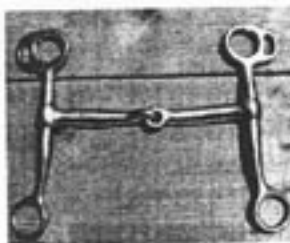
Silver Show Bit



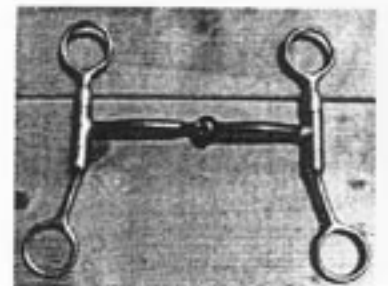
Colt Bumper Bit



Sweet Iron Snaffle

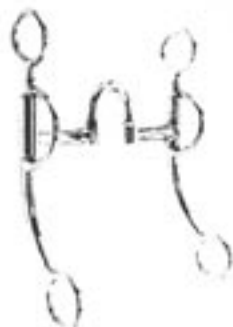


Pleasure Snaffle

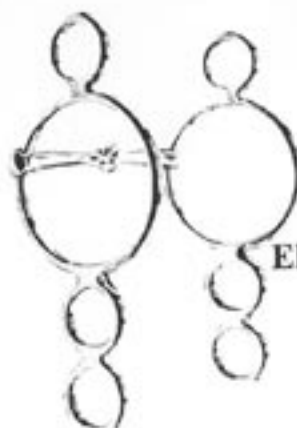


Sweet Iron Snaffle

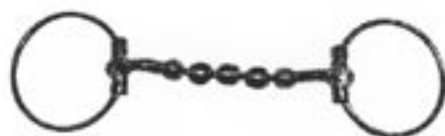
Not acceptable Western Bits



Sweet Iron Correction



Elevator Bit



ROLLER BALL SNAFFLE



Wonder Gag



Wonder Gag