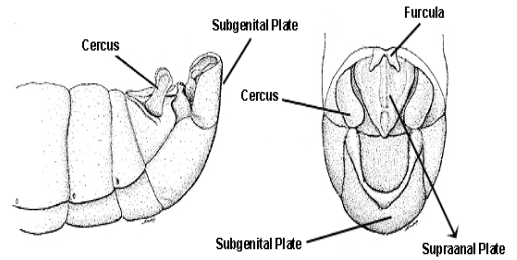


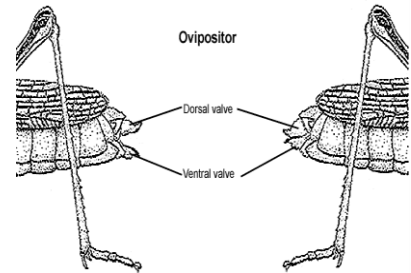
# Cheat Sheet for Grasshopper ID



## Male



## Female



## Two Stripe



- Spur throat
- Stripes go to the tail (end of the wings)
- Province wide
- Careful on the size- there is wide size range

## Bruners



- Spur throat
- Also 747 windows (but less obvious)
- Long straight furcula
- Northern central Alberta and Peace
- Photo courtesy of Dan Johnson

## Packards



- Spur throat
- Stripes on shoulder (pronotum)
- Small backwards hooked furcula (male only)
- Mostly in southern and central Alberta

## Red Legged



- Spur throat
- Don't rely on leg color
- Bulbus abdomen (male)
- More northern usually
- Northern Alberta
- Spur-throated
- Photo courtesy of Dan Johnson

## Lesser Migratory

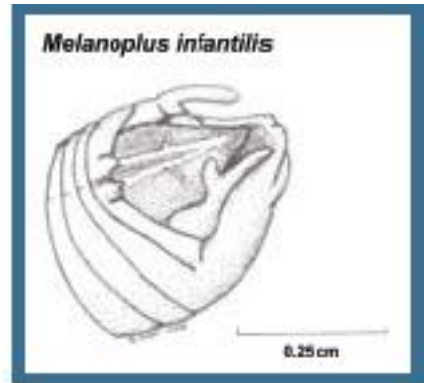
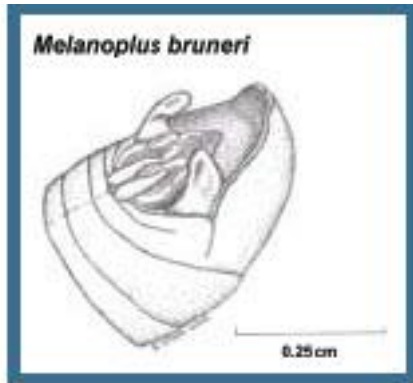
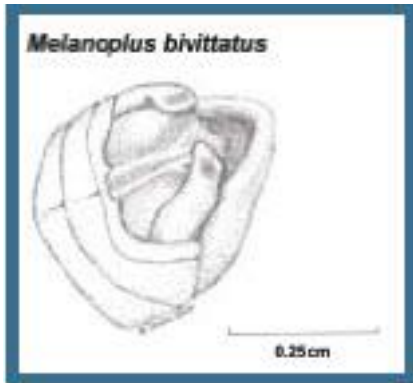


- Spur throat
- 747 windows
- Southern and central Alberta
- Small "devils horn" furcula (male only)
- Spur-throated
- Photo courtesy of Dan Johnson

## Clear winged



- No spur throat
- Difficult to catch (even in sweep net)
- Blotches on wings
- Photo courtesy Shelley Barkley



Grasshopper Identification & Control Methods  
Agriculture and Agri-Food Canada



**Two Stripe**



**Lesser Migratory**



**Bruners**



**Packards**