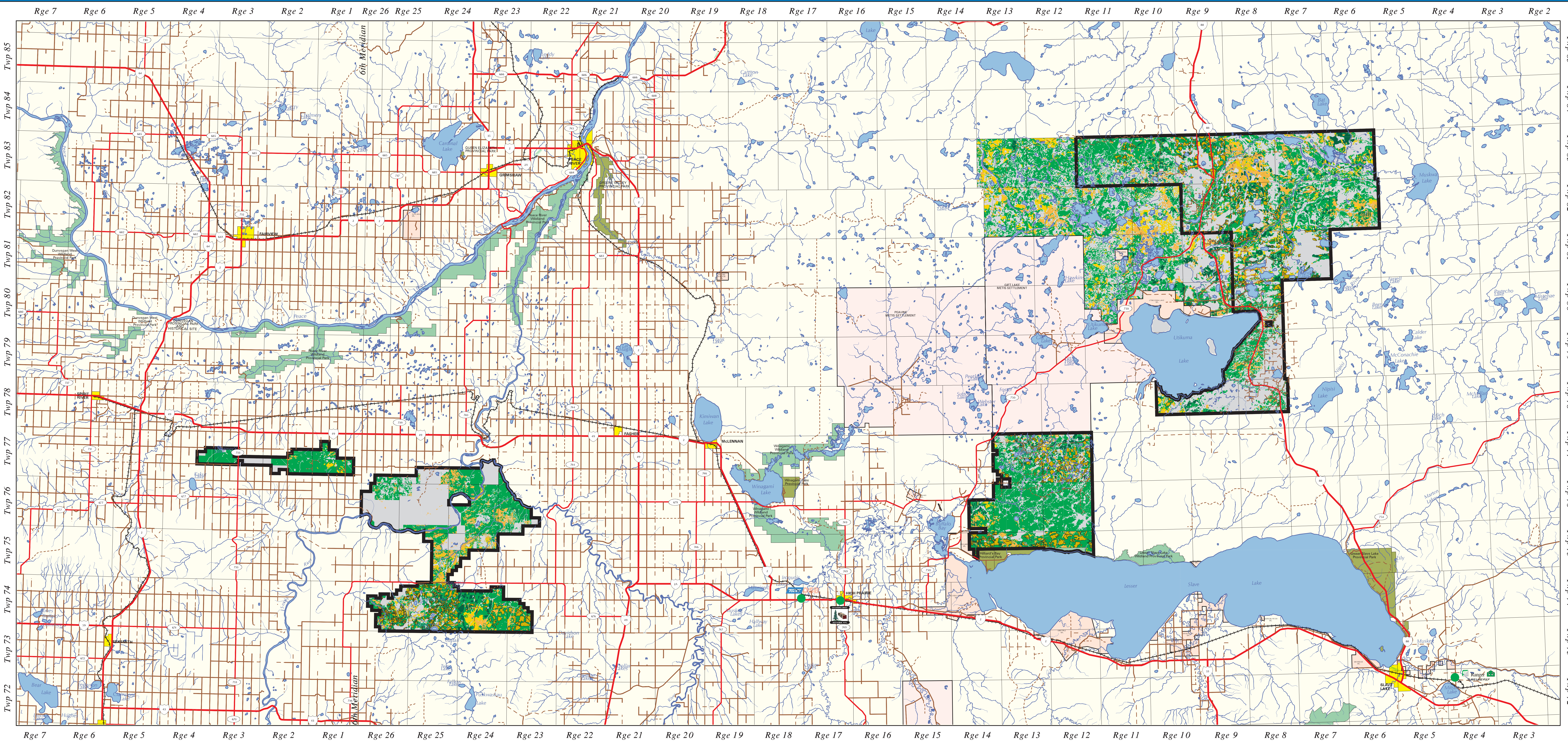
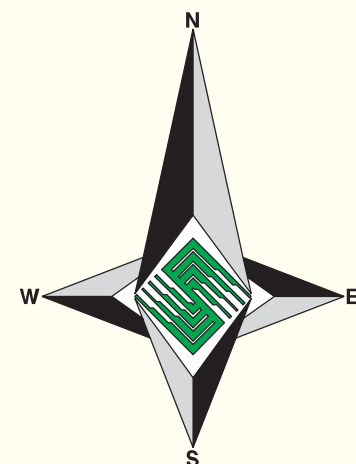


20 YEAR HARVEST SEQUENCE

OPERATING AREA: FMA



OPERATING AREA

- Compartment Boundary
- Operating Area Name
- Compartment Number

BIRCH 6

UTIKUMA

SALT

WHITEMUD

PROVINCIAL INDEX

PLANIMETRIC LEGEND

	PRIMARY HIGHWAY		LAKE/RIVER
	DIVIDED PAVED GRAVEL		CITY/TOWN
	SECONDARY ROAD PAVED GRAVEL		PROVINCIAL PARK
	IMPROVED ROAD UNIMPROVED ROAD		WILDLAND PROVINCIAL PARK
	TRUCK TRAIL		METIS SETTLEMENTS
	RAILWAY		FIRST NATIONS RESERVES
	RUNWAY		MILL SITE
	TOWNSHIP LINE		
	FMA BOUNDARY		
	STREAM		

HARVEST SIMULATION PARAMETERS

FMS No: 112
 Landbase: Single
 Harvest Unit: FMA
 Flow Constraint: Dual Even Flow
 Regen. Strategy: Fully Stocked
 Planning Horizon (yrs): 160
 Compartment Sequencing: OFF
 20 Year Harvest Patch Size Mitigation: ON
 Planned Blocks: Sequenced
 Late Seral Stage Retention: Included

STANDS SCHEDULED FOR HARVEST

- Years 1-10
- Years 11-20

LANDBASE CATEGORIES

- Planned Blocks
- Net Landbase Not Selected For Harvest
- Cutblocks
- Net Landbase Deletions

(Please Note: some planned blocks are not sequenced in the first 30 years for they are being retained as late seral stages)

Data is our core business™

Map Version 1.00
 Map Date: January 27, 2005
 Original Map Scale: 1:250000
 PMS File: 001_112_Land
 Map Production: Silvacom Ltd.
 Silvacom Reference: 1-001
 Map File: 2-010maps/tp_cut_map.aml