

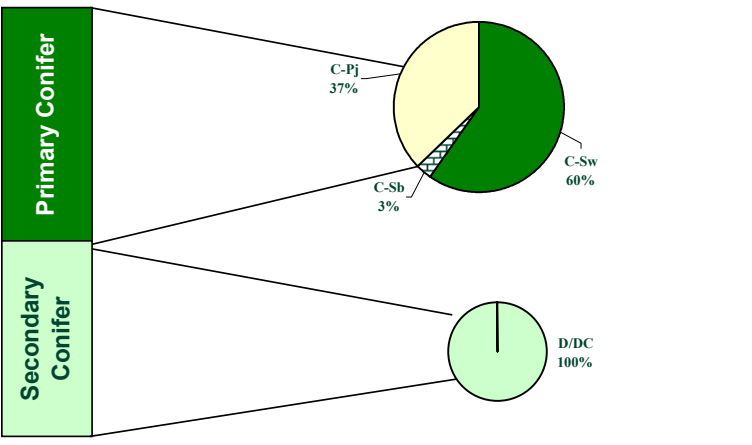
# The Alberta-Pacific FMA Area Timber Supply Analysis

## FMU S22



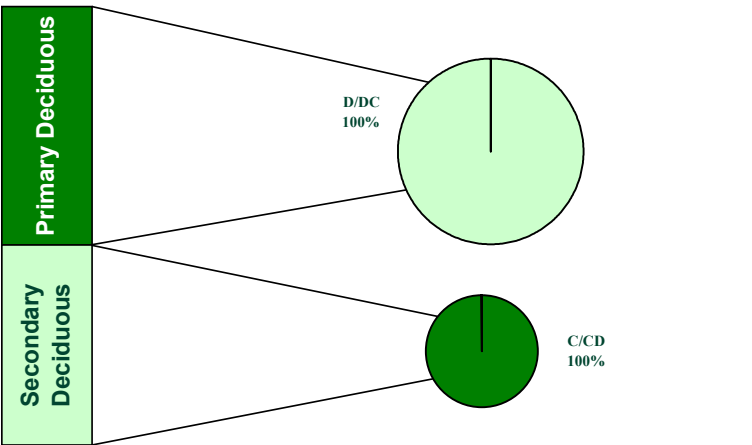
Summary Category (60-Year Average)	Prim Coniferous	Prim Deciduous	Total
Net Harvestable Landbase (ha)	-	-	278,615
LRSY (m³/yr)	183,926	424,654	608,580
Woodstock™ Aspatial AAC (m³/yr)	94,866	357,945	452,812
Stanley Spatial AAC - (m³/yr)	91,768	355,681	447,450
Stand Retention Deduction	0%	5%	-
Cull Deduction	2%	4%	-

### Woodstock/Stanley Spatial Coniferous Harvest Summary by Cover Type: 60-Year Average



Primary Coniferous Average Harvest	
Cover Group	m³/yr
C-Sw	54,782
C-Sb	2,790
C-Pj	34,196
<b>Total</b>	<b>91,768</b>
Incidental Coniferous Average Harvest	
Cover Group	m³/yr
D/DC	90,240
<b>Total</b>	<b>90,240</b>
<b>Total Conifer Harvest</b>	<b>182,008</b>

### Woodstock/Stanley Spatial Deciduous Harvest Summary by Cover Type: 60-Year Average



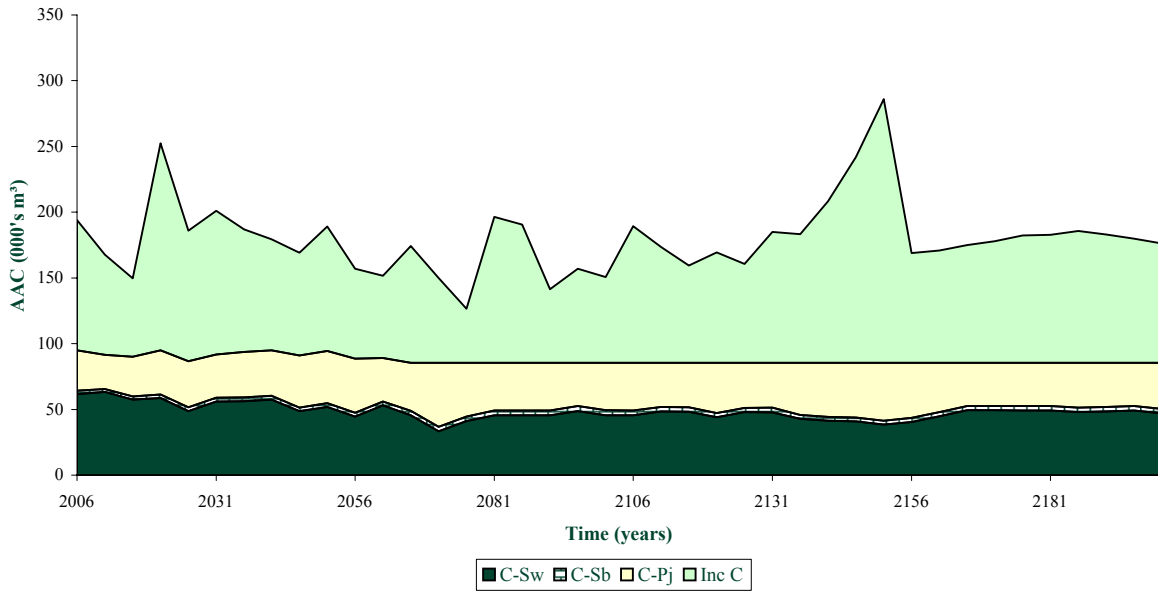
Primary Deciduous Average Harvest	
Cover Group	m³/yr
D/DC	355,681
<b>Total</b>	<b>355,681</b>
Incidental Deciduous Average Harvest	
Cover Group	m³/yr
C/CD	21,040
<b>Total</b>	<b>21,040</b>
<b>Total Deciduous Harvest</b>	<b>376,722</b>

# The Alberta-Pacific FMA Area Timber Supply Analysis

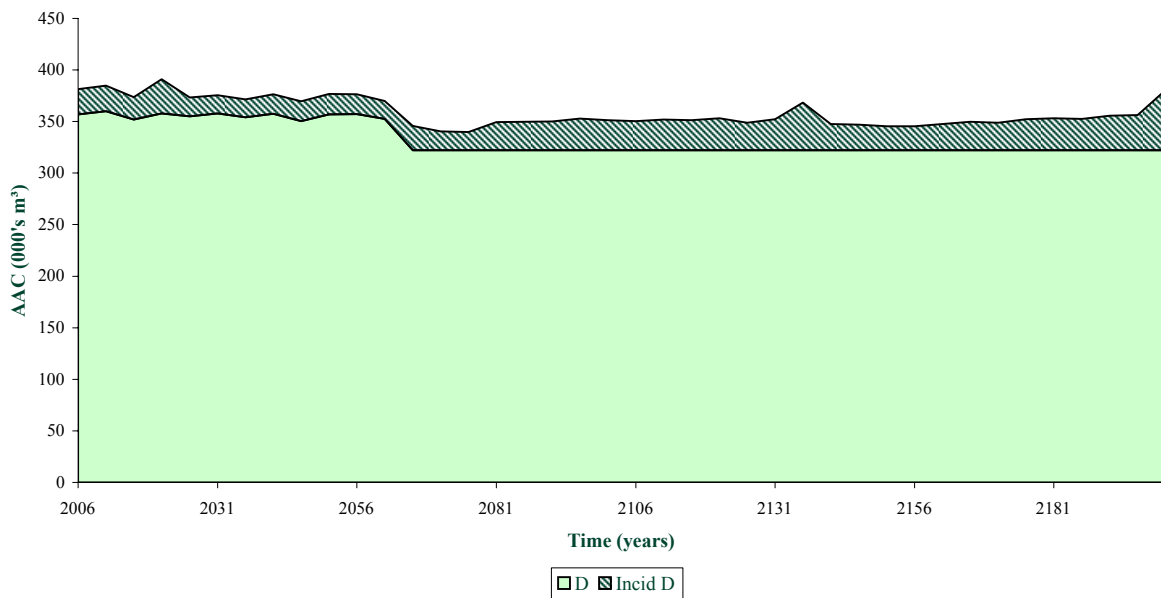
## FMU S22



### FMA and Non FMA Coniferous AAC by Cover Type



### FMA and Non-FMA Deciduous AAC by Cover Type

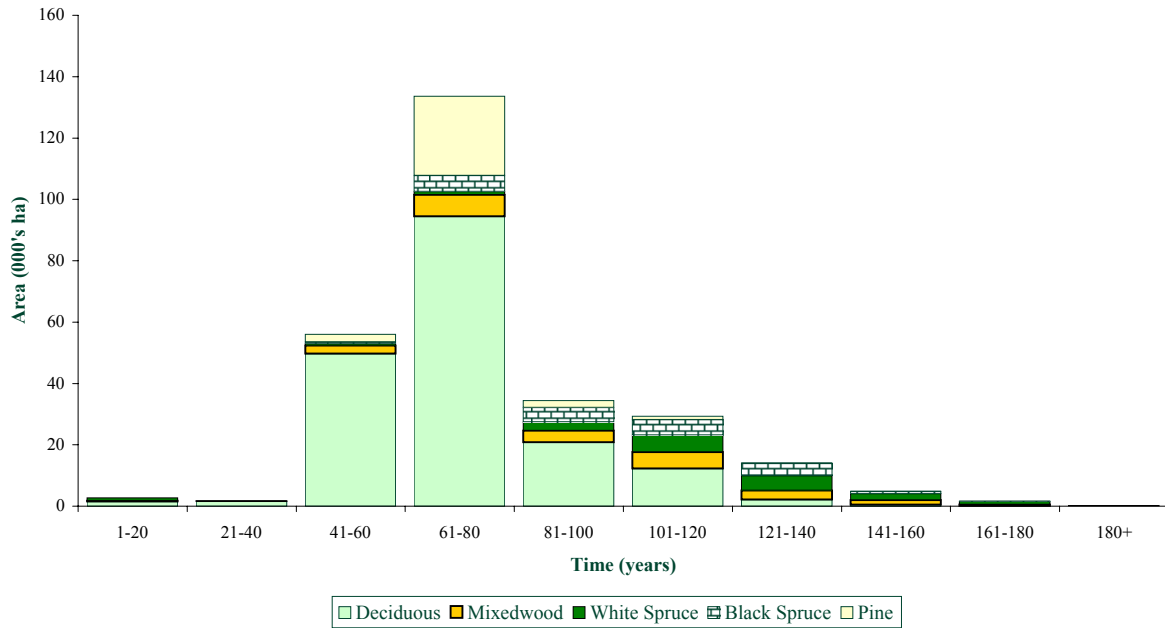


# The Alberta-Pacific FMA Area Timber Supply Analysis

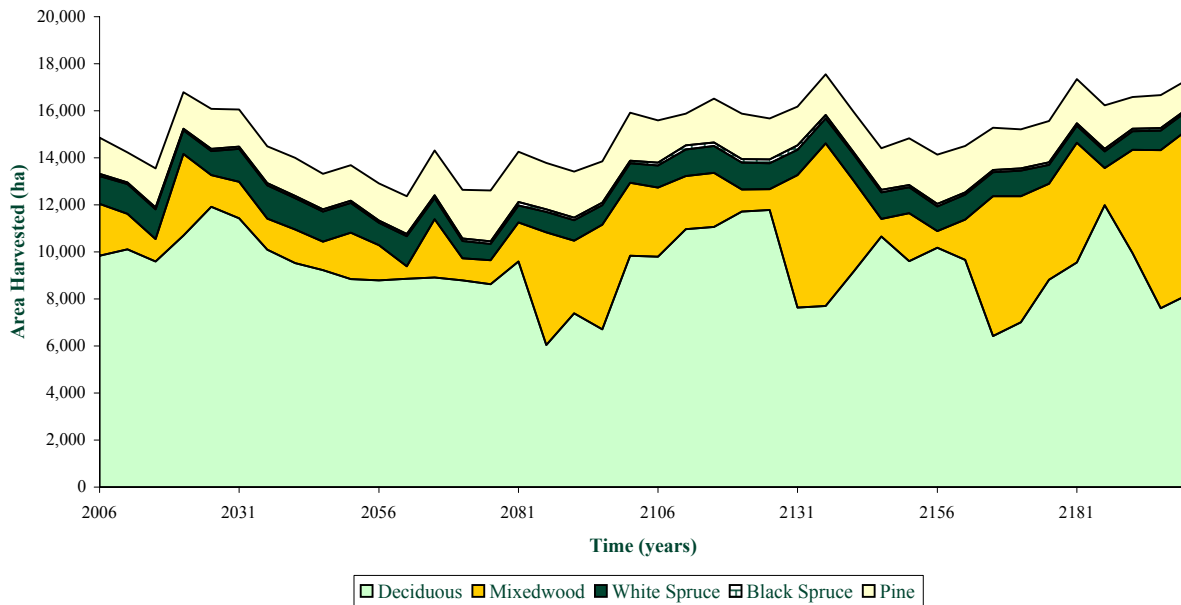
## FMU S22



### Initial Ageclass Structure by Cover Type



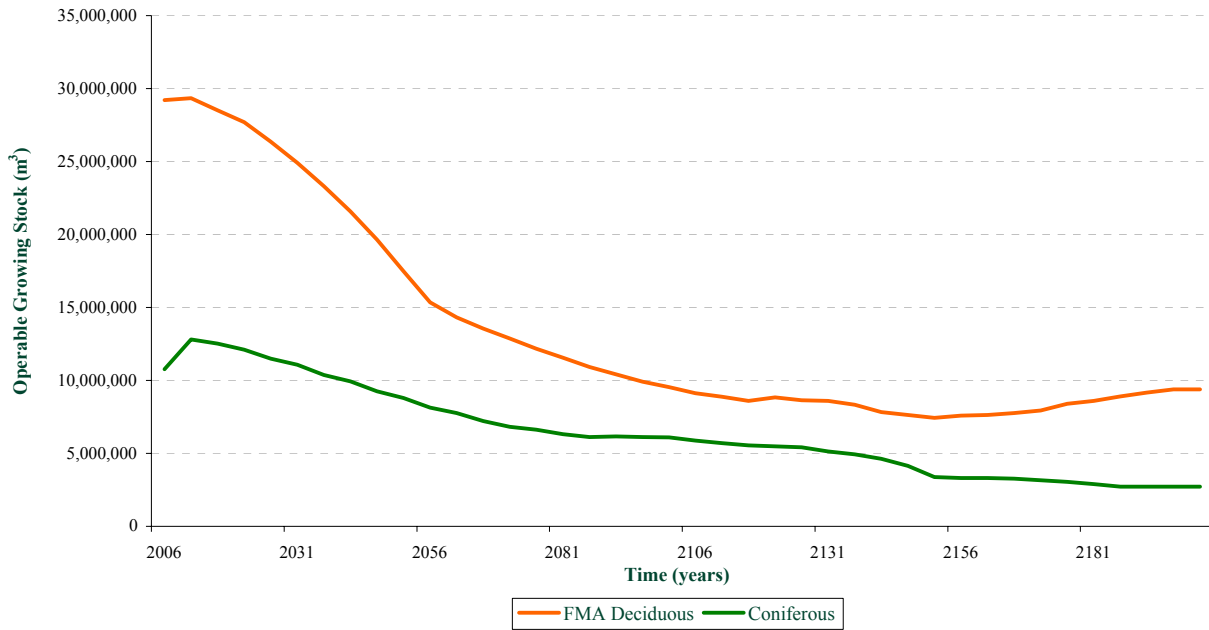
### Area Harvested by Cover Type



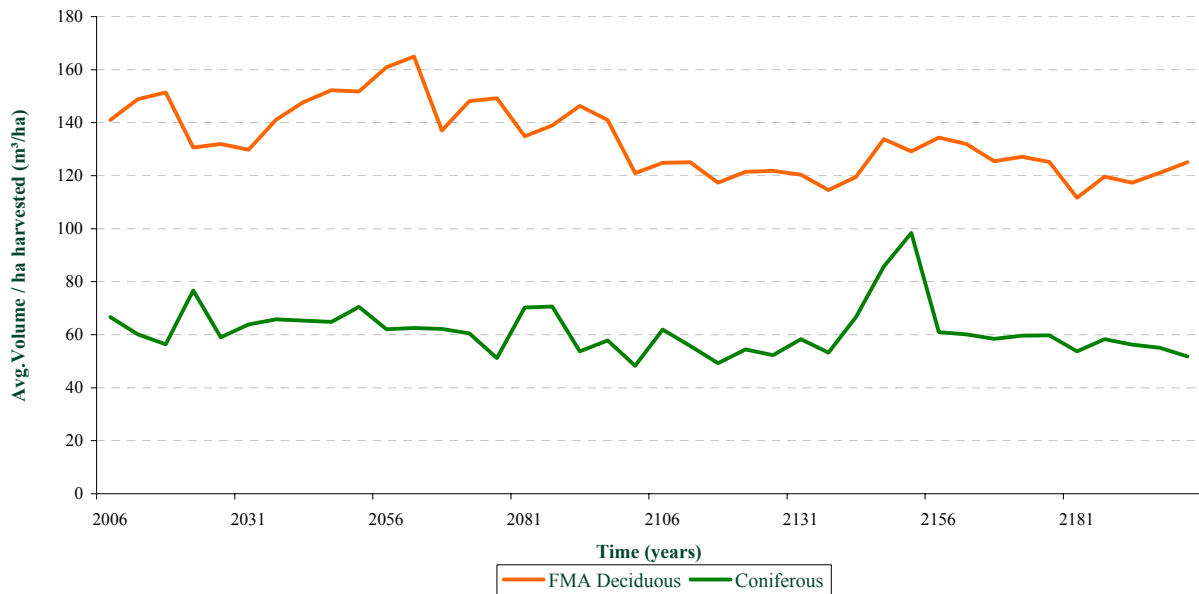
# The Alberta-Pacific FMA Area Timber Supply Analysis FMU S22



## Growing Stock Over Time



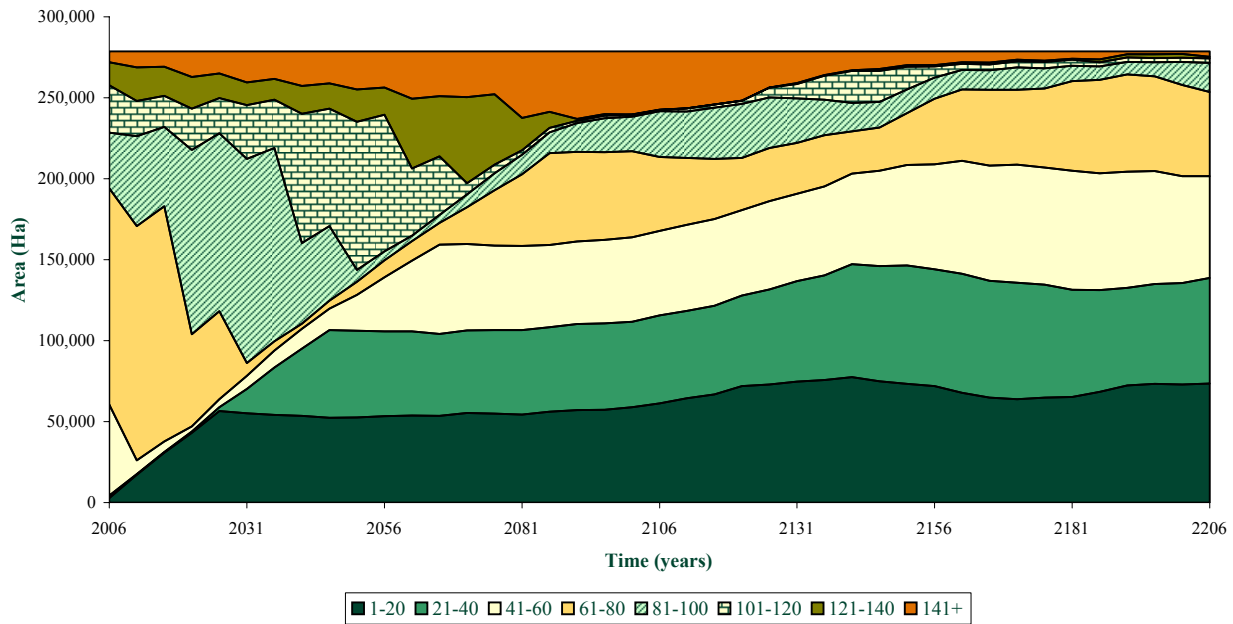
## Average Volume Per Ha Harvested Over Time



# The Alberta-Pacific FMA Area Timber Supply Analysis FMU S22



## Age Class Distribution



## Average Harvest Ages Over Time

Species Group	Now	+ 50 Years	+ 100 Years	+ 150 Years	+ 200 Years
Deciduous	100	119	70	113	76
Deciduous/Coniferous	121	110	88	101	62
Coniferous/Deciduous	132	146	105	90	83
White Spruce	134	163	83	90	88
Black Spruce	129	127	165	123	121
Pine	80	117	83	82	94