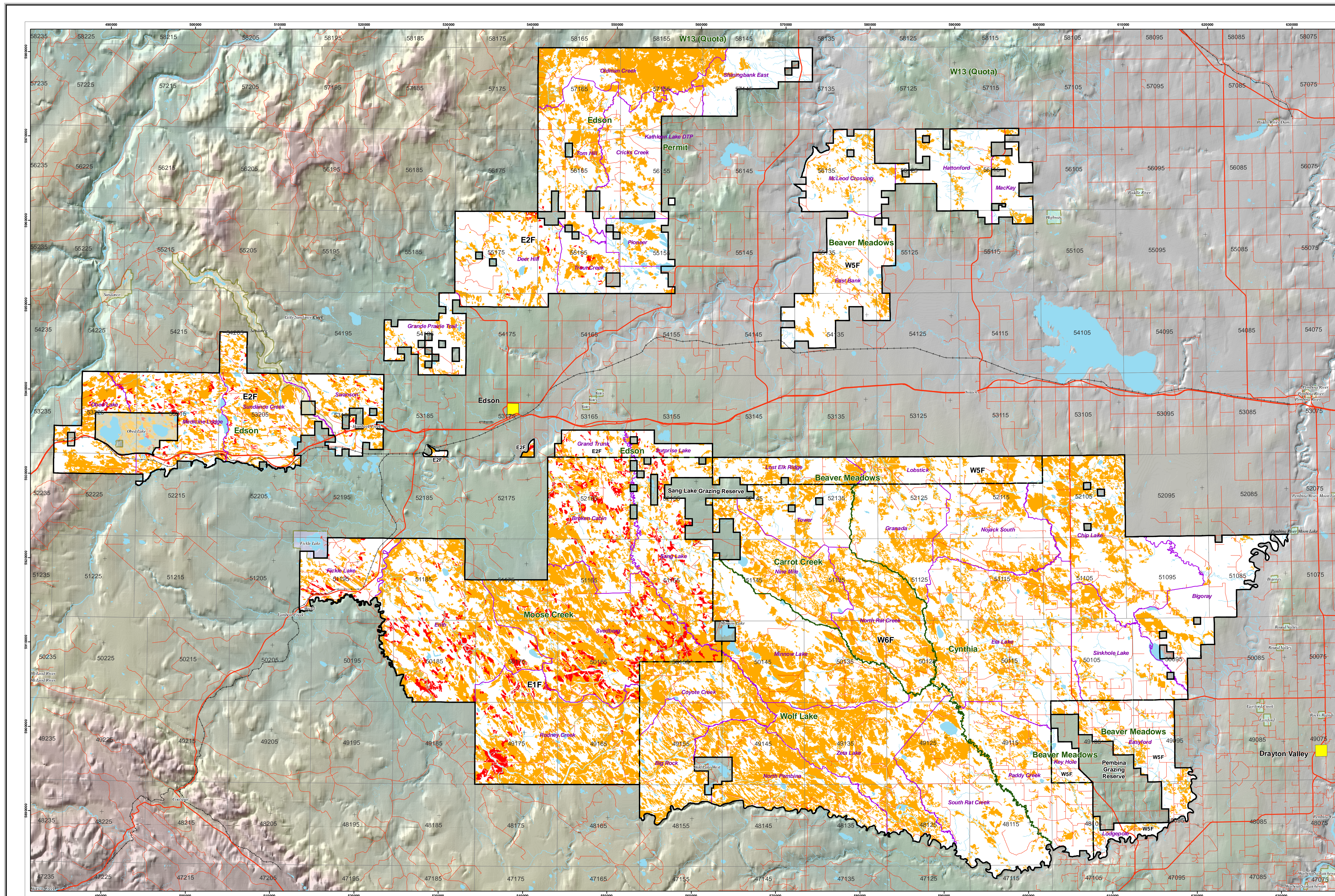


# MPB Susceptibility Rating



**FMU E1, E2, W5, W6**



**Weyerhaeuser  
Edson**

**MPB  
Susceptibility Rating**

**Legend**

**Base Features**

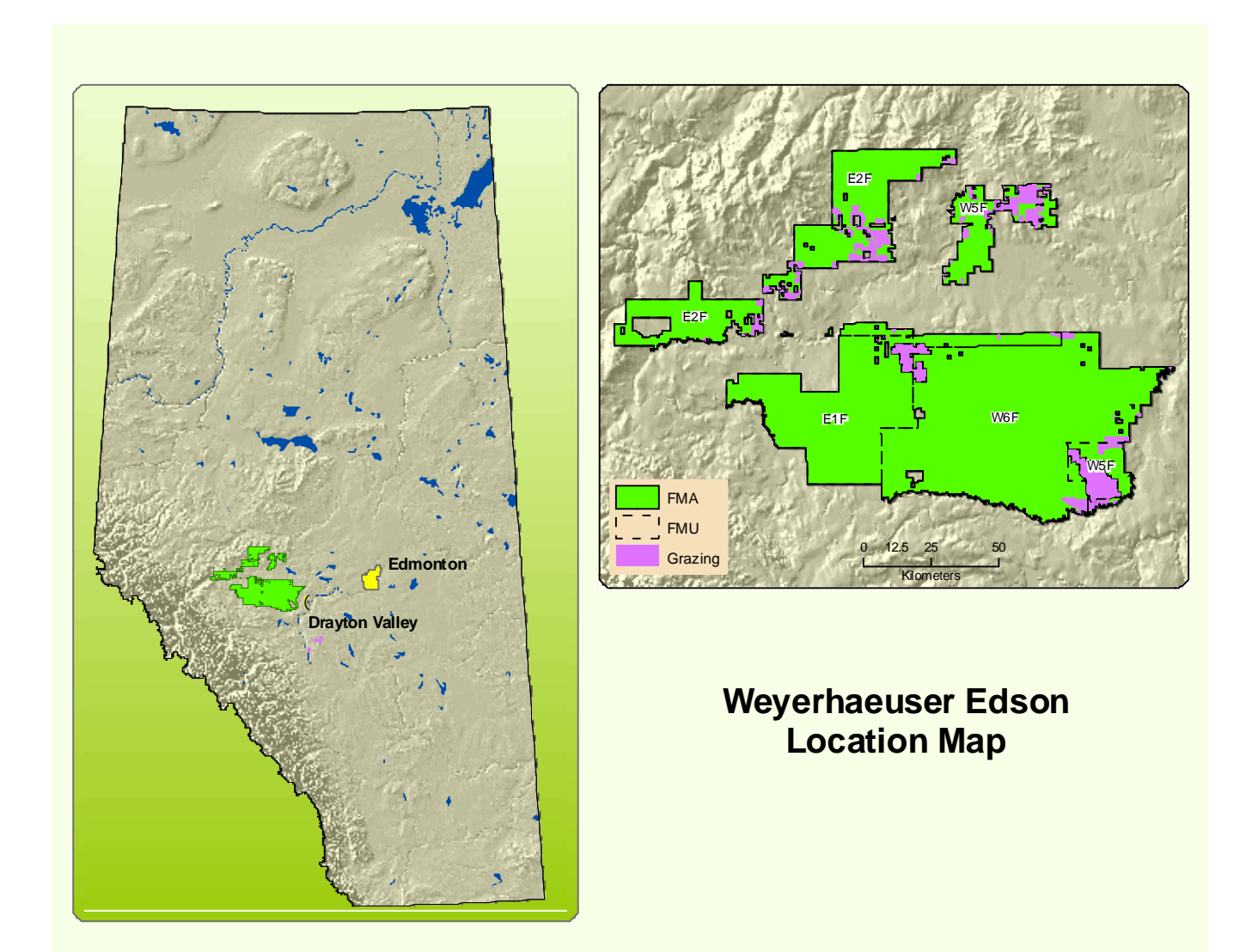
- FMA Boundary
- LMU Boundary
- Harvest Design Area
- Roads / Access
- Railway
- ATS
- Grazing Reserves
- Sang Lake & Pembina
- Communities
- Lakes / Rivers
- Streams

**Protected Areas**

- PP - Provincial Park
- PRA - Provincial Recreation Area
- NA - Natural Area

**MPB Susceptibility**


- Rank 1
- Rank 2



North Arrow

1:150,000 @ 50" X 28"  
1:350,000 @ 22" X 12"

Projection: UTM Zone 11 - Datum: NAD83 (CSRS)



**Timberline**  
Natural Resource Group

Timberline Natural Resource Group  
Resource Analysis Department  
Edmonton, Alberta  
February 29, 2008