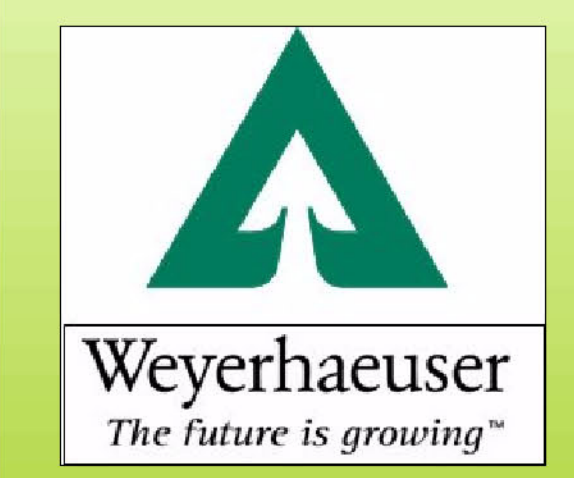


Historical Cutovers

FMU E1, E2, W5, W6



Weyerhaeuser
Edson

Historical Cutovers

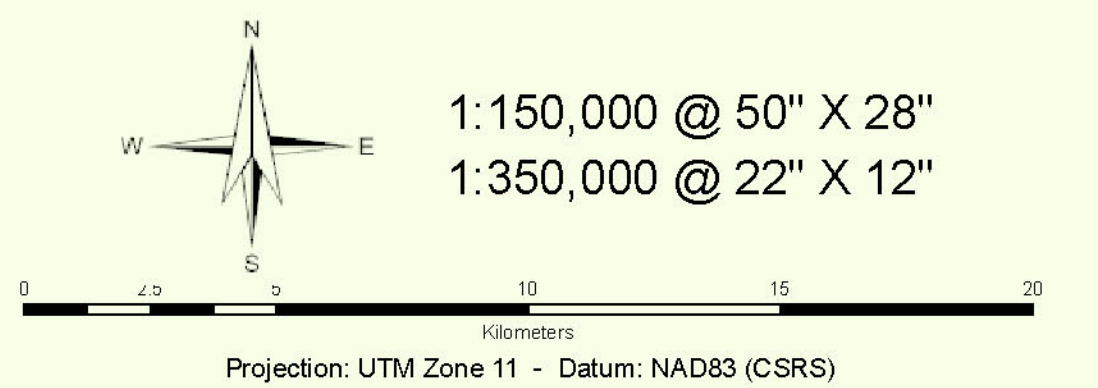
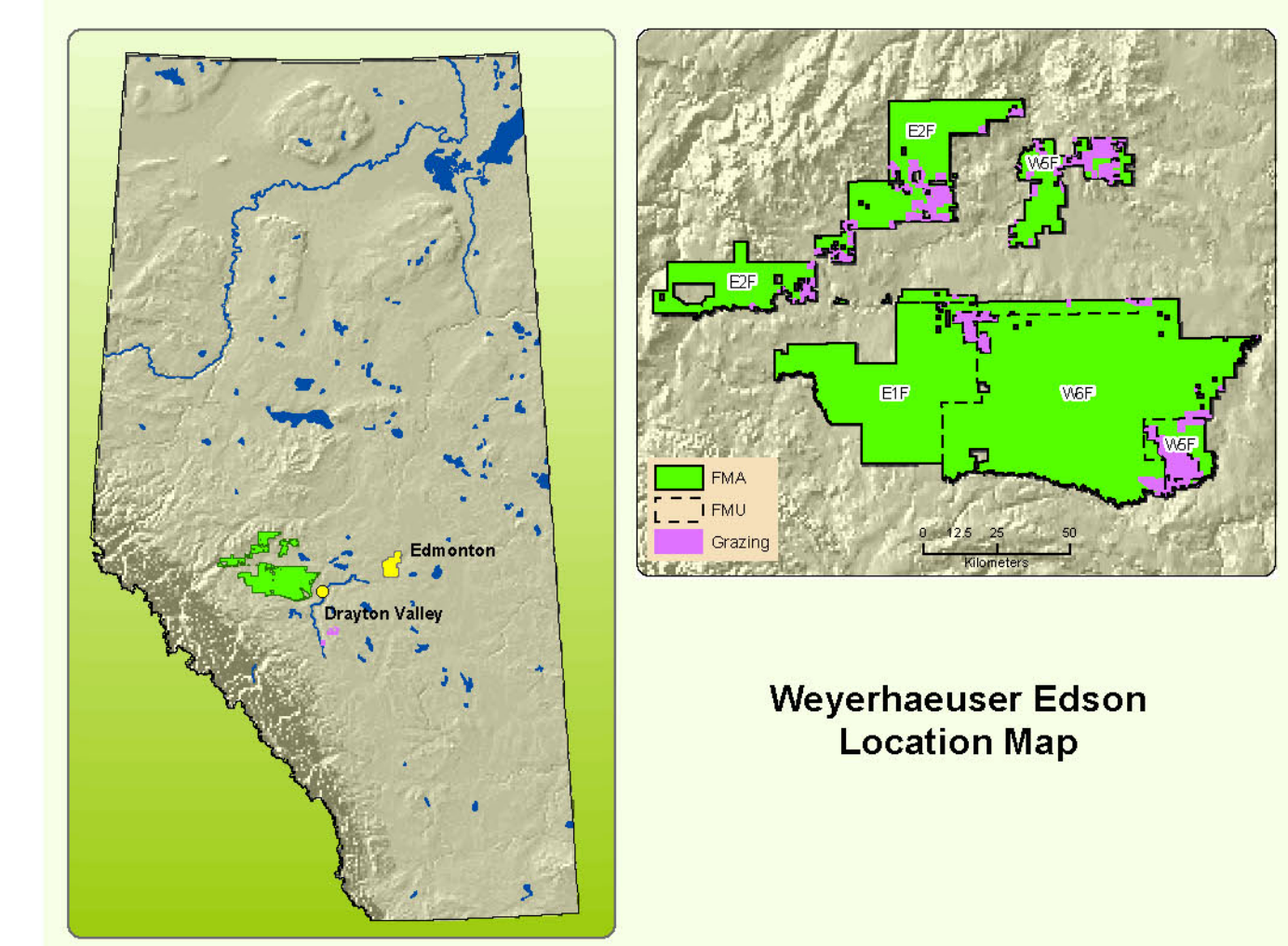
Legend

Base Features

- FMA Boundary
- LMU Boundary
- Harvest Design Area
- Roads / Access
- Railway
- ATS
- Grazing Reserves
- Sang Lake & Pembina
- Communities
- Lakes / Rivers
- Streams
- PP - Provincial Park
- PRA - Provincial Recreation Area
- NA - Natural Area

Cutblocks - Cut Year

- 1996 - 2000
- 1991 - 1995
- 1986 - 1990
- Before 1986



Timberline Forest Inventory Consultants
Resource Analysis Department
Edmonton, Alberta
November 15, 2005

AcMap Project: Edm-pdr\FI\Inventory\edmap\portofillmap\Historical_Cutovers.mxd; C:\hp

