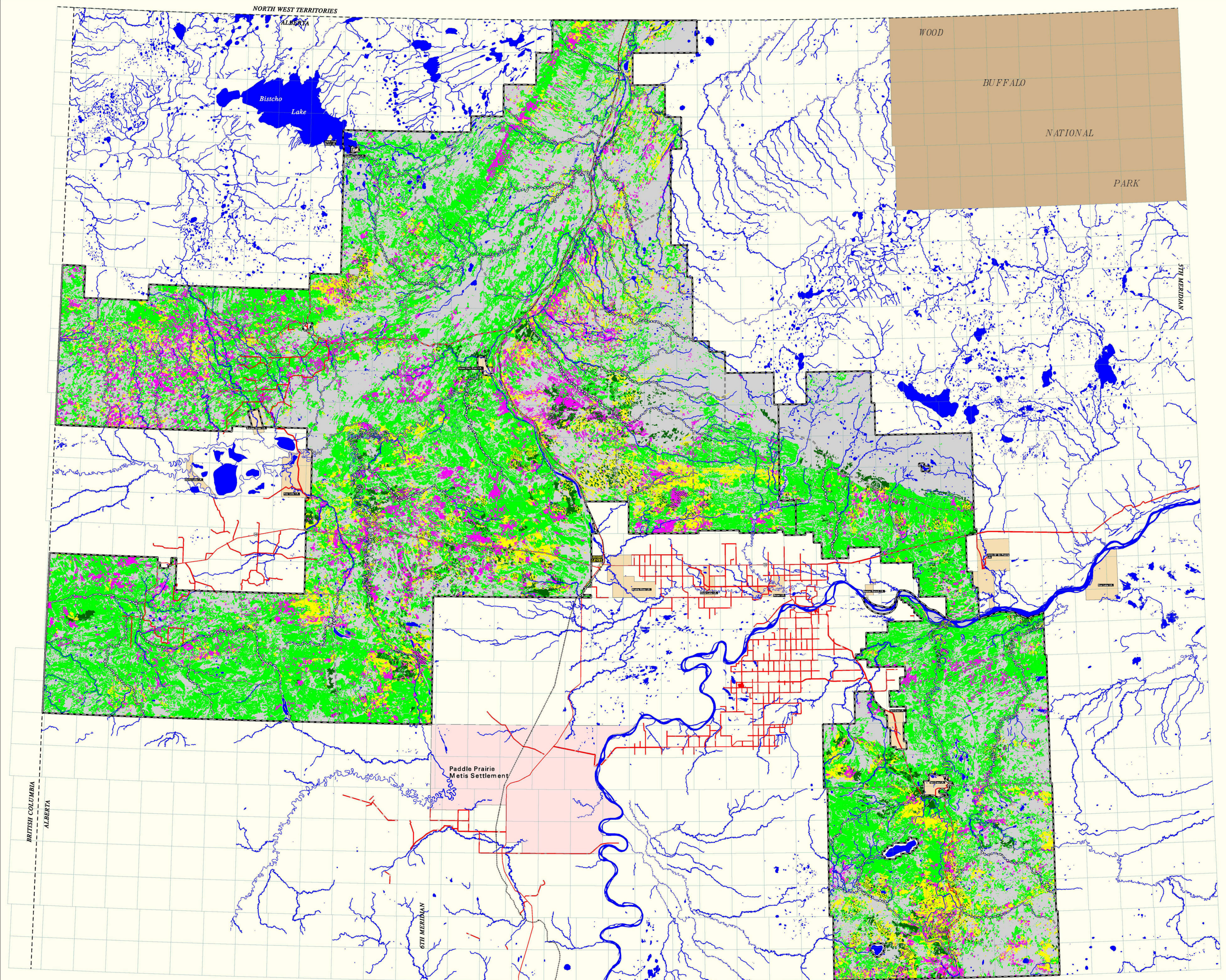


Rge 12 Rge 11 Rge 10 Rge 9 Rge 8 Rge 7 Rge 6 Rge 5 Rge 4 Rge 3 Rge 2 Rge 1 Rge 23 Rge 22 Rge 21 Rge 20 Rge 19 Rge 18 Rge 17 Rge 16 Rge 15 Rge 14 Rge 13 Rge 12 Rge 11 Rge 10 Rge 9 Rge 8 Rge 7 Rge 6 Rge 5 Rge 4 Rge 3 Rge 2 Rge 1



Rge 13 Rge 12 Rge 11 Rge 10 Rge 9 Rge 8 Rge 7 Rge 6 Rge 5 Rge 4 Rge 3 Rge 2 Rge 1 Rge 25 Rge 24 Rge 23 Rge 22 Rge 21 Rge 20 Rge 19 Rge 18 Rge 17 Rge 16 Rge 15 Rge 14 Rge 13 Rge 12 Rge 11 Rge 10 Rge 9 Rge 8 Rge 7 Rge 6 Rge 5 Rge 4 Rge 3 Rge 2 Rge 1

<p><b>PROVINCIAL INDEX</b></p>	<p><b>OPERATING AREA INDEX</b></p>	<p><b>NATURAL SUB-REGIONS</b></p>	<p><b>PLANIMETRIC LEGEND</b></p> <ul style="list-style-type: none"> <li>Divided Highway</li> <li>Four Lane Highway</li> <li>Two Lane Highway</li> <li>High Grade Gravel</li> <li>Low Grade Gravel</li> <li>Railroad</li> <li>Indian Reserve</li> <li>Metis Settlement</li> </ul>	<p><b>STANDS SCHEDULED FOR HARVEST</b></p> <ul style="list-style-type: none"> <li>Years 1-10</li> <li>Years 11-20</li> </ul> <p><b>LANDBASE CATEGORIES</b></p> <ul style="list-style-type: none"> <li>Net Landbase Not Selected For Harvest</li> <li>Cutblocks</li> <li>Net Landbase Deletions</li> </ul>	<p><b>HARVEST SIMULATION PARAMETERS</b></p> <p>Run No: 5f Landbase: Single Harvest Unit: FMA Flow Constraint: Dual Even Flow Regen. Strategy: Status Quo Planning Horizon (yrs): 200 Compartment Sequencing: OFF Adjacency: OFF Conifer AAC: 1,775,000 m<sup>3</sup>/yr Deciduous AAC: 1,921,000 m<sup>3</sup>/yr</p>	<p>Map version: 1.00 Map date: May 26, 2002 Original map scale: 300000 Run file: apr02_nls_run10.dat Map projection: Spheroid UTM Zone: 12N Map file: N:\GIS\maps\h_cut_map.mxd</p>
--------------------------------	------------------------------------	-----------------------------------	--	---	---	---