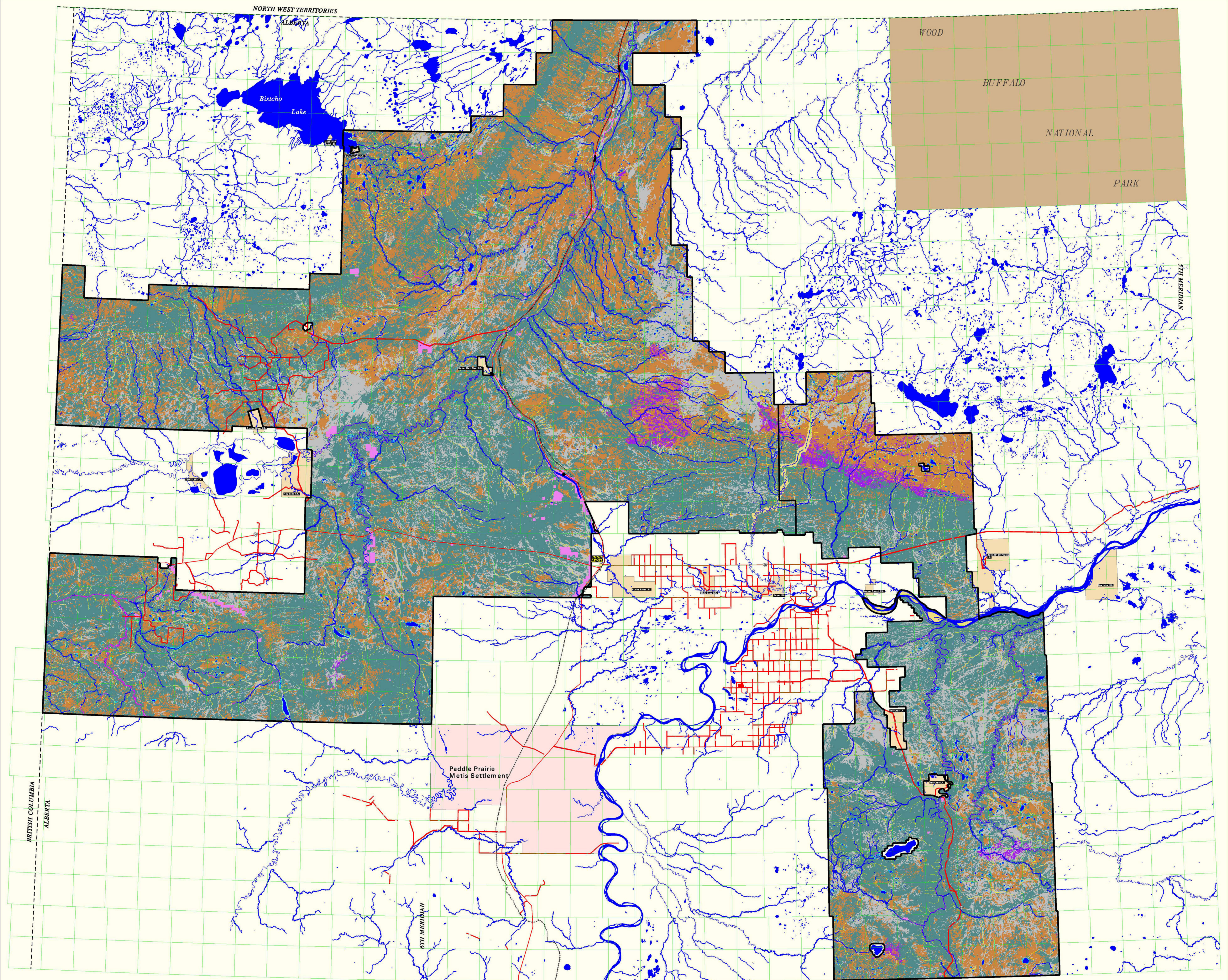


Rge 12 Rge 11 Rge 10 Rge 9 Rge 8 Rge 7 Rge 6 Rge 5 Rge 4 Rge 3 Rge 2 Rge 1 Rge 23 Rge 22 Rge 21 Rge 20 Rge 19 Rge 18 Rge 17 Rge 16 Rge 15 Rge 14 Rge 13 Rge 12 Rge 11 Rge 10 Rge 9 Rge 8 Rge 7 Rge 6 Rge 5 Rge 4 Rge 3 Rge 2 Rge 1



Rge 13 Rge 12 Rge 11 Rge 10 Rge 9 Rge 8 Rge 7 Rge 6 Rge 5 Rge 4 Rge 3 Rge 2 Rge 1 Rge 25 Rge 24 Rge 23 Rge 22 Rge 21 Rge 20 Rge 19 Rge 18 Rge 17 Rge 16 Rge 15 Rge 14 Rge 13 Rge 12 Rge 11 Rge 10 Rge 9 Rge 8 Rge 7 Rge 6 Rge 5 Rge 4 Rge 3 Rge 2 Rge 1

PROVINCIAL INDEX

OLD FOREST MANAGEMENT UNITS

NATURAL SUB-REGIONS

PLANIMETRIC LEGEND

- Divided Highway
- Four Lane Highway
- Two Lane Highway
- High Grade Gravel
- Low Grade Gravel
- Railroad
- Indian Reserve
- Metis Settlement

LANDBASE CATEGORIES

WATER	STREAM BUFFERS (30m)
LANDUSE DISPOSITIONS (PMT, REC, DRB)	NATURALLY NON-FORESTED
INOPERABLE	ANTHROPOGENIC NON-FORESTED
TRUMPETER SWAN (200m)	NON-MERCHANTABLE
LAKE BUFFERS (100m)	POTENTIALLY PRODUCTIVE
RIVER BUFFERS (80m)	NET PRODUCTIVE AREA

* All non-burned cutblocks remain in the net productive landbase.