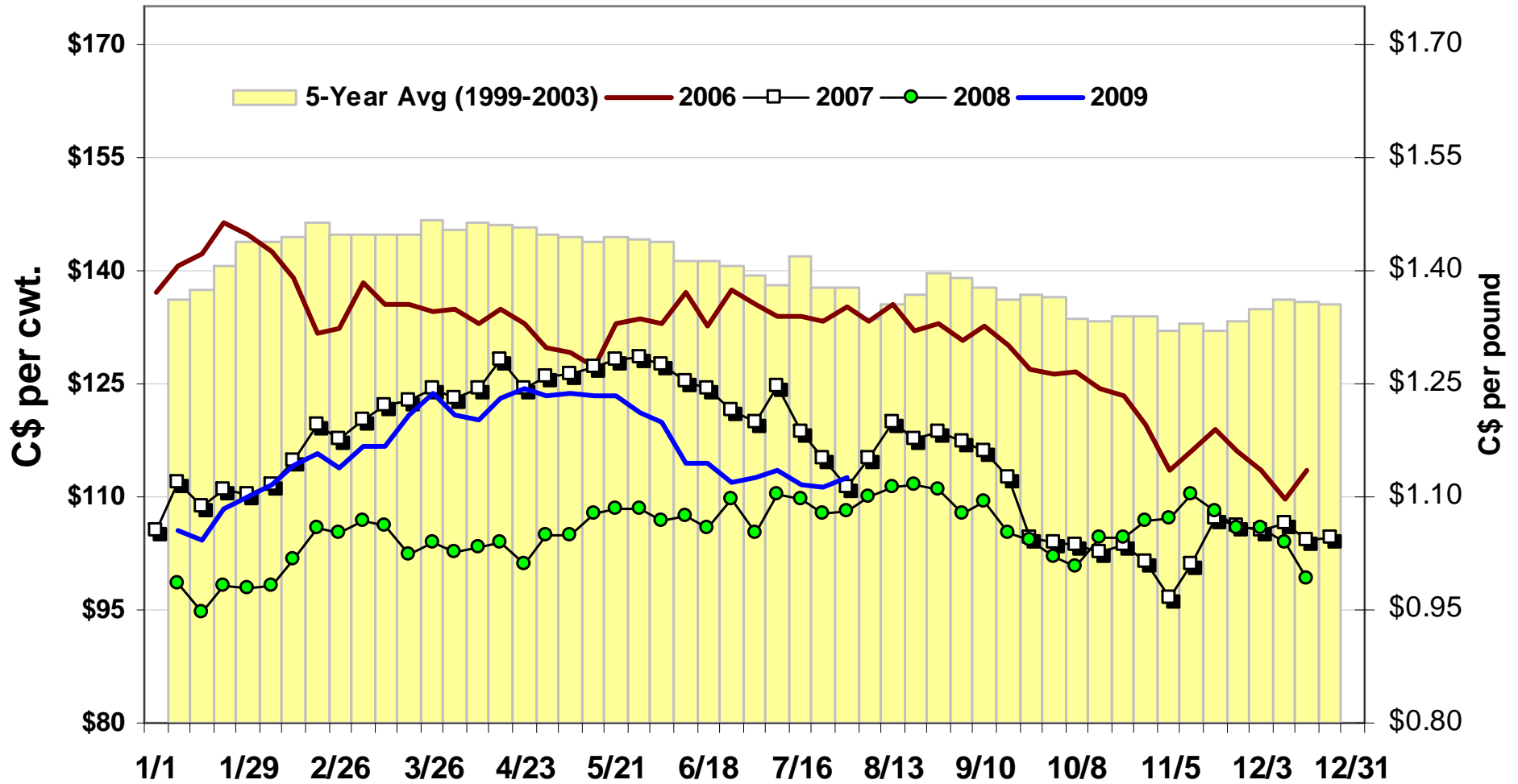


Cattle Chart Book

August 2009

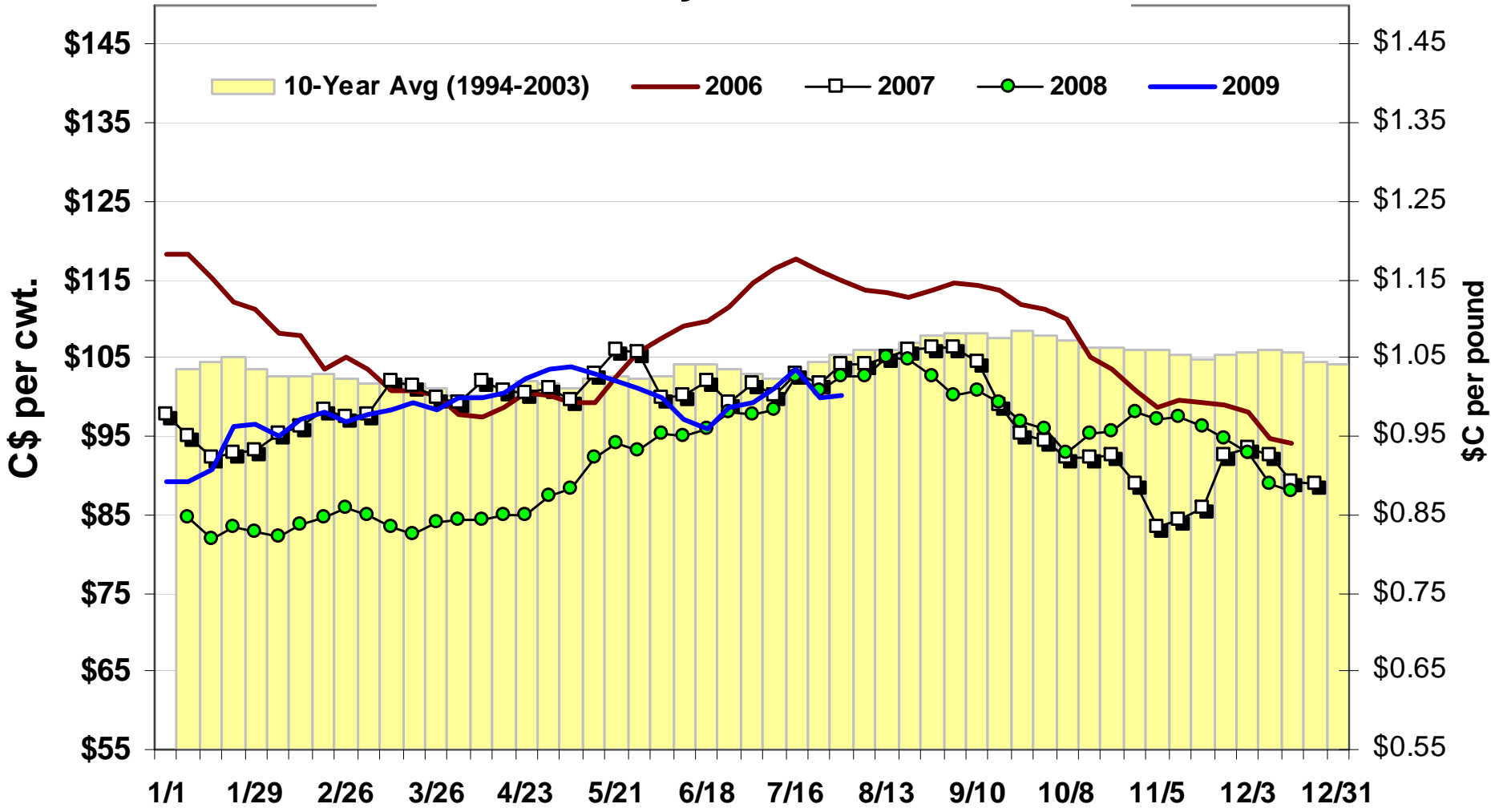
Alberta Agriculture and Rural Development
Provincial Livestock Market Analyst
Clinton Dobson
clinton.dobson@gov.ab.ca
(780) 422-1921

Northern Alberta 5-600 lb. Feeders Weekly Steer Price



Source: Canfax (ave. of midpoint of the range); Economics & Competitiveness Division,

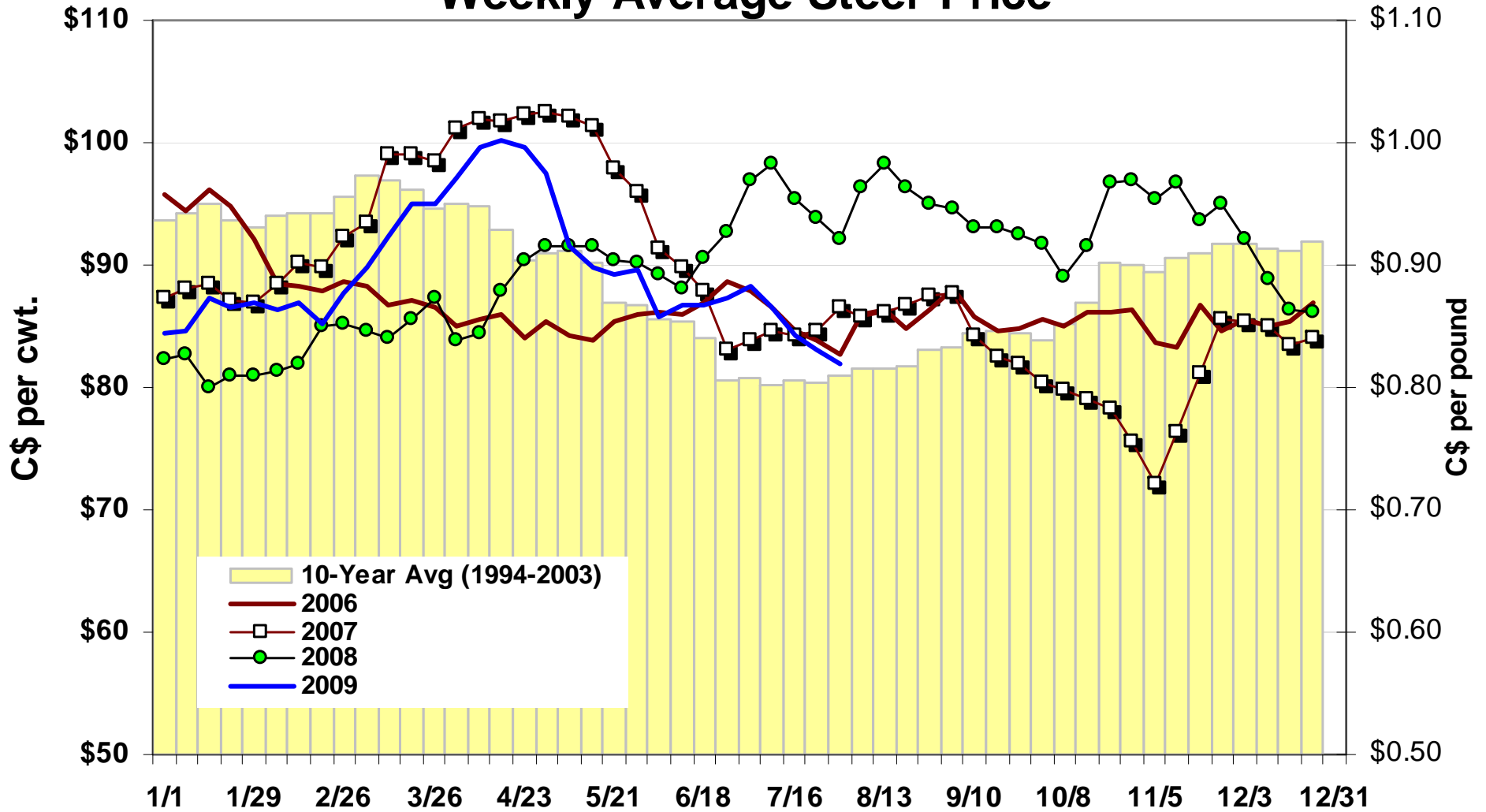
Central Alberta 8-900 lb. Feeders Weekly Steer Price



Source: Canfax (ave. of midpoint of the range); Economics & Competitiveness Division,

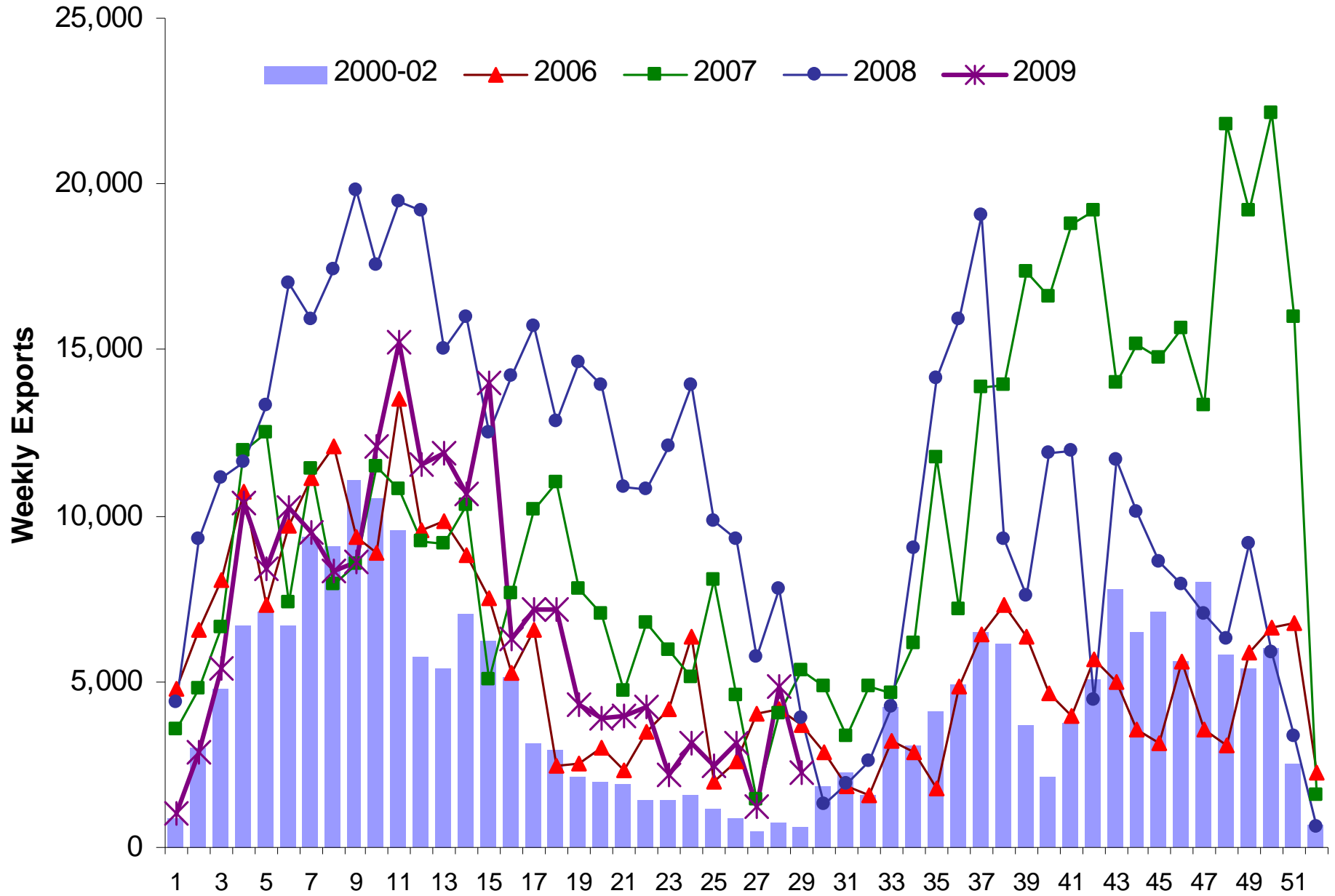
Alberta Fed Cattle - Direct Cash Sales

Weekly Average Steer Price



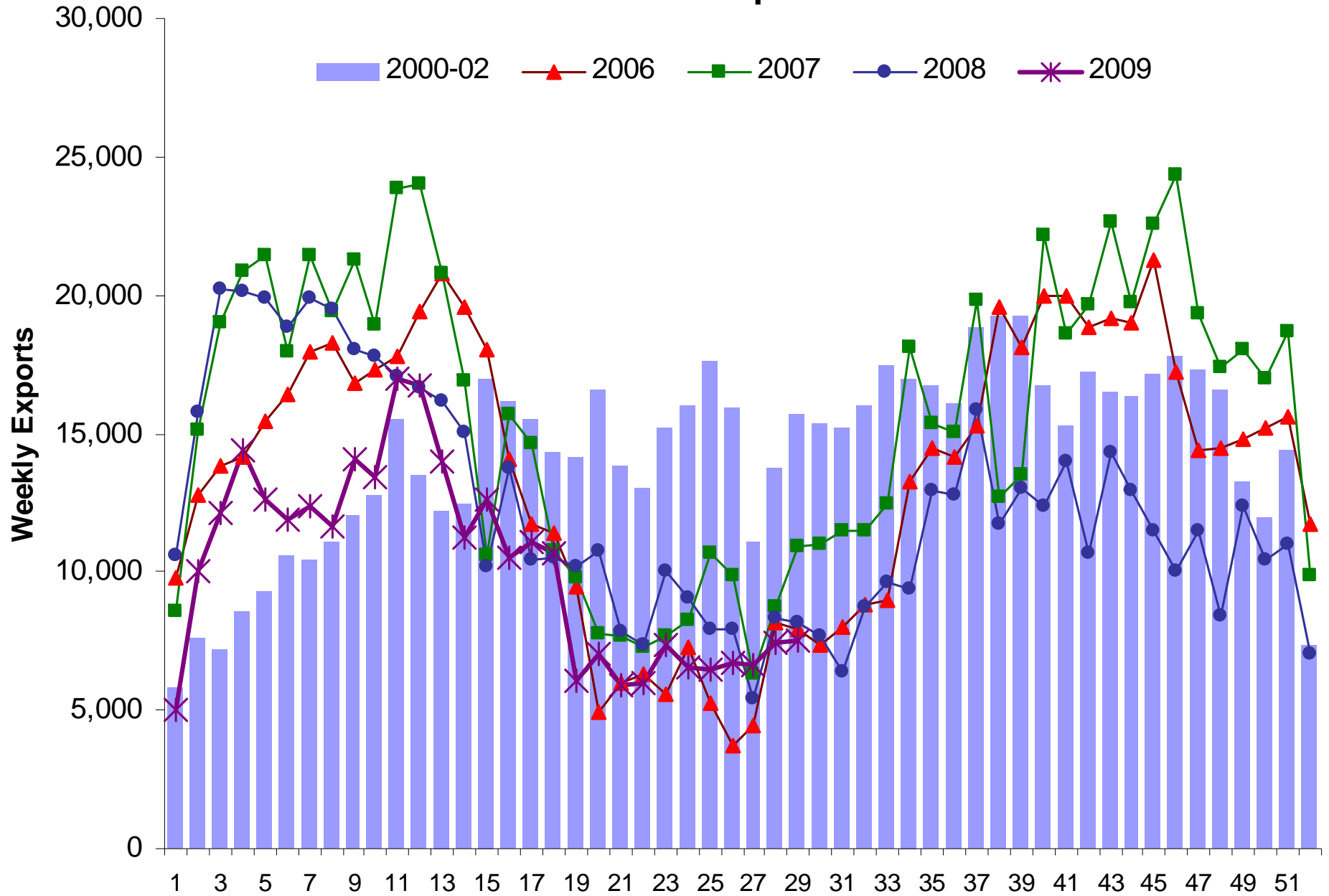
Source: Canfax, Economics & Competitiveness Division, AARD

Canadian Feeder Cattle Exports the US



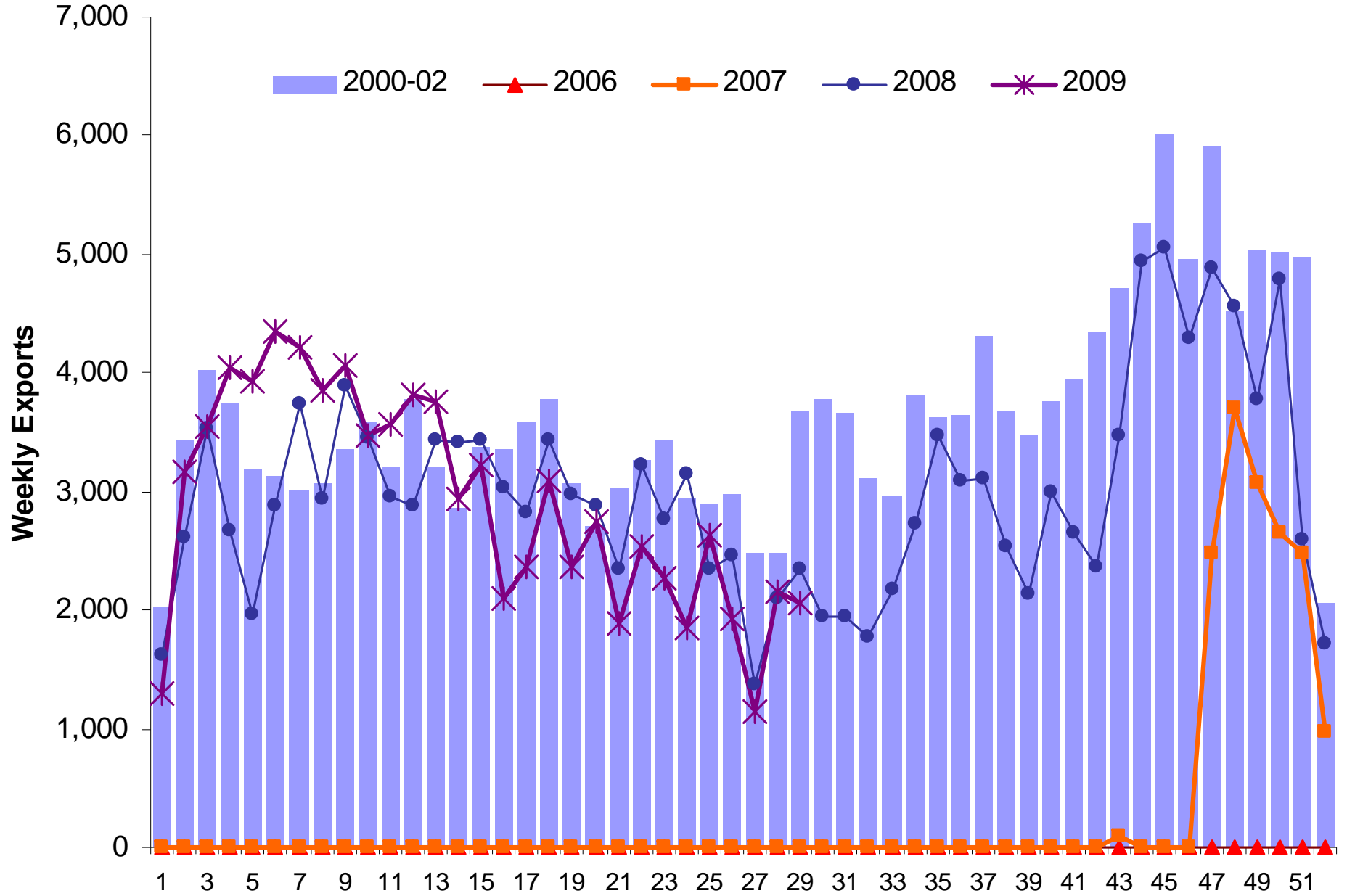
Source: APHIS, LMIC

Canadian Fed Cattle Exports the US



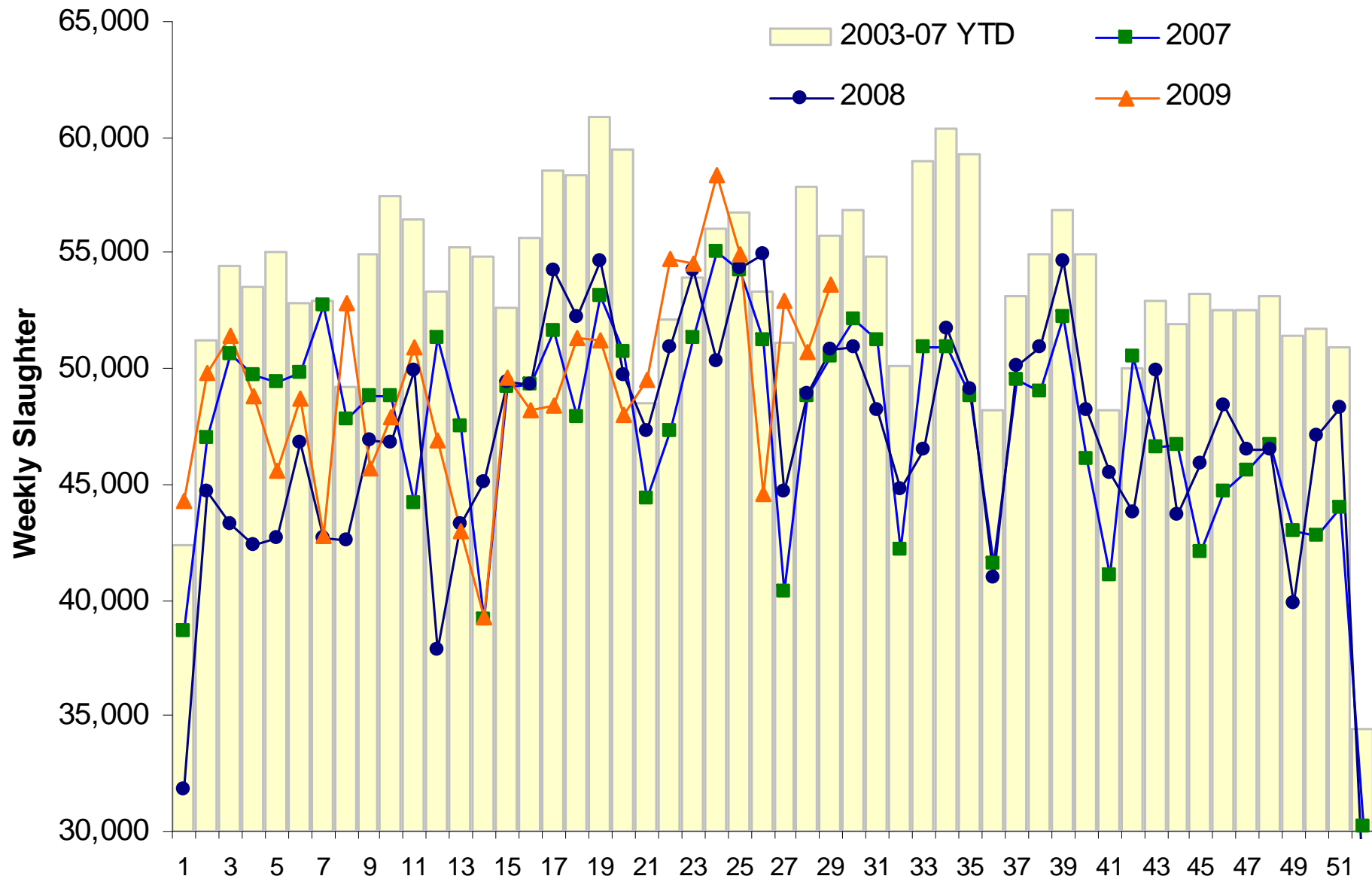
Source: APHIS, LMIC

Canadian Slaughter Cow Exports the US



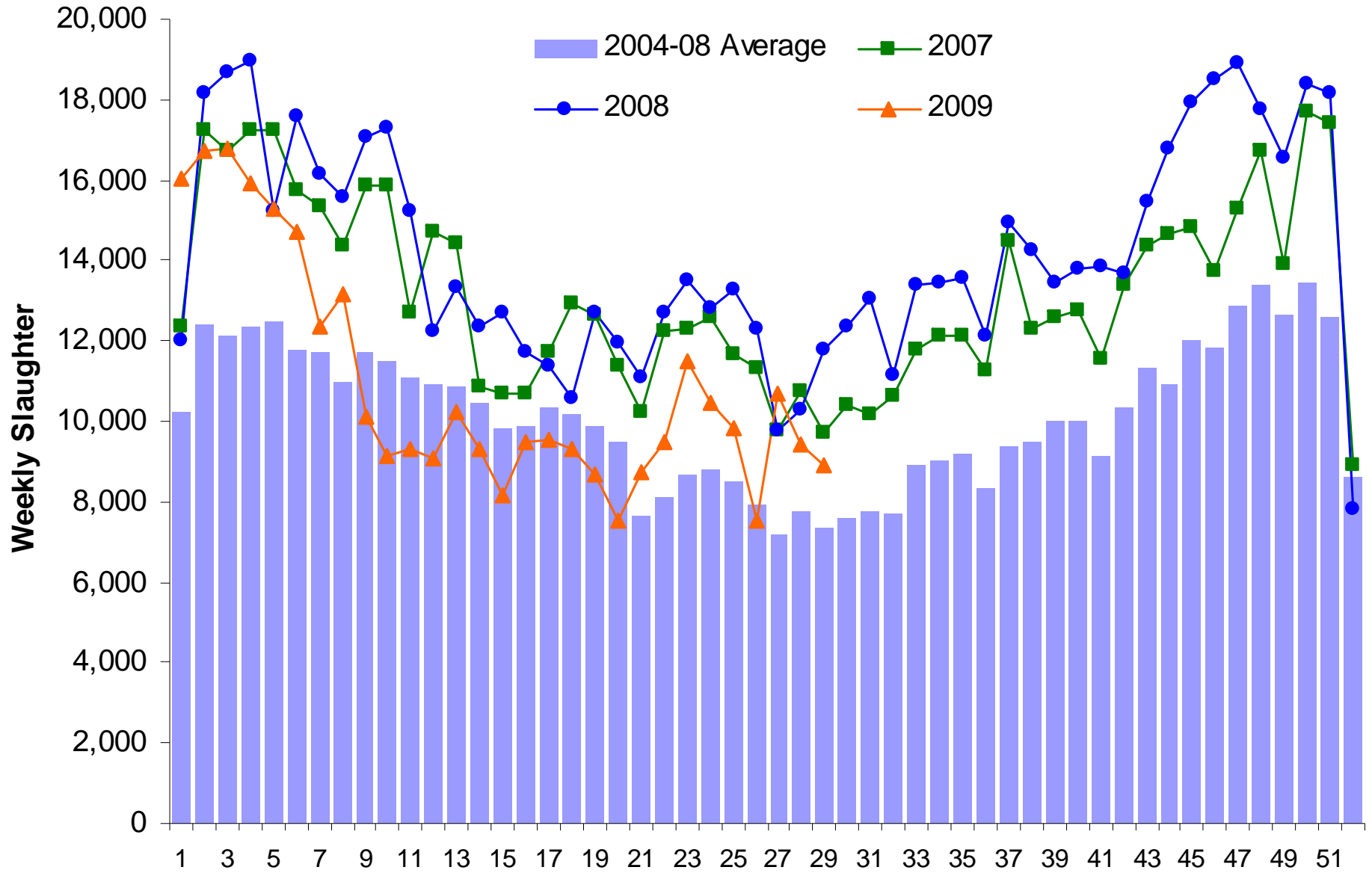
Source: APHIS, LMIC

Canada Fed Cattle Slaughter



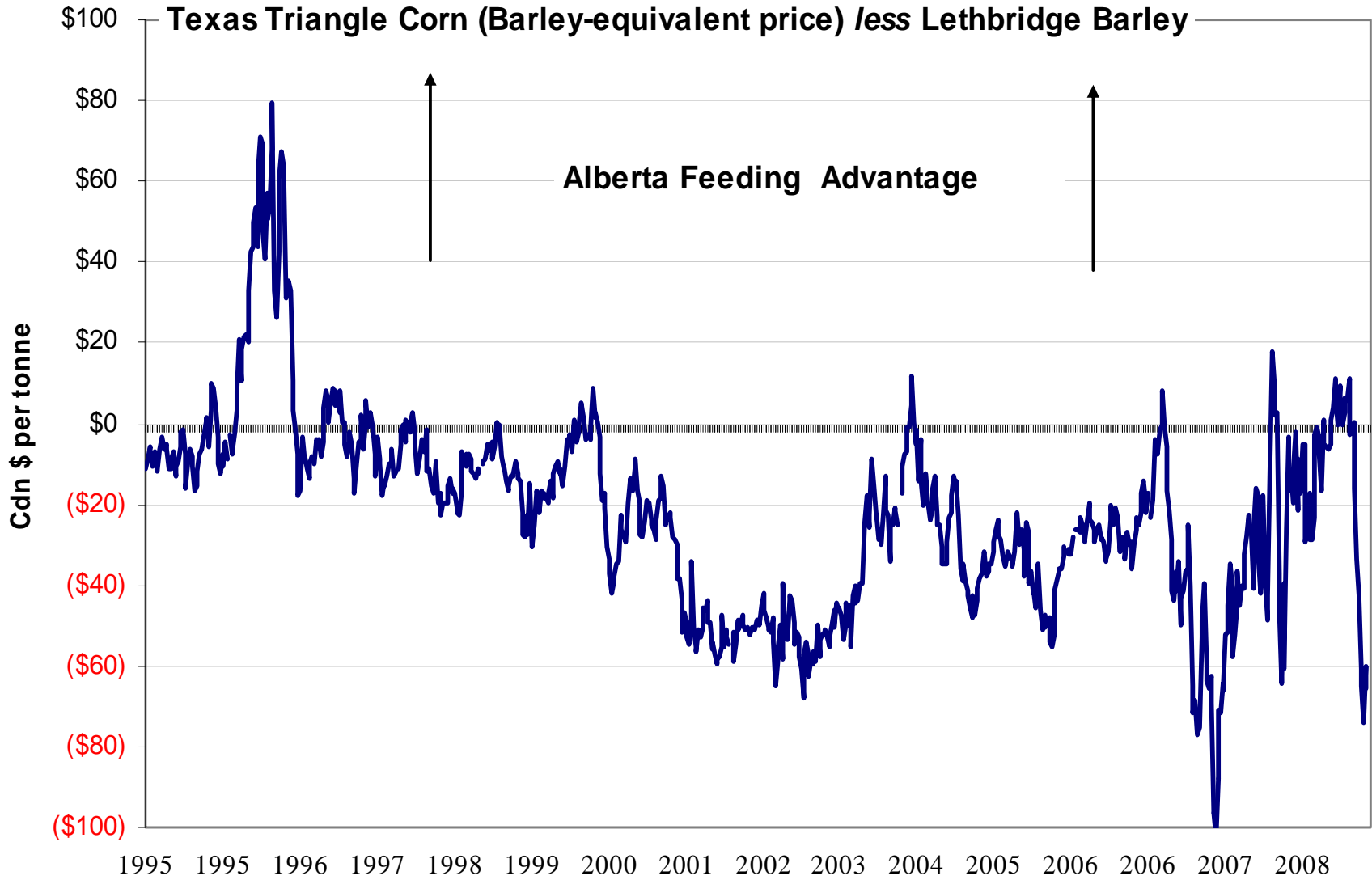
Source: Canadian Beef Grading Agency

Canadian Cow Slaughter



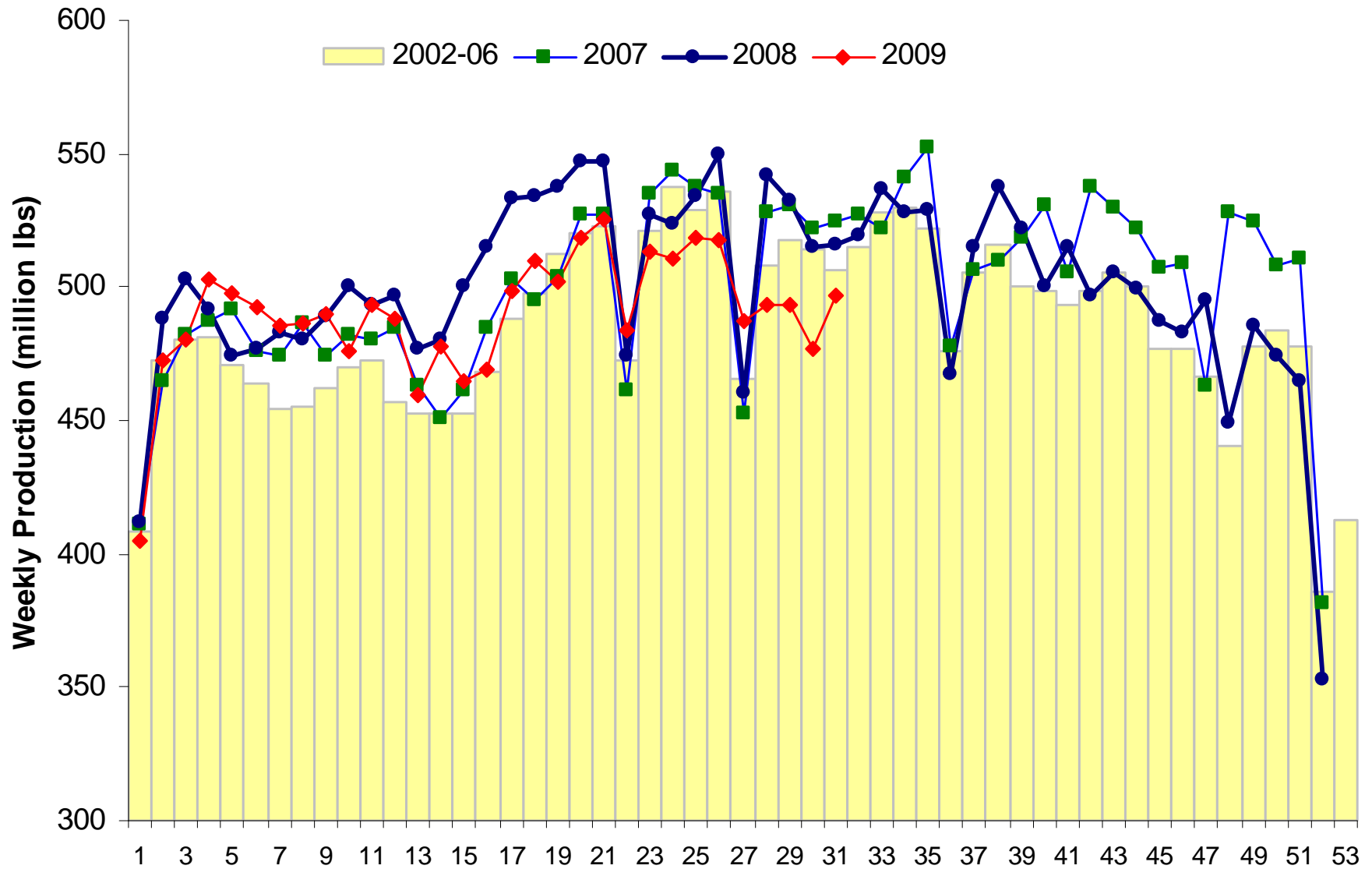
Source: Canadian Beef Grading Agency

Corn-Barley Spread



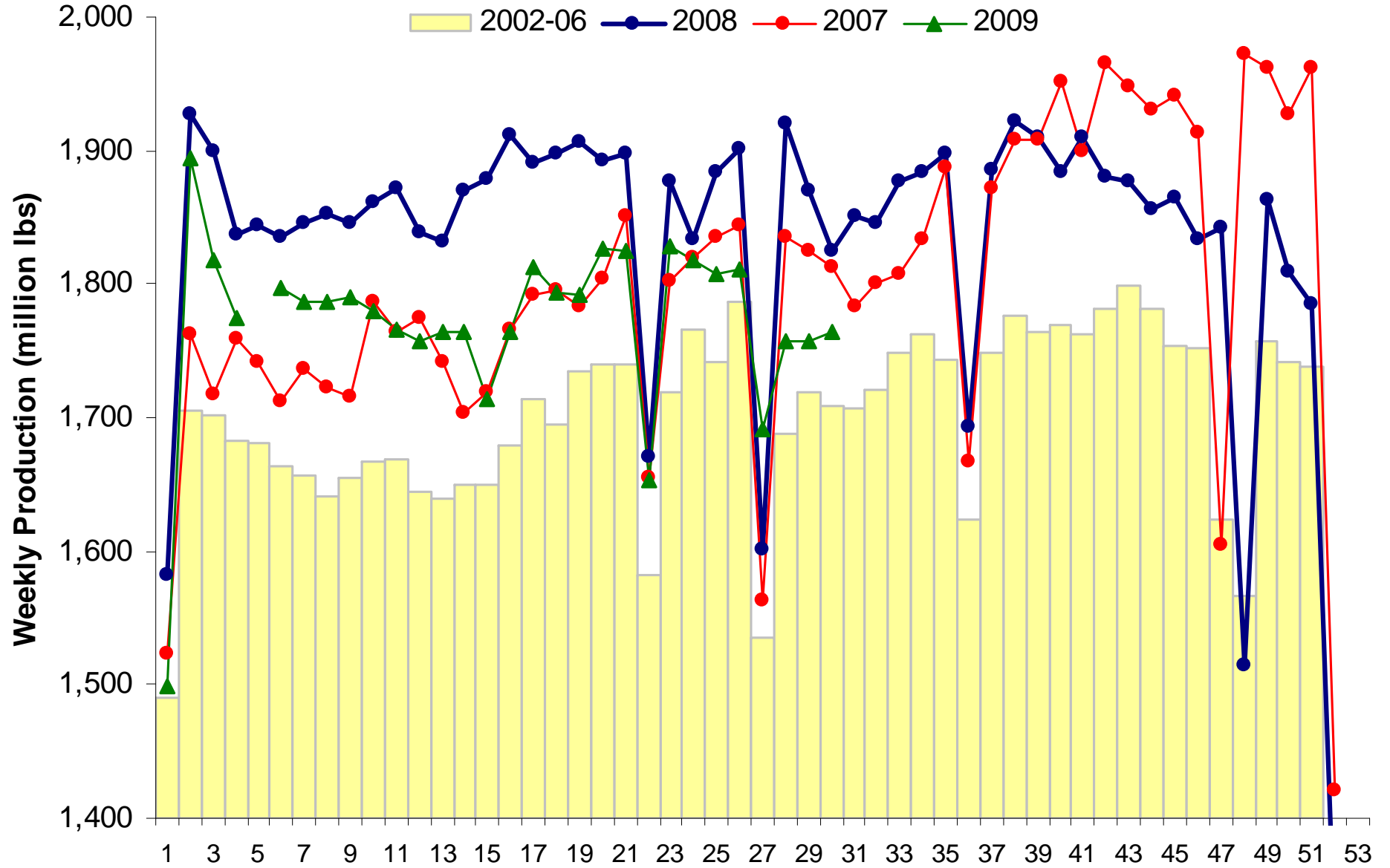
Source: Livestock Marketing Information Center; Alberta Grain Commission

US Beef Production



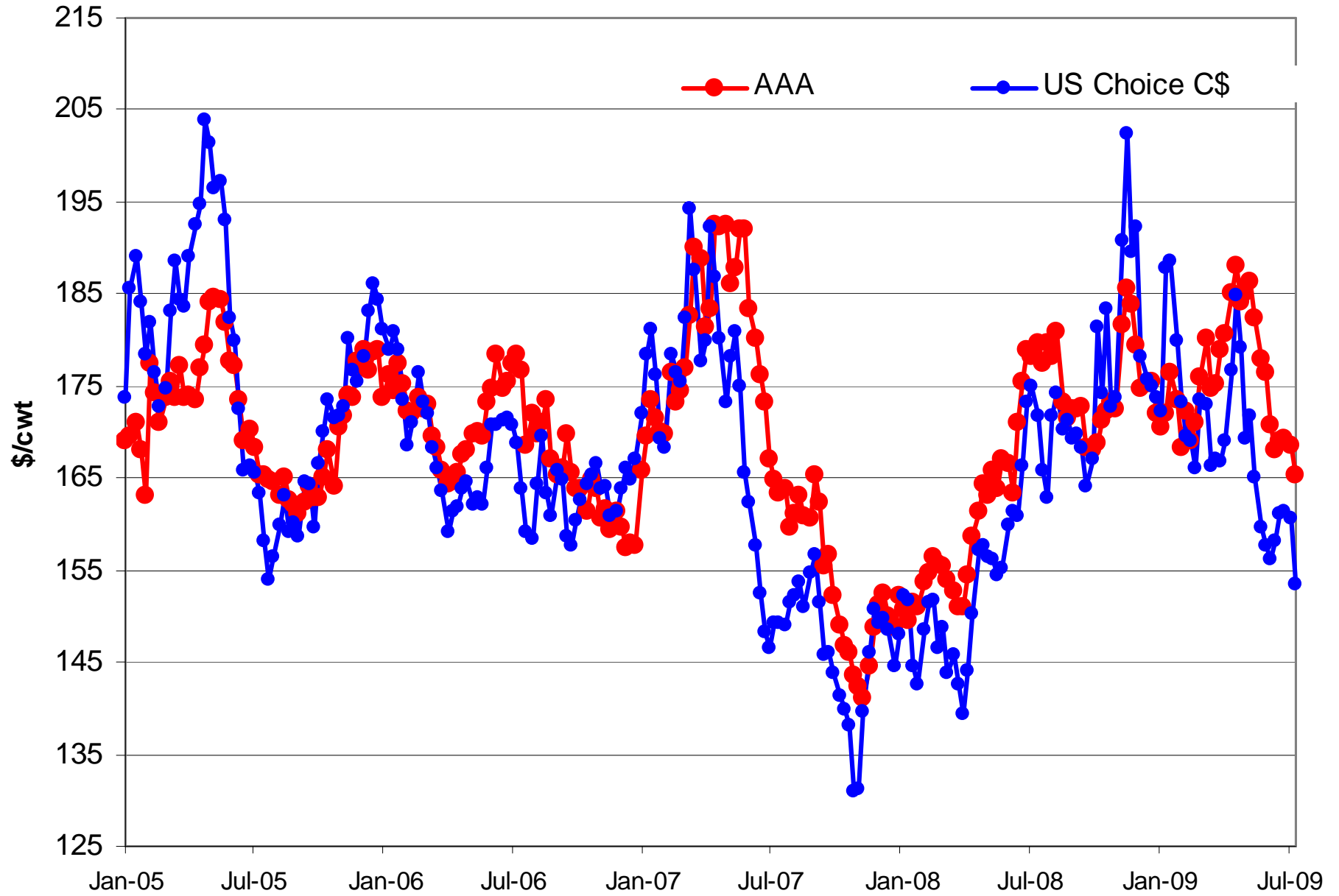
Source: LMIC

US Beef, Pork and Poultry Production



Source: LMIC

Cutout: Canadian AAA (C\$) vs US Choice (C\$)



Source: LMIC, Canfax