

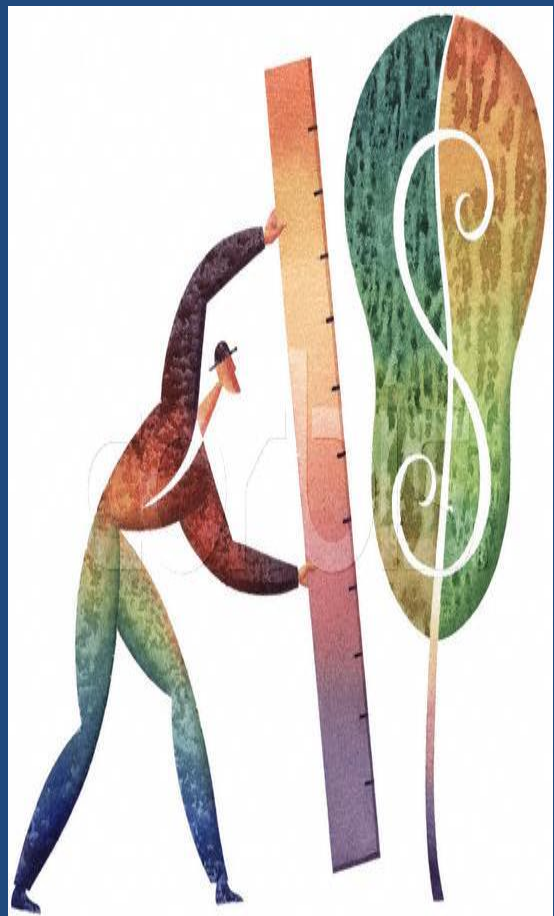
# Alberta Farm Income Update 1989-2017

## Farm Cash Receipts

- Crops
- Livestock
- Program Payments

## Net Farm Income

- Farm Operating Expenses
- Net Cash Income
- Realized Net Income
- Total Net Income



# Alberta Farm Income Update

1989-2017

This edition provides annual and quarterly estimates of Alberta farm cash receipts (crops, livestock and livestock products and direct program payments to producers): annual up to 2016, and preliminary quarterly January to September, 2017. Annual estimates for net farm income are also available.

Note to Users: Percentages in this report are based on unrounded data. Annual estimates are reported on a cash basis and are based on the calendar year.

*The contents of this document may not be used or reproduced without properly accrediting Alberta Agriculture and Forestry, Economics and Competitiveness Branch, Statistics and Data Development Section.*

	<b>Page No.</b>
2016 Was Another Relatively Good Year for Farm Income in Alberta.....	1
Alberta Farm Market Cash Receipts, 2012-2016 Summary.....	1

## TABLES

1. Farm Cash Receipts by Major Type, Alberta and Canada (\$ Thousands), 1989-2016.....	3
2. Alberta Farm Cash Receipts by Detailed Type (\$ Thousands), 2011-2016.....	4
3. Alberta Net Farm Income (\$ Thousands), 1989-2016.....	5
4. Farm Cash Receipts by Major Type, Canada and Selected Provinces (\$ Thousands), 2012-2016.....	6
5. Alberta Farm Cash Receipts by Detailed Type (\$ Thousands), 2016 and 2017 Quarterly.....	7

## FIGURES

1. Alberta Farm Cash Receipts, 2007-2016.....	2
2. Distribution of 2016 Canadian Farm Cash Receipts.....	2
3. Alberta Net Cash Income, 2007-2016.....	2
4. Alberta Farm Cash Receipts by Type, 2007-2016.....	2

**DECEMBER, 2017**

Alberta Agriculture and Forestry  
Economics and Competitiveness Branch  
Statistics and Data Development Section  
Contact: [jeanmarie.uwizeyimana@gov.ab.ca](mailto:jeanmarie.uwizeyimana@gov.ab.ca) Phone: 780-422-3099

## 2016 was another relatively good year for farm income in Alberta

Alberta's total farm cash receipts (FCR) in 2016 was \$13.5 billion, down a marginal 0.7 per cent from 2015, while farm operating expenses fell 3.0 per cent to \$10.1 billion. The province's net cash income (the difference between FCR and expenses) was a record \$3.4 billion (up 7.0 per cent from 2015). Among provinces, Alberta ranked second in FCR, behind Saskatchewan (\$14.1 billion). Nationally, total FCR was \$60.3 billion, slightly increasing by 0.8 per cent from 2015.

Livestock market receipts were \$6.1 billion in 2016 (down 9.6 per cent from 2015), driven largely by lower cattle prices. Top three largest livestock receipts were cattle and calves (down 12.3 per cent to \$4.6 billion), dairy products (up 3.1 per cent to \$561.1 million), and hogs (down 3.9 per cent to \$395.6 million). Alberta led all provinces in cattle and calf market receipts.

Crop market receipts increased 8.3 per cent to \$6.7 billion, the highest on record. Top three largest crop receipts were canola (up 7.9 per cent to \$2.9 billion), wheat including durum (down 4.5 per cent to \$1.9 billion), and dry peas (up 82.0 per cent to \$639.3 million).

Program payments to producers rose 6.7 per cent to \$696.4 million. The increase was largely due to payments under Private Hail Insurance (up 24.6 per cent to 73.7 million), and AgriInvest (up 13.4 per cent to \$73.1 million).

In the third quarter (January to September) of 2017, Alberta's total FCR was \$10.9 billion, up 6.1 per cent from the first nine months of 2016. These receipts were the highest third quarter FCR on record for the province. Alberta led all provinces in third quarter FCR, followed by Saskatchewan (\$10.4 billion) and Ontario (\$9.1 billion).

The increase in FCR was due to higher crop and livestock market receipts, and program payments to producers. Crop market receipts were up 8.8 per cent to \$5.5 billion, driven mainly by increased marketings for some major crops. Livestock market receipts grew 3.3 per cent to \$4.8 billion, the result of higher marketings. Program payments were up 4.8 per cent to \$566.3 million, largely due to higher payments under AgriStability and compensation for animal losses.

### Alberta Farm Market Cash Receipts (\$ Thousands), 2012-2016 Summary

	2012	2013	2014r	2015r	2016r	5-Year Avg 2012-2016	% of 2016 Market Receipts	% Change			
								2013	2014r	2015r	2016r
<b>Total Farm Cash Receipts.....</b>	11,945,828	11,844,104	12,894,345	13,592,248	13,498,200	12,754,945		-0.9	8.9	5.4	-0.7
<b>Market Receipts (1).....</b>	11,174,222	11,147,742	12,345,127	12,939,615	12,801,778	12,081,697	100.0	-0.2	10.7	4.8	-1.1
<b>Crops.....</b>	6,476,214	6,365,528	5,940,865	6,164,361	6,676,012	6,324,596	52.1	-1.7	-6.7	3.8	8.3
<b>Top Three Largest (2).....</b>	5,472,205	5,145,504	4,726,518	4,972,260	5,382,103	5,139,718	42.0	-6.0	-8.1	5.2	8.2
Canola.....	3,076,848	2,575,760	2,513,915	2,641,074	2,850,997	2,731,719	22.3	-16.3	-2.4	5.1	7.9
Wheat (Including Durum).....	2,104,347	2,243,959	1,905,765	1,979,940	1,891,778	2,025,158	14.8	6.6	-15.1	3.9	-4.5
Dry Peas.....	291,010	325,785	306,838	351,246	639,328	382,841	5.0	11.9	-5.8	14.5	82.0
<b>All Other Crops.....</b>	1,004,009	1,220,024	1,214,347	1,192,101	1,293,909	1,184,878	10.1	21.5	-0.5	-1.8	8.5
Barley.....	287,977	460,241	329,359	361,259	266,372	341,042	2.1	59.8	-28.4	9.7	-26.3
Potatoes.....	174,737	160,794	170,142	190,460	240,229	187,272	1.9	-8.0	5.8	11.9	26.1
Floriculture, Nursery and Sod..	118,056	122,943	144,424	139,120	131,427	131,194	1.0	4.1	17.5	-3.7	-5.5
Hay and Clover.....	95,009	100,507	117,651	153,673	162,298	125,828	1.3	5.8	17.1	30.6	5.6
Miscellaneous Crops.....	65,137	64,023	59,752	62,000	67,146	63,612	0.5	-1.7	-6.7	3.8	8.3
Other Crops.....	263,093	311,516	393,019	285,589	426,437	335,931	3.3	18.4	26.2	-27.3	49.3
<b>Livestock and Livestock Products.....</b>	4,698,008	4,782,214	6,404,262	6,775,254	6,125,766	5,757,101	47.9	1.8	33.9	5.8	-9.6
<b>Top Three Largest (2).....</b>	4,188,048	4,253,970	5,841,459	6,179,294	5,539,101	5,200,374	43.3	1.6	37.3	5.8	-10.4
Cattle and Calves.....	3,254,744	3,319,944	4,812,907	5,223,436	4,582,423	4,238,691	35.8	2.0	45.0	8.5	-12.3
Dairy Products.....	520,665	514,937	530,455	544,106	561,055	534,244	4.4	-1.1	3.0	2.6	3.1
Hogs.....	412,639	419,089	498,097	411,752	395,623	427,440	3.1	1.6	18.9	-17.3	-3.9
<b>All Other Livestock.....</b>	509,960	528,244	562,803	595,960	586,665	556,726	4.6	3.6	6.5	5.9	-1.6
Poultry.....	259,157	262,405	251,816	263,329	274,902	262,322	2.1	1.3	-4.0	4.6	4.4
Honey.....	64,579	71,033	76,966	82,601	68,214	72,679	0.5	10.0	8.4	7.3	-17.4
Lambs.....	17,971	14,229	19,241	26,254	25,039	20,547	0.2	-20.8	35.2	36.4	-4.6
Other Livestock.....	168,253	180,577	214,780	223,776	218,510	201,179	1.7	7.3	18.9	4.2	-2.4

r- revised

Avg. - average

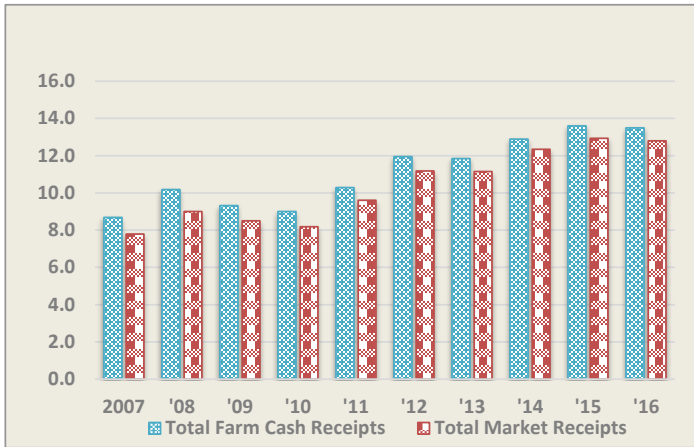
(1) Market receipts are the sum of crop and livestock and livestock product receipts. Program payments are not included.

(2) According to rank in 2016.

Source: Statistics Canada

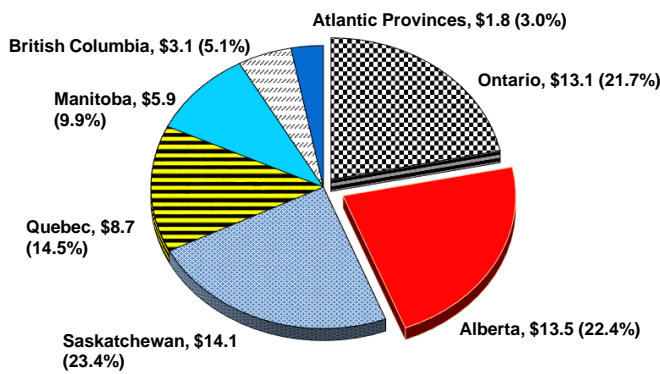
Prepared by: Alberta Agriculture and Forestry, Economics and Competitiveness Branch, Statistics and Data Development Section

**Fig.1 Alberta FCR and Farm Market Receipts (\$ Billions), 2007-2016**



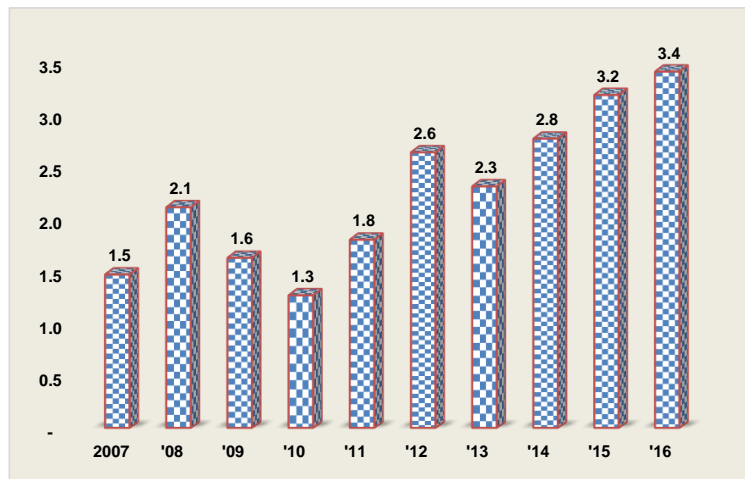
**Fig. 2 Distribution of 2016 Canadian Farm Cash Receipts\* (\$ Billions)**

**Canada Total Farm Cash Receipts = \$60.3 Billion**

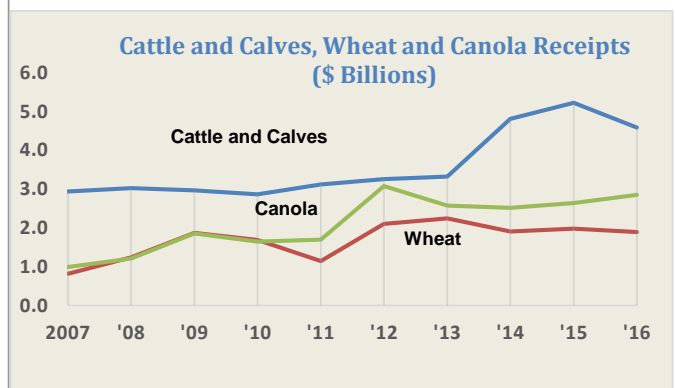
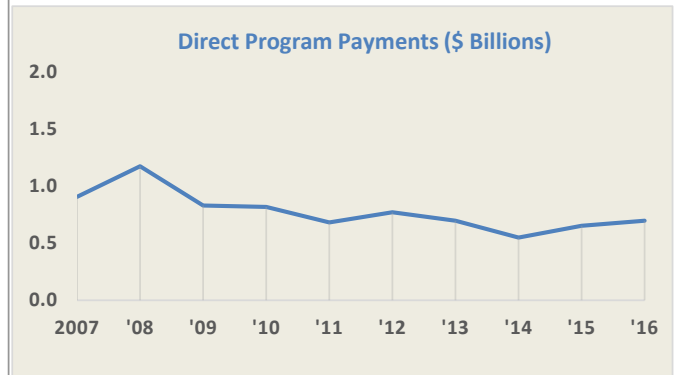
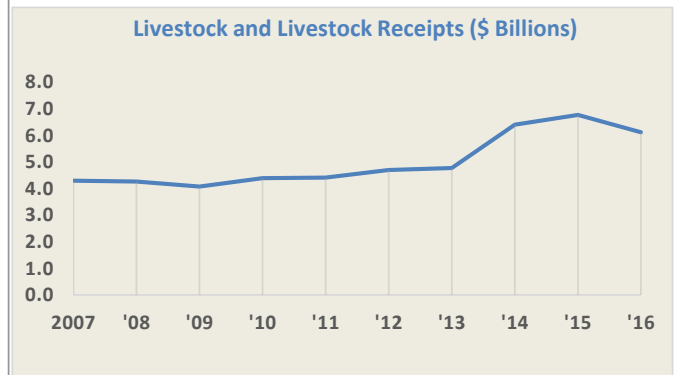
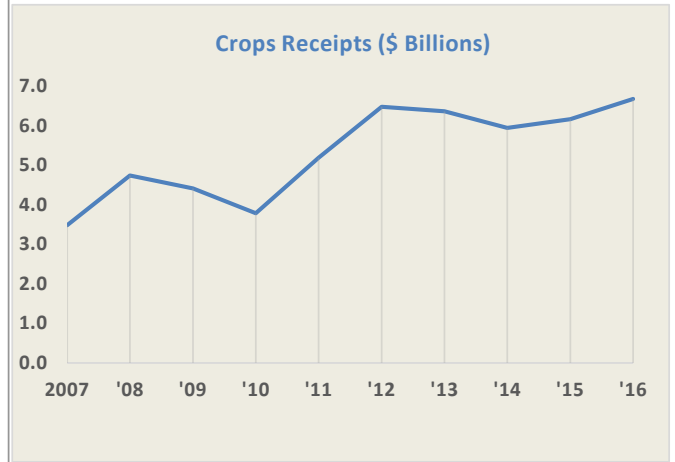


\*Farm cash receipts include program payments.

**Fig.3 Alberta Net Cash Income (\$ Billions), 2007-2016**



**Fig. 4 Alberta Farm Cash Receipts by Type, 2007-2016**



Source: Statistics Canada

Prepared by: Alberta Agriculture and Forestry, Economics and Competitiveness Branch, Statistics and Data Development Section

**Tab. 1 Farm Cash Receipts by Major Type, Alberta and Canada (\$ Thousands), 1989-2016**

	ALBERTA					CANADA				
	Total Farm Cash Receipts	Market Receipts			Direct Program Payments	Total Farm Cash Receipts	Market Receipts			Direct Program Payments
		Crops	Livestock & Livestock Products	Total Market Receipts			Crops	Livestock & Livestock Products	Total Market Receipts	
<b>\$ Thousands</b>										
1989	4,599,469	1,860,196	2,179,241	4,039,437	560,032	22,919,269	8,769,882	10,901,201	19,671,083	3,248,186
1990	4,283,091	1,641,397	2,323,575	3,964,972	318,119	21,997,939	8,875,919	11,268,781	20,144,700	1,853,239
1991	4,234,918	1,537,300	2,256,090	3,793,390	441,528	21,999,545	8,725,344	10,912,458	19,637,802	2,361,743
1992	4,956,259	1,502,321	2,563,910	4,066,231	890,028	23,730,202	8,551,035	11,388,328	19,939,363	3,790,839
1993	5,064,027	1,562,256	2,925,608	4,487,864	576,163	24,188,520	9,045,654	12,300,208	21,345,862	2,842,658
1994	5,581,321	2,162,536	3,036,576	5,199,112	382,209	25,881,396	11,542,606	12,513,891	24,056,497	1,824,899
1995	5,969,065	2,625,273	3,166,414	5,791,687	177,378	27,123,321	13,114,105	12,703,800	25,817,905	1,305,416
1996	6,528,207	2,974,815	3,401,506	6,376,321	151,886	29,075,327	14,016,229	13,857,294	27,873,523	1,201,804
1997	6,464,646	2,637,771	3,609,146	6,246,917	217,729	29,835,513	14,093,889	14,632,865	28,726,754	1,108,759
1998	6,418,118	2,469,562	3,713,462	6,183,024	235,094	29,505,263	13,642,036	14,441,683	28,083,719	1,421,544
1999	6,530,826	2,341,324	3,971,255	6,312,579	218,247	30,256,780	13,121,182	15,159,564	28,280,746	1,976,034
2000	7,583,288	2,363,588	4,512,132	6,875,720	707,568	32,879,399	12,969,706	17,100,989	30,070,695	2,808,704
2001	8,368,417	2,304,066	5,244,924	7,548,990	819,427	36,243,327	13,504,866	18,972,521	32,477,387	3,765,940
2002	8,315,809	2,214,838	5,062,060	7,276,898	1,038,911	35,970,624	14,411,906	18,129,777	32,541,683	3,428,941
2003	7,101,628	2,027,056	3,706,561	5,733,617	1,368,011	34,244,827	13,312,062	16,084,649	29,396,711	4,848,116
2004	8,013,369	2,656,410	3,914,271	6,570,681	1,442,688	36,338,224	14,420,425	17,055,534	31,475,959	4,862,265
2005	7,905,783	2,431,210	4,357,604	6,788,814	1,116,969	36,918,791	13,611,549	18,383,821	31,995,370	4,923,422
2006	7,779,064	2,641,147	4,192,803	6,833,950	945,114	37,038,684	14,728,884	17,776,125	32,505,009	4,533,674
2007	8,691,514	3,483,643	4,300,901	7,784,544	906,970	40,865,566	18,447,963	18,328,170	36,776,133	4,089,433
2008	10,178,520	4,738,293	4,266,464	9,004,757	1,173,763	46,059,835	23,016,154	18,910,571	41,926,725	4,133,110
2009	9,326,081	4,416,538	4,079,805	8,496,343	829,738	44,559,519	23,214,042	18,055,155	41,269,197	3,290,322
2010	9,000,917	3,784,264	4,399,754	8,184,018	816,899	44,325,063	22,301,906	18,887,871	41,189,777	3,135,285
2011	10,289,441	5,189,051	4,419,074	9,608,125	681,316	49,634,044	25,827,372	20,328,875	46,156,247	3,477,798
2012	11,945,828	6,476,214	4,698,008	11,174,222	771,606	53,764,079	29,483,686	20,875,337	50,359,023	3,405,056
2013	11,844,104	6,365,528	4,782,214	11,147,742	696,362	55,227,014	30,996,302	21,545,206	52,541,508	2,685,507
2014r	12,894,345	5,940,865	6,404,262	12,345,127	549,219	58,060,042	30,249,647	25,689,698	55,939,345	2,120,698
2015r	13,592,248	6,164,361	6,775,254	12,939,615	652,633	59,822,820	32,008,531	25,679,505	57,688,036	2,134,784
2016r	13,498,200	6,676,012	6,125,766	12,801,778	696,422	60,316,206	33,992,808	23,881,226	57,874,034	2,442,172
<b>Previous Five-Year Average 2011-2015</b>										
	12,113,193	6,027,204	5,415,762	11,442,966	670,227	55,301,600	29,713,108	22,823,724	52,536,832	2,764,769
<b>% Change 2016/Average 2011-2015</b>										
	11.4	10.8	13.1	11.9	3.9	9.1	14.4	4.6	10.2	-11.7
<b>Five-Year % Change 2016/2012</b>										
	13.0	3.1	30.4	14.6	-9.7	12.2	15.3	14.4	14.9	-28.3
<b>Annual % Change</b>										
1993	2.2	4.0	14.1	10.4	-35.3	1.9	5.8	8.0	7.1	-25.0
1994	10.2	38.4	3.8	15.8	-33.7	7.0	27.6	1.7	12.7	-35.8
1995	6.9	21.4	4.3	11.4	-53.6	4.8	13.6	1.5	7.3	-28.5
1996	9.4	13.3	7.4	10.1	-14.4	7.2	6.9	9.1	8.0	-7.9
1997	-1.0	-11.3	6.1	-2.0	43.4	2.6	0.6	5.6	3.1	-7.7
1998	-0.7	-6.4	2.9	-1.0	8.0	-1.1	-3.2	-1.3	-2.2	28.2
1999	1.8	-5.2	6.9	2.1	-7.2	2.5	-3.8	5.0	0.0	39.0
2000	16.1	1.0	13.6	8.9	224.2	8.7	-1.2	12.8	6.3	42.1
2001	10.4	-2.5	16.2	9.8	15.8	10.2	4.1	10.9	8.0	34.1
2002	-0.6	-3.9	-3.5	-3.6	26.8	-0.8	6.7	-4.4	0.2	-8.9
2003	-14.6	-8.5	-26.8	-21.2	31.7	-4.8	-7.6	-11.3	-9.7	41.4
2004	12.8	31.0	5.6	14.6	5.5	6.1	8.3	6.0	7.1	0.3
2005	-1.3	-8.5	11.3	3.3	-22.6	1.6	-5.6	7.8	1.7	1.3
2006	-1.6	8.6	-3.8	0.7	-15.4	0.3	8.2	-3.3	1.6	-7.9
2007	11.7	31.9	2.6	13.9	-4.0	10.3	25.3	3.1	13.1	-9.8
2008	17.1	36.0	-0.8	15.7	29.4	12.7	24.8	3.2	14.0	1.1
2009	-8.4	-6.8	-4.4	-5.6	-29.3	-3.3	0.9	-4.5	-1.6	-20.4
2010	-3.5	-14.3	7.8	-3.7	-1.5	-0.5	-3.9	4.6	-0.2	-4.7
2011	14.3	37.1	0.4	17.4	-16.6	12.0	15.8	7.6	12.1	10.9
2012	16.1	24.8	6.3	16.3	13.3	8.3	14.2	2.7	9.1	-2.1
2013	-0.9	-1.7	1.8	-0.2	-9.8	2.7	5.1	3.2	4.3	-21.1
2014r	8.9	-6.7	33.9	10.7	-21.1	5.1	-2.4	19.2	6.5	-21.0
2015r	5.4	3.8	5.8	4.8	18.8	3.0	5.8	0.0	3.1	0.7
2016r	-0.7	8.3	-9.6	-1.1	6.7	0.8	6.2	-7.0	0.3	14.4

r- revised

Source: Statistics Canada

Prepared by: Alberta Agriculture and Forestry, Economics and Competitiveness Branch, Statistics and Data Development Section

**Tab. 2 Alberta Farm Cash Receipts by Detailed Type (\$ Thousands), 2011-2016**

	2011	2012	2013	2014r	2015r	2016r	% of 2016	Average	Annual % Change			
								2012-'16	2013	2014r	2015r	2016r
Wheat Excluding Durum.....	1,214,215	1,674,690	1,915,882	1,695,460	1,775,065	1,646,734	12.2	1,741,566	14.4	-11.5	4.7	-7.2
Wheat Excluding Durum, CWB.....	243,754	250,195	103,579	13,230	T	T	-	122,335	-58.6	-87.2	-100.0	-
Total Wheat Excluding Durum	1,457,969	1,924,885	2,019,461	1,708,690	1,775,065	1,646,734	12.2	1,814,967	4.9	-15.4	3.9	-7.2
Durum Wheat.....	95,503	133,184	201,756	194,023	204,875	245,044	1.8	195,776	51.5	-3.8	5.6	19.6
Durum Wheat, CWB.....	40,532	46,278	22,742	3,052	T	T	-	24,024	-50.9	-86.6	-	-
Total Durum Wheat.....	136,035	179,462	224,498	197,075	204,875	245,044	1.8	210,191	25.1	-12.2	4.0	19.6
<b>Total All Wheat.....</b>	<b>1,594,004</b>	<b>2,104,347</b>	<b>2,243,959</b>	<b>1,905,765</b>	<b>1,979,940</b>	<b>1,891,778</b>	<b>14.0</b>	<b>2,025,158</b>	<b>6.6</b>	<b>-15.1</b>	<b>3.9</b>	<b>-4.5</b>
Oats.....	48,160	126,191	41,272	34,755	37,355	29,550	0.2	53,825	-67.3	-15.8	7.5	-20.9
Barley.....	233,933	287,977	460,241	329,359	361,259	266,372	2.0	341,042	59.8	-28.4	9.7	-26.3
Barley, CWB.....	13,714	15,341	9,200	1,747	T	T	-	8,763	-40.0	-81.0	-	-
<b>Total Barley.....</b>	<b>247,647</b>	<b>303,318</b>	<b>469,441</b>	<b>331,106</b>	<b>361,259</b>	<b>266,372</b>	<b>2.0</b>	<b>346,299</b>	<b>54.8</b>	<b>-29.5</b>	<b>9.1</b>	<b>-26.3</b>
Deferred Grain.....	-456,118	-574,138	-566,314	-460,410	-562,553	-646,896	-4.8	-562,062	-1.4	-18.7	22.2	15.0
Liquidation of Deferred Grain.....	286,945	481,497	586,084	554,043	460,793	568,264	4.2	530,136	21.7	-5.5	-16.8	23.3
Total Deferments.....	-169,173	-92,641	19,770	93,633	-101,760	-78,632	-0.6	-31,926	-121.3	373.6	-208.7	-22.7
Rye.....	7,808	9,287	5,475	3,046	3,910	4,014	0.0	5,146	-41.0	-44.4	28.4	2.7
Flaxseed.....	8,320	21,733	19,010	24,232	27,756	18,394	0.1	22,225	-12.5	27.5	14.5	-33.7
<b>Canola.....</b>	<b>2,626,269</b>	<b>3,076,848</b>	<b>2,575,760</b>	<b>2,513,915</b>	<b>2,641,074</b>	<b>2,850,997</b>	<b>21.1</b>	<b>2,731,719</b>	<b>-16.3</b>	<b>-2.4</b>	<b>5.1</b>	<b>7.9</b>
Corn.....	2,500	5,000	7,763	8,772	10,623	9,429	0.1	8,317	55.3	13.0	21.1	-11.2
<b>Potatoes.....</b>	<b>142,186</b>	<b>174,737</b>	<b>160,794</b>	<b>170,142</b>	<b>190,460</b>	<b>240,229</b>	<b>1.8</b>	<b>187,272</b>	<b>-8.0</b>	<b>5.8</b>	<b>11.9</b>	<b>26.1</b>
Greenhouse Vegetables.....	43,262	51,068	53,033	52,803	53,584	55,675	0.4	53,233	3.8	-0.4	1.5	3.9
Field Vegetables.....	25,635	23,701	33,039	41,144	44,025	44,962	0.3	37,374	39.4	24.5	7.0	2.1
Total Tree Fruits.....	33	191	192	168	135	130	0.0	163	0.5	-12.5	-19.6	-3.7
Apples.....	14	17	x	x	25	x	-	21	-100.0	-	-	-
Total Small Fruits.....	1,530	1,809	1,993	1,680	1,945	1,588	0.0	1,803	10.2	-15.7	15.8	-18.4
Strawberries.....	589	880	750	775	782	880	0.0	813	-14.8	3.3	0.9	12.5
<b>Floriculture/Nursery/Sod.....</b>	<b>121,884</b>	<b>118,056</b>	<b>122,943</b>	<b>144,424</b>	<b>139,120</b>	<b>131,427</b>	<b>1.0</b>	<b>131,194</b>	<b>4.1</b>	<b>17.5</b>	<b>-3.7</b>	<b>-5.5</b>
Floriculture.....	61,107	55,332	58,853	70,819	65,910	66,436	0.5	63,470	6.4	20.3	-6.9	0.8
Nursery.....	38,573	39,100	34,849	50,105	45,126	x	-	42,295	-10.9	43.8	-9.9	-
Sod.....	22,204	23,625	29,242	23,501	28,084	x	-	26,113	23.8	-19.6	19.5	-
Mustard Seed.....	17,545	16,441	27,032	22,734	28,543	34,212	0.3	25,792	64.4	-15.9	25.6	19.9
Lentils.....	32,726	22,180	33,120	49,078	107,477	224,241	1.7	87,219	49.3	48.2	119.0	108.6
Dry Beans.....	20,580	25,900	24,249	27,717	25,806	32,760	0.2	27,286	-6.4	14.3	-6.9	26.9
Dry Peas.....	255,315	291,010	325,785	306,838	351,246	639,328	4.7	382,841	11.9	-5.8	14.5	82.0
Chick Peas.....	2,276	4,322	3,123	3,118	4,857	7,892	0.1	4,662	-27.7	-0.2	55.8	62.5
Forage and Grass Seed.....	20,773	28,682	29,144	24,115	36,796	37,087	0.3	31,165	1.6	-17.3	52.6	0.8
<b>Hay and Clover.....</b>	<b>77,705</b>	<b>95,009</b>	<b>100,507</b>	<b>117,651</b>	<b>153,673</b>	<b>162,298</b>	<b>1.2</b>	<b>125,828</b>	<b>5.8</b>	<b>17.1</b>	<b>30.6</b>	<b>5.6</b>
Forest Products.....	2,606	2,684	2,846	2,895	2,957	3,073	0.0	2,891	6.0	1.7	2.1	3.9
Christmas Trees.....	976	1,203	1,255	1,380	1,581	2,065	0.0	1,497	4.3	10.0	14.6	30.6
Miscellaneous Crops.....	22,423	65,137	64,023	59,752	62,000	67,146	0.5	63,612	-1.7	-6.7	3.8	8.3
<b>TOTAL CROPS</b>	<b>5,189,051</b>	<b>6,476,214</b>	<b>6,365,528</b>	<b>5,940,865</b>	<b>6,164,361</b>	<b>6,676,012</b>	<b>49.5</b>	<b>6,324,596</b>	<b>-1.7</b>	<b>-6.7</b>	<b>3.8</b>	<b>8.3</b>
Cattle.....	3,005,556	3,238,367	3,297,340	4,763,283	5,166,777	4,548,834	33.7	4,202,920	1.8	44.5	8.5	-12.0
Calves.....	20,166	16,377	22,604	49,624	56,659	33,589	0.2	35,771	38.0	119.5	14.2	-40.7
<b>Total Cattle and Calves.....</b>	<b>3,025,722</b>	<b>3,254,744</b>	<b>3,319,944</b>	<b>4,812,907</b>	<b>5,223,436</b>	<b>4,582,423</b>	<b>33.9</b>	<b>4,238,691</b>	<b>2.0</b>	<b>45.0</b>	<b>8.5</b>	<b>-12.3</b>
Hogs.....	416,649	412,639	419,089	498,097	411,752	395,623	2.9	427,440	1.6	18.9	-17.3	-3.9
Sheep.....	x	x	x	x	x	x	-	-	-	-	-	-
Lambs.....	21,562	17,971	14,229	19,241	26,254	25,039	0.2	20,547	-20.8	35.2	36.4	-4.6
Dairy Products.....	504,142	520,665	514,937	530,455	544,106	561,055	4.2	534,244	-1.1	-	2.6	3.1
Poultry (Hens/Chickens/Turkeys).....	237,141	259,157	262,405	251,816	263,329	274,902	2.0	262,322	1.3	-4.0	4.6	4.4
Total Eggs.....	63,296	70,053	80,610	81,193	82,658	90,882	0.7	81,079	15.1	0.7	1.8	9.9
Honey.....	57,963	64,579	71,033	76,966	82,601	68,214	0.5	72,679	10.0	8.4	7.3	-17.4
Furs.....	x	x	x	x	x	x	-	-	-	-	-	-
Miscellaneous Livestock.....	91,528	97,305	99,049	132,645	140,329	126,877	0.9	119,241	1.8	33.9	5.8	-9.6
<b>TOTAL LIVESTOCK</b>	<b>4,419,074</b>	<b>4,698,008</b>	<b>4,782,214</b>	<b>6,404,262</b>	<b>6,775,254</b>	<b>6,125,766</b>	<b>45.4</b>	<b>5,757,101</b>	<b>1.8</b>	<b>33.9</b>	<b>5.8</b>	<b>-9.6</b>
<b>MARKET RECEIPTS (2)</b>	<b>9,608,125</b>	<b>11,174,222</b>	<b>11,147,742</b>	<b>12,345,127</b>	<b>12,939,615</b>	<b>12,801,778</b>	<b>94.8</b>	<b>12,081,697</b>	<b>-0.2</b>	<b>10.7</b>	<b>4.8</b>	<b>-1.1</b>
AgriInvest.....	90,012	75,324	89,729	71,530	64,466	73,108	0.5	74,831	19.1	-20.3	-9.9	13.4
AgriStability.....	198,047	90,038	59,913	50,304	58,078	56,214	0.4	62,909	-33.5	-16.0	15.5	-3.2
Crop and Private Hail Insurance.....	363,977	567,755	524,678	417,119	515,329	528,970	3.9	510,770	-7.6	-20.5	23.5	2.6
Crop Insurance.....	329,778	482,153	457,540	312,177	456,147	455,228	3.4	432,649	-5.1	-31.8	46.1	-0.2
Private Hail Insurance.....	34,199	85,602	67,138	104,942	59,182	73,742	0.5	78,121	-21.6	56.3	-43.6	24.6
Other Payments.....	29,280	38,489	22,042	10,266	14,760	38,130	0.3	24,737	-42.7	-53.4	43.8	158.3
<b>DIRECT PROGRAM PAYMENTS</b>	<b>681,316</b>	<b>771,606</b>	<b>696,362</b>	<b>549,219</b>	<b>652,633</b>	<b>696,422</b>	<b>5.2</b>	<b>673,248</b>	<b>-9.8</b>	<b>-21.1</b>	<b>18.8</b>	<b>6.7</b>
<b>TOTAL FARM CASH RECEIPTS</b>	<b>10,289,441</b>	<b>11,945,828</b>	<b>11,844,104</b>	<b>12,894,346</b>	<b>13,592,248</b>	<b>13,498,200</b>	<b>100.0</b>	<b>12,754,945</b>	<b>-0.9</b>	<b>8.9</b>	<b>5.4</b>	<b>-0.7</b>

r - revised    x - confidential    T - series terminated    0.0 - too small to be expressed    - not applicable

(1) As of 2012, receipts from sugar beets are accounted for in miscellaneous crops.

(2) Market receipts are the sum of crop and livestock and livestock product receipts. Program payments are not included.

Source: Statistics Canada

Prepared by: Alberta Agriculture and Forestry, Economics and Competitiveness Branch, Statistics and Data Development Section

**Tab. 3 Alberta Net Farm Income (\$ Thousands), 1989-2016**

	1	2	3	4	5	6	7	8
	Farm Cash Receipts (Includes Pgm. Payments)	Farm Operating Expenses After Rebates	(1-2) Net Cash Income	Income- In- Kind	Depreciation Charges	(3+4-5) Realized Net Income	Value of Inventory Change	(6+7) Total Net Income
<b>\$ Thousands</b>								
1989	4,599,469	3,421,258	1,178,211	13,130	716,248	475,093	99,799	574,892
1990	4,283,091	3,407,190	875,901	13,139	745,388	143,652	202,391	346,043
1991	4,234,918	3,541,296	693,622	12,326	726,570	-20,622	164,210	143,588
1992	4,956,259	3,645,587	1,310,672	12,830	717,642	605,860	-160,060	445,800
1993	5,064,027	4,013,191	1,050,836	14,955	735,415	330,376	601,179	931,555
1994	5,581,321	4,344,105	1,237,216	15,549	785,827	466,938	103,018	569,956
1995	5,969,065	4,648,930	1,320,135	15,153	850,290	484,998	396,563	881,561
1996	6,528,207	4,875,544	1,652,663	16,518	923,756	745,425	13,800	759,225
1997	6,464,646	5,126,932	1,337,714	9,305	988,478	358,541	-61,562	296,979
1998	6,418,118	5,276,290	1,141,828	8,631	1,036,389	114,070	190,282	304,352
1999	6,530,826	5,717,676	813,150	8,402	1,072,801	-251,249	491,929	240,680
2000	7,583,288	6,148,381	1,434,907	9,048	1,084,973	358,982	29,821	388,803
2001	8,368,417	6,458,552	1,909,865	8,977	1,122,187	796,655	-258,676	537,979
2002	8,315,809	6,321,126	1,994,683	8,386	1,111,527	891,542	-1,066,029	-174,487
2003	7,101,628	6,323,867	777,761	8,302	1,144,436	-358,373	941,157	582,784
2004	8,013,369	6,235,036	1,778,333	10,880	1,140,581	648,632	507,193	1,155,825
2005	7,905,783	6,569,034	1,336,750	14,449	1,182,611	168,588	287,055	455,642
2006	7,779,064	6,756,426	1,022,638	10,876	1,194,559	-161,045	-286,598	-447,642
2007	8,691,514	7,226,787	1,464,727	8,154	1,238,716	234,164	-289,055	-54,891
2008	10,178,520	8,071,086	2,107,434	8,051	1,282,428	833,057	738,440	1,571,498
2009	9,326,081	7,702,104	1,623,977	7,011	1,335,727	295,261	-623,961	-328,700
2010	9,000,917	7,734,658	1,266,258	7,497	1,323,298	-49,543	321,963	272,420
2011	10,289,441	8,492,047	1,797,394	8,728	1,392,998	413,124	526,436	939,560
2012	11,945,828	9,313,149	2,632,679	8,653	1,454,453	1,186,878	-517,981	668,897
2013	11,844,104	9,536,957	2,307,146	9,296	1,527,688	788,755	1,727,135	2,515,890
2014r	12,894,345	10,131,001	2,763,344	12,123	1,602,971	1,172,496	-772,596	399,900
2015r	13,592,248	10,411,507	3,180,741	13,659	1,718,484	1,475,915	-232,839	1,243,076
2016r	13,498,200	10,094,256	3,403,945	11,889	1,743,258	1,672,575	628,895	2,301,470
<b>Annual % Change</b>								
2003	-14.6	0.0	-61.0	-1.0	3.0	s	s	s
2004	12.8	-1.4	128.6	31.1	-0.3	s	-46.1	98.3
2005	-1.3	5.4	-24.8	32.8	3.7	-74.0	-43.4	-60.6
2006	-1.6	2.9	-23.5	-24.7	1.0	s	s	s
2007	11.7	7.0	43.2	-25.0	3.7	s	s	s
2008	17.1	11.7	43.9	-1.3	3.5	255.8	s	s
2009	-8.4	-4.6	-22.9	-12.9	4.2	-64.6	s	s
2010	-3.5	0.4	-22.0	6.9	-0.9	s	s	s
2011	14.3	9.8	41.9	16.4	5.3	s	63.5	244.9
2012	16.1	9.7	46.5	-0.9	4.4	187.3	s	-28.8
2013	-0.9	2.4	-12.4	7.4	5.0	-33.5	s	276.1
2014r	8.9	6.2	19.8	30.4	4.9	48.7	s	-84.1
2015r	5.4	2.8	15.1	12.7	7.2	25.9	s	210.8
2016r	-0.7	-3.0	7.0	-13.0	1.4	13.3	s	85.1
<b>Annual Change in Number From Previous Year</b>								
2003	-1,214,181	2,741	-1,216,922	-84	32,909	-1,249,915	2,007,186	757,271
2004	911,741	-88,831	1,000,572	2,578	-3,855	1,007,005	-433,964	573,041
2005	-107,586	333,998	-441,583	3,569	42,030	-480,044	-220,138	-700,183
2006	-126,719	187,392	-314,112	-3,573	11,948	-329,633	-573,653	-903,284
2007	912,450	470,361	442,089	-2,722	44,157	395,209	-2,457	392,751
2008	1,487,006	844,299	642,707	-103	43,712	598,893	1,027,495	1,626,389
2009	-852,439	-368,982	-483,457	-1,040	53,299	-537,796	-1,362,401	-1,900,198
2010	-325,164	32,554	-357,719	486	-12,429	-344,804	945,924	601,120
2011	1,288,524	757,389	531,136	1,231	69,700	462,667	204,473	667,140
2012	1,656,387	821,102	835,285	-75	61,455	773,754	-1,044,417	-270,663
2013	-101,724	223,808	-325,533	643	73,235	-398,123	2,245,116	1,846,993
2014r	1,050,241	594,044	456,198	2,827	75,283	383,741	-2,499,731	-2,115,990
2015r	697,903	280,506	417,397	1,536	115,513	303,419	539,757	843,176
2016r	-94,048	-317,251	223,204	-1,770	24,774	196,660	861,734	1,058,394

r -revised s -per cent change suppressed

Source: Statistics Canada

Prepared by: Alberta Agriculture and Forestry, Economics and Competitiveness Branch, Statistics and Data Development Section

**Tab. 4 Farm Cash Receipts by Major Type, Canada and Selected Provinces (\$ Thousands), 2012-2016**

	Quebec	Ontario	Manitoba	Saskatchewan	Alberta	British Columbia	Canada
<b>Crops</b>							
<b>2012</b>	2,648,475	6,419,638	2,717,522	9,151,041	<b>6,476,214</b>	1,329,089	29,483,686
<b>2013</b>	2,753,811	6,516,298	3,468,338	9,711,738	<b>6,365,528</b>	1,388,472	30,996,302
<b>2014r</b>	2,643,189	6,283,991	3,259,922	9,850,628	<b>5,940,865</b>	1,482,560	30,249,647
<b>2015r</b>	2,703,346	6,369,734	3,189,818	11,218,967	<b>6,164,361</b>	1,558,978	32,008,531
<b>2016r</b>	3,182,387	6,701,987	3,598,308	11,423,285	<b>6,676,012</b>	1,570,644	33,992,808
<b>Annual % Change</b>							
<b>2014r</b>	-4.0	-3.6	-6.0	1.4	<b>-6.7</b>	6.8	-2.4
<b>2015r</b>	2.3	1.4	-2.2	13.9	<b>3.8</b>	5.2	5.8
<b>2016r</b>	17.7	5.2	12.8	1.8	<b>8.3</b>	0.7	6.2
<b>% Share of Canada in 2016</b>	9.4	19.7	10.6	33.6	<b>19.6</b>	4.6	100.0
<b>Livestock and Livestock Products</b>							
<b>2012</b>	4,927,966	5,325,825	1,934,279	1,687,909	<b>4,698,008</b>	1,375,426	20,875,337
<b>2013</b>	5,036,805	5,515,812	1,993,391	1,894,298	<b>4,782,214</b>	1,370,801	21,545,206
<b>2014r</b>	5,508,664	6,224,029	2,491,466	2,708,618	<b>6,404,262</b>	1,475,569	25,689,698
<b>2015r</b>	5,286,605	6,164,162	2,372,403	2,629,974	<b>6,775,254</b>	1,517,944	25,679,505
<b>2016r</b>	5,161,127	6,051,222	2,128,158	2,043,544	<b>6,125,766</b>	1,465,485	23,881,226
<b>Annual % Change</b>							
<b>2014r</b>	9.4	12.8	25.0	43.0	<b>33.9</b>	7.6	19.2
<b>2015r</b>	-4.0	-1.0	-4.8	-2.9	<b>5.8</b>	2.9	0.0
<b>2016r</b>	-2.4	-1.8	-10.3	-22.3	<b>-9.6</b>	-3.5	-7.0
<b>% Share of Canada in 2016</b>	21.6	25.3	8.9	8.6	<b>25.7</b>	6.1	100.0
<b>Direct Program Payments</b>							
<b>2012</b>	769,312	308,800	494,635	948,800	<b>771,606</b>	47,758	3,405,056
<b>2013</b>	505,658	350,153	370,949	654,803	<b>696,362</b>	44,432	2,685,507
<b>2014r</b>	321,057	297,782	231,201	611,628	<b>549,219</b>	30,588	2,120,698
<b>2015r</b>	201,381	315,003	304,505	585,455	<b>652,633</b>	36,700	2,134,784
<b>2016r</b>	393,079	361,320	221,804	666,624	<b>696,422</b>	29,659	2,442,172
<b>Annual % Change</b>							
<b>2014r</b>	-36.5	-15.0	-37.7	-6.6	<b>-21.1</b>	-31.2	-21.0
<b>2015r</b>	-37.3	5.8	31.7	-4.3	<b>18.8</b>	20.0	0.7
<b>2016r</b>	95.2	14.7	-27.2	13.9	<b>6.7</b>	-19.2	14.4
<b>% Share of Canada in 2016</b>	16.1	14.8	9.1	27.3	<b>28.5</b>	1.2	100.0
<b>Market Receipts (1)</b>							
<b>2012</b>	7,576,441	11,745,463	4,651,801	10,838,950	<b>11,174,222</b>	2,704,515	50,359,023
<b>2013</b>	7,790,616	12,032,110	5,461,729	11,606,036	<b>11,147,742</b>	2,759,273	52,541,508
<b>2014r</b>	8,151,853	12,508,020	5,751,388	12,559,246	<b>12,345,127</b>	2,958,129	55,939,345
<b>2015r</b>	7,989,951	12,533,896	5,562,221	13,848,941	<b>12,939,615</b>	3,076,922	57,688,036
<b>2016r</b>	8,343,514	12,753,209	5,726,466	13,466,829	<b>12,801,778</b>	3,036,129	57,874,034
<b>Annual % Change</b>							
<b>2014r</b>	4.6	4.0	5.3	8.2	<b>10.7</b>	7.2	6.5
<b>2015r</b>	-2.0	0.2	-3.3	10.3	<b>4.8</b>	4.0	3.1
<b>2016r</b>	4.4	1.7	3.0	-2.8	<b>-1.1</b>	-1.3	0.3
<b>% Share of Canada in 2016</b>	14.4	22.0	9.9	23.3	<b>22.1</b>	5.2	100.0
<b>Total Farm Cash Receipts</b>							
<b>2012</b>	8,345,754	12,054,263	5,146,436	11,787,750	<b>11,945,828</b>	2,752,273	53,764,079
<b>2013</b>	8,296,274	12,382,263	5,832,678	12,260,838	<b>11,844,104</b>	2,803,705	55,227,014
<b>2014r</b>	8,472,910	12,805,802	5,982,589	13,170,874	<b>12,894,345</b>	2,988,717	58,060,042
<b>2015r</b>	8,191,332	12,848,899	5,866,726	14,434,397	<b>13,592,248</b>	3,113,622	59,822,820
<b>2016r</b>	8,736,593	13,114,529	5,948,269	14,133,453	<b>13,498,200</b>	3,065,788	60,316,206
<b>Annual % Change</b>							
<b>2014r</b>	2.1	3.4	2.6	7.4	<b>8.9</b>	6.6	5.1
<b>2015r</b>	-3.3	0.3	-1.9	9.6	<b>5.4</b>	4.2	3.0
<b>2016r</b>	6.7	2.1	1.4	-2.1	<b>-0.7</b>	-1.5	0.8
<b>% Share of Canada in 2016</b>	14.5	21.7	9.9	23.4	<b>22.4</b>	5.1	100.0

r - revised

(1) Market receipts are the sum of crop and livestock and livestock product receipts. Program payments are not included.

Source: Statistics Canada

Prepared by: Alberta Agriculture and Forestry, Economics and Competitiveness Branch, Statistics and Data Development Section



**Tab. 5 Alberta Farm Cash Receipts by Detailed Type (\$ Thousands), 2016 and 2017 Quarterly**

	2016r				2017p				January-September		
	Jan-Mar	Apr-Jun	Jul-Sep	Oct-Dec	Jan-Mar	Apr-Jun	Jul-Sep	Oct-Dec	2016r	2017p	% Chg.
Wheat Excluding Durum.....	487,814	436,551	347,751	374,618	442,143	510,329	426,693	na	1,272,116	1,379,165	8.4
Wheat Excluding Durum, CWB.....	T	T	T	T	T	T	T	na	-	-	-
Total Wheat Excluding Durum.....	487,814	436,551	347,751	374,618	442,143	510,329	426,693	na	1,272,116	1,379,165	8.4
Durum Wheat.....	76,075	22,450	46,581	99,939	71,289	67,738	33,626	na	145,106	172,653	19.0
Durum Wheat, CWB.....	T	T	T	T	T	T	T	na	-	-	-
Total Durum Wheat.....	76,075	22,450	46,581	99,939	71,289	67,738	33,626	na	145,106	172,653	19.0
<b>Total All Wheat.....</b>	<b>563,889</b>	<b>459,001</b>	<b>394,332</b>	<b>474,557</b>	<b>513,432</b>	<b>578,067</b>	<b>460,319</b>	<b>na</b>	<b>1,417,222</b>	<b>1,551,818</b>	<b>9.5</b>
Oats.....	7,054	6,728	7,835	7,933	7,362	6,528	7,527	na	21,617	21,417	-0.9
Barley.....	93,079	76,709	40,352	56,232	67,636	70,371	57,958	na	210,140	195,965	-6.7
Barley, CWB.....	T	T	T	T	T	T	T	na	-	-	-
<b>Total Barley.....</b>	<b>93,079</b>	<b>76,709</b>	<b>40,352</b>	<b>56,232</b>	<b>67,636</b>	<b>70,371</b>	<b>57,958</b>	<b>na</b>	<b>210,140</b>	<b>195,965</b>	<b>-6.7</b>
Deferred Grain.....	-77,230	-97,738	-128,553	-343,376	-88,599	-101,329	-143,774	na	-303,521	-333,702	9.9
Liquidation of Deferred Grain.....	506,181	8,758	9,571	43,754	585,064	6,956	13,528	na	524,510	605,548	15.5
Total Deferments.....	428,951	-88,980	-118,982	-299,622	496,465	-94,373	-130,246	na	220,989	271,846	23.0
Rye.....	624	961	1,534	896	390	424	1,670	na	3,119	2,484	-20.4
Flaxseed.....	6,670	4,980	1,455	5,289	7,950	4,951	1,936	na	13,105	14,837	13.2
<b>Canola.....</b>	<b>717,701</b>	<b>768,925</b>	<b>541,325</b>	<b>823,046</b>	<b>833,136</b>	<b>755,733</b>	<b>651,494</b>	<b>na</b>	<b>2,027,951</b>	<b>2,240,363</b>	<b>10.5</b>
Corn.....	4,576	1,135	0	3,718	2,875	730	0	na	5,711	3,605	-36.9
Potatoes.....	74,474	68,398	37,518	59,841	56,621	80,434	35,194	na	180,390	172,249	-4.5
Greenhouse Vegetables.....	16,546	15,336	12,515	11,279	17,261	15,949	13,003	na	44,397	46,213	4.1
Field Vegetables.....	9,245	4,093	20,990	10,634	9,140	4,100	20,679	na	34,328	33,919	-1.2
Total Tree Fruits.....	6	5	107	12	6	5	114	na	118	125	5.9
Apples.....	x	x	x	x	x	x	x	na	-	-	-
Total Small Fruits.....	..	220	1,359	9	..	216	1,352	na	1,579	1,568	-0.7
Strawberries.....	..	220	660	..	..	216	649	na	880	865	-1.7
<b>Floriculture/Nursery/Sod.....</b>	<b>15,147</b>	<b>41,614</b>	<b>44,867</b>	<b>29,798</b>	<b>15,284</b>	<b>41,988</b>	<b>45,271</b>	<b>na</b>	<b>101,628</b>	<b>102,543</b>	<b>0.9</b>
Floriculture.....	15,147	18,801	14,084	18,403	15,284	18,971	14,211	na	48,032	48,466	0.9
Nursery.....	x	x	x	x	x	x	x	na	-	-	-
Sod.....	x	x	x	x	x	x	x	na	-	-	-
Mustard Seed.....	7,020	6,354	8,897	11,940	6,693	8,262	7,149	na	22,271	22,104	-0.7
Lentils.....	37,754	14,678	44,096	127,713	65,724	29,816	28,773	na	96,528	124,313	28.8
Dry Beans.....	3,950	4,098	10,611	14,101	6,603	6,683	12,187	na	18,659	25,473	36.5
<b>Dry Peas.....</b>	<b>150,389</b>	<b>159,126</b>	<b>159,126</b>	<b>232,451</b>	<b>200,489</b>	<b>58,600</b>	<b>168,678</b>	<b>na</b>	<b>309,515</b>	<b>427,767</b>	<b>38.2</b>
Chick Peas.....	1,714	1,307	2,331	2,540	4,670	2,422	5,448	na	5,352	12,540	134.3
Forage and Grass Seed.....	..	..	12,362	24,725	..	..	13,110	na	12,362	13,110	6.1
<b>Hay and Clover.....</b>	<b>43,199</b>	<b>41,893</b>	<b>38,965</b>	<b>38,241</b>	<b>41,738</b>	<b>38,095</b>	<b>41,654</b>	<b>na</b>	<b>124,057</b>	<b>121,487</b>	<b>-2.1</b>
Forest Products.....	615	922	154	1,383	635	952	159	na	1,691	1,746	3.3
Christmas Trees.....	..	..	..	2,065	..	..	..	na	-	-	-
Miscellaneous Crops (1).....	22,175	15,502	12,819	16,650	23,918	16,357	14,665	na	50,496	54,940	8.8
<b>TOTAL CROPS</b>	<b>2,204,776</b>	<b>1,541,241</b>	<b>1,274,567</b>	<b>1,655,428</b>	<b>2,378,027</b>	<b>1,626,310</b>	<b>1,458,093</b>	<b>na</b>	<b>5,020,584</b>	<b>5,462,430</b>	<b>8.8</b>
Cattle.....	1,201,506	1,144,109	1,154,352	1,048,867	1,132,814	1,277,542	1,209,494	na	3,499,967	3,619,850	3.4
Calves.....	5,841	2,535	2,295	22,918	5,554	4,146	1,863	na	10,671	10,567	-1.0
<b>Total Cattle and Calves.....</b>	<b>1,207,347</b>	<b>1,146,644</b>	<b>1,156,647</b>	<b>1,071,785</b>	<b>1,138,368</b>	<b>1,281,688</b>	<b>1,211,357</b>	<b>na</b>	<b>3,510,638</b>	<b>3,631,413</b>	<b>3.4</b>
Hogs.....	101,530	110,709	102,561	80,823	109,294	113,229	112,134	na	314,800	334,657	6.3
Sheep.....	x	x	x	x	104	81	111	na	-	-	-
Lambs.....	6,598	5,397	7,444	5,601	6,528	4,727	7,957	na	19,439	19,212	-1.2
<b>Dairy Products.....</b>	<b>137,304</b>	<b>145,294</b>	<b>140,938</b>	<b>137,519</b>	<b>143,043</b>	<b>149,369</b>	<b>144,141</b>	<b>na</b>	<b>423,536</b>	<b>436,553</b>	<b>3.1</b>
Poultry (Hens/Chickens/Turkeys).....	65,247	68,583	72,765	68,305	67,579	69,372	71,555	na	206,595	208,506	0.9
Total Eggs.....	22,271	22,767	22,865	22,979	23,706	23,617	24,423	na	67,903	71,746	5.7
<b>Honey.....</b>	<b>9,301</b>	<b>-</b>	<b>42,424</b>	<b>16,489</b>	<b>6,254</b>	<b>-</b>	<b>36,657</b>	<b>na</b>	<b>51,725</b>	<b>42,911</b>	<b>-17.0</b>
Furs.....	x	x	x	x	-	-	-	na	-	-	-
Miscellaneous Livestock.....	32,780	31,717	32,694	29,686	31,618	34,732	34,017	na	97,191	100,367	3.3
<b>TOTAL LIVESTOCK</b>	<b>1,582,640</b>	<b>1,531,327</b>	<b>1,578,521</b>	<b>1,433,278</b>	<b>1,526,538</b>	<b>1,676,893</b>	<b>1,642,382</b>	<b>na</b>	<b>4,692,488</b>	<b>4,845,813</b>	<b>3.3</b>
<b>MARKET RECEIPTS (2)</b>	<b>3,787,416</b>	<b>3,072,568</b>	<b>2,853,088</b>	<b>3,088,706</b>	<b>3,904,565</b>	<b>3,303,203</b>	<b>3,100,475</b>	<b>na</b>	<b>9,713,072</b>	<b>10,308,243</b>	<b>6.1</b>
AgriInvest.....	13,650	21,612	24,582	13,264	12,849	18,186	19,055	na	59,844	50,090	-16.3
AgriStability.....	12,571	8,379	14,836	20,428	11,804	28,268	31,263	na	35,786	71,335	99.3
Crop and Private Hail Insurance.....	158,621	10,694	259,825	99,830	142,993	37,466	200,387	na	429,140	380,846	-11.3
Crop Insurance.....	153,346	10,598	223,129	68,155	132,966	37,396	188,806	na	387,073	359,168	-7.2
Private Hail Insurance.....	5,275	96	36,696	31,675	10,027	70	11,581	na	42,067	21,678	-48.5
Other Payments.....	3,596	7,342	4,879	23,313	41,704	15,898	6,400	na	15,817	64,002	304.6
<b>DIRECT PROGRAM PAYMENTS</b>	<b>188,438</b>	<b>48,027</b>	<b>304,122</b>	<b>155,835</b>	<b>209,350</b>	<b>99,818</b>	<b>257,105</b>	<b>na</b>	<b>540,587</b>	<b>566,273</b>	<b>4.8</b>
<b>TOTAL FARM CASH RECEIPTS</b>	<b>3,975,854</b>	<b>3,120,595</b>	<b>3,157,210</b>	<b>3,244,541</b>	<b>4,113,915</b>	<b>3,403,020</b>	<b>3,357,579</b>	<b>na</b>	<b>10,253,659</b>	<b>10,874,514</b>	<b>6.1</b>

r - revised p - preliminary, subject to revision x - confidential T - series terminated .. not available na - data not yet available

- not applicable

(1) Includes receipts for sugar beets.

(2) Market receipts are the sum of crop and livestock and livestock product receipts. Program payments are not included.

Source: Statistics Canada

Prepared by: Alberta Agriculture and Forestry, Economics and Competitiveness Branch, Statistics and Data Development Section