

Agri-Food Exports

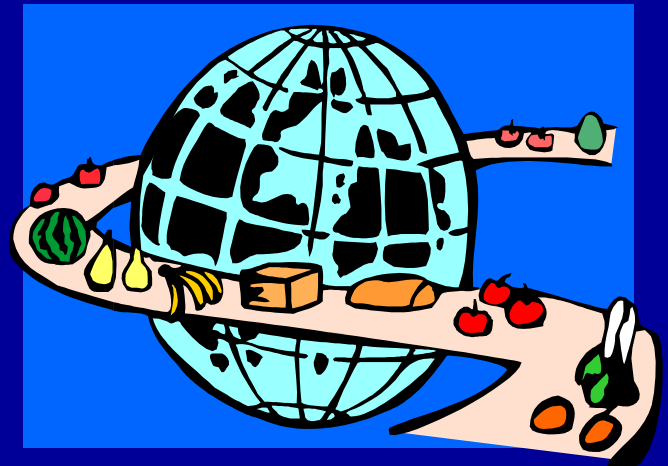
Alberta 2001 to 2010

Highlights on Alberta Agri-Food Exports in 2010

Tables:

Alberta Agri-Food Exports, 2001-2010:

- Top 5 Export Products and Markets
- All Products (Value and Quantity)
- Top 60 Markets
- Exports to the United States
- Exports to China
- Exports to Japan
- Exports to Mexico
- Exports to South Korea



Alberta Agri-Food Exports, 2001 to 2010 (1)

Table of Content	
	Page
Highlights on Alberta Agri-Food Exports in 2010	1
Tables	
Alberta Agri-Food Exports, Top Products and Markets, 2001-2010, Value	2
Alberta Agri-Food Exports by Product, 2001-2010, Value	3
Alberta Agri-Food Exports by Product, 2001-2010, Quantity	4
Alberta Agri-Food Exports by Country, 2001-2010, Value	5
Alberta Agri-Food Exports to the United States, 2001-2010, Value	6
Alberta Agri-Food Exports to China, 2001-2010, Value	7
Alberta Agri-Food Exports to Japan, 2001-2010, Value	8
Alberta Agri-Food Exports to Mexico, 2001-2010, Value	9
Alberta Agri-Food Exports to South Korea, 2001-2010, Value	10

(1) 2010 trade statistics are subject to revisions.

Note to Users: The contents of this document may not be used or reproduced without properly accrediting Alberta Agriculture and Rural Development (ARD), Economics and Competitiveness Division, Statistics and Data Development Branch.
If you require more information or have any questions regarding this document please contact: the Statistics and Data Development Branch (ARD), at 780-427-4011

Prepared by: Barbara Pekalski, Trade Research Statistician, phone: 780-427-5386, e-mail: barb.pekalski@gov.ab.ca
June 28, 2011

Alberta Agri-Food Exports in 2010

According to the latest trade statistics released by Statistics Canada, Alberta exports of primary and processed agricultural and food products (agri-food) declined 9.6 per cent to \$6.7 billion in 2010, from \$7.4 billion in 2009. Nationally, Alberta accounted for 19.2 per cent of total Canadian agri-food exports (\$35.8 billion). Alberta was the third largest exporter of agri-food products after Saskatchewan and Ontario.

Export Products

Exports of primary commodities (animals and crops), worth \$3.3 billion, were 22.6 per cent lower than in 2009, mainly due to declined exports of major grains and oilseeds. On the other hand, **value added exports** rose 7.6 per cent to \$3.5 billion in 2010. Meat continued to represent the majority of value added exports, followed by crude canola oil, french fries, oilseed cake and meal, and malt.

In the crop sector, export revenue and volume of grains and oilseeds declined for the second straight year, compared to the record in 2008. Alberta's wheat exports fell 19.5 per cent to 5.5 million tonnes, while the value declined 32.7 per cent from a year earlier, to \$1.4 billion in 2010. Major markets for wheat were the United States, Bangladesh, Japan, Sri Lanka and Mexico. As well, barley exports were down in both value and quantity. The value fell by 50.0 per cent and quantity was down 42.0 per cent. The top buyers of Alberta's barley in 2010 were China, the United States, Saudi Arabia and Japan. Exports of canola seed fell 18.7 per cent in quantity to 2.2 million tonnes, and the value declined 18.3 per cent to \$996 million. In 2010, Japan remained the largest export market for canola seed, followed by China, Mexico, United Arab Emirates and Pakistan.

In the livestock sector, contrary to crops, exports of live animals and meat were up in 2010. Exports of live cattle rose 12.7 per cent to \$525 million in 2010, and the number of head was up 14.4 per cent to 452,965. Larger shipments to the United States contributed to the increase. Exports of live hogs were also higher, up about 4.0 per cent in value and 2.0 per cent in quantity. As well, meat exports posted gains in 2010. Beef sales increased 9.9 per cent to \$1.1 billion, from \$957 million in 2009, while quantity rose 3.7 per cent to 307,241 tonnes. Larger exports of beef were reported for the United States, Mexico, Japan, Hong Kong and Russia. Pork exports rose 8.5 per cent to \$392 million, and quantity was up 4.4 per cent to 129,331 tonnes. As in previous years, Japan was the number one customer of Alberta pork. On a less positive note, horse meat, the third largest meat exports, declined in both, value and quantity.

Other products showing substantial gains in 2010 exports were dairy products, dried peas, beer, prepared animal feed, tallow and crude canola oil.

Trading Partners

The leading export markets for Alberta agri-food products in 2010 were the United States, China, Japan, Mexico and South Korea. Exports to these five countries were worth \$5.4 billion, representing 79.6 per cent of Alberta's total agri-food exports.

The United States remains Alberta's largest trading partner accounting for 36.2 per cent of Alberta total agri-food exports. In comparison, this share was 44.8 per cent five years ago (2006). In 2010, exports to this market, at \$2.4 billion, were 10.1 per cent lower than in 2009. Declines in exports were reported for grains and oilseeds, due to lower volume and weak prices. Wheat, barley and canola seed, each fell in quantity and value. Partially offsetting these declines were higher revenue from exports of live cattle, hogs, tallow, prepared animal feed, raw hides and skins, pork and beef. The United States continues to be Alberta's sole export market for live cattle and hogs (non-purebred), and accounts for almost 74.0 per cent of Alberta's beef exports by volume.

Exports to China, Alberta's second largest export market in 2010 rose 4.4 per cent to \$1.0 billion, from a year earlier. Major exports to this market in 2010 were crude canola oil, canola seed, oilseed cake and meal, and raw hides and skins. These four products made up 74.5 per cent of Alberta's total agri-food exports to China. Among these products, canola seed declined 60.0 per cent in value and quantity, while the other products showed increases. It is worth noting, that China was the largest single buyer of Alberta crude canola oil (97 per cent of total).

Exports to Japan, which ranked the third largest export destination in 2010, fell 10.0 per cent to \$828 million, from \$919 million in 2009. Lower exports of canola seed, wheat, barley and hay contributed to the decline. Moderating these declines were higher exports of beef, pork, honey and prepared animal feed. Beef exports continued to grow for the fourth consecutive year, reaching \$64 million in 2010 (up 35.9 per cent). In terms of value, canola seed (\$287 million) and pork (\$203 million) remained the largest exports, accounting for 59.0 per cent of Alberta's total agri-food exports to Japan.

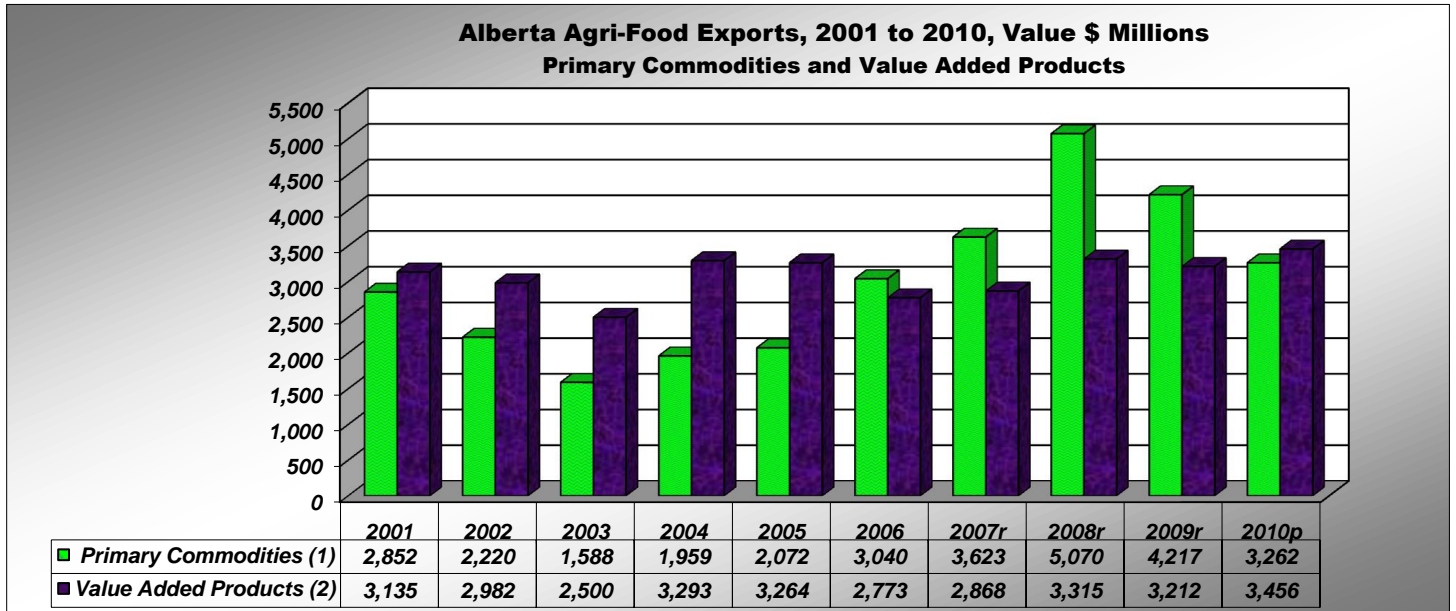
Exports to Mexico, Alberta's fourth largest market grew 5.0 per cent to \$460 million in 2010. Exports of canola seed (\$193 million) and beef (\$153 million) continued to account for the majority of Alberta's exports to this market. In terms of value, both exports increased, 16.8 per cent and 11.0 per cent, respectively. Also, pork exports almost doubled in value to \$7.5 million. Moderating these increases, were lower exports of wheat and refined canola oil.

South Korea was Alberta's fifth largest market in 2010. Exports to this market grew by 24.4 per cent to \$146 million, mainly due to large purchases of wheat. Wheat exports more than tripled, from \$20.0 million in 2009, to \$71 million in 2010. Other major exports to this market were pork, crude canola oil and raw hides and skins.

Overall, agri-food exports in 2010 were more favorable for livestock products than for crops, especially when compared to a record high exports in 2008.

Alberta Agri-Food Exports, Top Products and Markets, 2001 - 2010, Value

	2001	2002	2003	2004	2005	2006	2007r	2008r	2009r	2010p	2010/2009
Millions of Dollars											% Change
Total Agri-Food Exports	5,987	5,202	4,088	5,252	5,336	5,813	6,491	8,386	7,429	6,718	-9.6
Primary Commodities (1)	2,852	2,220	1,588	1,959	2,072	3,040	3,623	5,070	4,217	3,262	-22.6
<i>% of Total</i>	47.6	42.7	38.8	37.3	38.8	52.3	55.8	60.5	56.8	48.6	
Value Added Products (2)	3,135	2,982	2,500	3,293	3,264	2,773	2,868	3,315	3,212	3,456	7.6
<i>% of Total</i>	52.4	57.3	61.2	62.7	61.2	47.7	44.2	39.5	43.2	51.4	
Top Export Products (3)	Millions of Dollars										% Change
1. Wheat	1,135	780	737	1,043	834	1,190	1,422	2,398	2,093	1,410	-32.7
2. Beef (Fresh, Chilled, Frozen, Incl. Offal)	1,715	1,643	1,088	1,525	1,416	916	888	1,069	957	1,052	9.9
3. Canola Seed	441	405	329	455	511	716	944	1,493	1,220	996	-18.3
4. Live Cattle (Excl. Purebred)	712	634	196	-	271	690	702	542	465	525	12.7
5. Canola Oil (Crude)	4	19	66	215	198	171	333	255	409	644	57.2
Top 5 Products	4,008	3,481	2,417	3,238	3,230	3,684	4,288	5,758	5,145	4,626	-10.1
<i>% of Total</i>	66.9	66.9	59.1	61.7	60.5	63.4	66.1	68.7	69.3	68.9	
Top Export Markets (3)	Millions of Dollars										% Change
1. United States	3,288	3,035	2,019	2,302	2,496	2,607	2,697	3,213	2,704	2,431	-10.1
<i>% of Total</i>	54.9	58.3	49.4	43.8	46.8	44.8	41.5	38.3	36.4	36.2	
2. China	281	76	97	452	350	234	468	624	987	1,030	4.4
3. Japan	781	794	671	776	829	786	907	1,196	919	828	-10.0
4. Mexico	410	363	246	525	394	398	456	606	438	460	5.0
5. South Korea	94	98	67	64	173	123	118	149	117	146	24.4
Top 5 Markets	4,854	4,365	3,101	4,118	4,242	4,148	4,645	5,787	5,165	4,895	-5.2
<i>% of Total</i>	81.1	83.9	75.9	78.4	79.5	71.3	71.6	69.0	69.5	72.9	



(1) Primary commodities refer to animal and crops.

(2) Value added products refer to products and by-products of manufacture (meats, cereal preparations, animal feed, oils and fats, beverages and other food products). This category also include crude animal and plant products (peat moss, nursery, hides and skins).

(3) Top products and markets are ranked by the 2010 year.

r - revised p - preliminary

Source: Statistics Canada. World Trade Atlas

Prepared by: Alberta Agriculture and Rural Development, Economics and Competitiveness Division, Statistics and Data Development Branch

Alberta Agri-Food Exports by Product, 2001 - 2010, Value

	2001	2002	2003	2004	2005	2006	2007r	2008r	2009r	2010p	2010/2009
	Millions of Dollars										% Change
Total Agri-Food Exports	5,987.2	5,201.9	4,087.6	5,251.5	5,336.3	5,813.4	6,491.5	8,385.9	7,428.8	6,718.5	-9.6
Animals and Crops	2,852.5	2,220.2	1,588.0	1,958.9	2,072.4	3,040.0	3,623.1	5,070.5	4,216.7	3,262.4	-22.6
Purebred Cattle	0.1	1.5	0.1	-	-	-	6.1	0.4	0.8	0.1	-81.8
Other Cattle (Excl. Purebred)	711.8	634.3	196.1	-	271.2	690.3	702.1	542.3	465.3	524.6	12.7
Live Hogs	123.7	75.7	54.3	72.7	68.9	55.6	53.8	50.0	38.7	40.2	4.0
Other Live Animals	27.5	28.6	19.8	20.6	32.0	37.8	35.7	35.0	30.0	28.4	-5.2
Barley	123.8	68.9	64.2	123.7	112.1	83.6	157.2	323.9	146.9	73.4	-50.0
Wheat	1,135.0	780.4	737.1	1,043.1	833.6	1,189.9	1,421.7	2,398.5	2,093.1	1,409.6	-32.7
Oats	30.6	10.3	8.5	13.4	38.5	37.8	44.2	25.4	23.3	17.5	-24.7
Other Cereals Unmilled	5.5	5.5	4.8	21.2	7.1	9.9	16.8	9.8	8.9	6.7	-25.4
Hay and Fodder (Incl. Dehy Alfalfa Cubes)	80.7	96.7	73.6	97.3	96.9	106.2	129.8	88.3	79.9	51.7	-35.3
Peas, Dried	103.0	28.3	31.4	28.7	12.3	26.1	23.2	8.4	7.4	26.5	257.8
Lentils	7.1	3.2	1.7	5.3	7.8	10.0	7.9	5.5	8.7	9.2	5.2
Other Dried Beans	30.4	32.6	23.8	30.6	32.3	30.0	28.9	27.3	22.3	15.2	-31.8
Potatoes, Seed and Other	12.9	26.5	15.6	16.6	16.5	18.3	16.0	3.8	8.9	8.8	-1.5
Vegetables and Fruits	1.4	5.1	12.5	12.2	11.6	12.7	14.9	13.5	16.0	18.6	16.6
Canola Seed	440.9	404.6	328.9	455.1	511.3	716.0	943.7	1,493.3	1,219.8	996.2	-18.3
Mustard Seed	11.9	10.3	10.4	13.4	10.2	8.5	15.4	31.0	37.1	26.2	-29.3
Linseed	5.9	7.0	5.0	4.8	9.7	6.4	5.3	12.8	8.0	8.8	9.1
Other Oilseeds/Oilnuts/Kernels	0.1	0.6	0.1	0.3	0.5	0.9	0.5	1.1	1.5	0.7	-55.8
Crude Animal and Plant Products	236.4	243.9	214.5	225.8	312.4	291.4	336.8	325.9	248.7	264.0	6.1
Raw Hides and Skins	120.8	126.3	129.7	132.4	198.3	160.8	191.1	178.2	102.6	128.7	25.4
Fur Skins Undressed	0.1	0.2	0.0	0.1	0.0	0.1	0.1	0.0	0.0	0.0	220.1
Bovine Semen	10.4	13.9	12.4	14.0	16.1	25.2	23.4	23.3	27.2	27.7	1.9
Other Crude Animal Products	28.0	30.2	15.3	13.4	21.0	18.2	22.9	29.2	28.9	29.5	1.9
Seeds for Sowing	37.6	30.8	26.8	33.9	31.6	41.4	51.9	48.3	35.3	25.5	-27.7
Nursery Stock	0.9	0.7	0.6	0.3	0.4	0.3	0.4	0.4	0.3	0.3	6.4
Peat Moss	37.9	40.8	27.8	29.7	42.4	39.5	44.9	43.1	51.2	48.0	-6.3
Other Crude Vegetable Products	0.8	1.0	1.9	2.0	2.6	5.9	2.0	3.3	3.1	4.3	37.9
Products of Manufacture	2,898.4	2,737.8	2,285.0	3,066.8	2,951.5	2,482.0	2,531.5	2,989.6	2,963.4	3,192.1	7.7
Beef (Fresh, Chilled, Frozen, Incl. Offal)	1,715.4	1,642.6	1,088.5	1,525.0	1,416.0	916.4	888.0	1,068.7	956.9	1,051.7	9.9
Pork (Fresh, Chilled, Frozen, Incl. Offal)	218.3	191.8	253.0	357.7	465.4	423.7	345.8	342.1	361.1	391.6	8.5
Horse Meat (Fresh, Chilled, Frozen, Incl. Offal)	65.4	51.6	44.6	47.9	48.3	44.1	47.7	52.7	60.3	49.2	-18.5
Other Meat (Fresh, Chilled, Frozen, Incl. Offal)	9.8	10.1	8.8	16.9	19.2	13.5	11.4	15.6	14.8	14.5	-1.8
Processed Meats	14.7	22.5	13.8	10.9	5.2	2.8	5.4	2.7	3.6	3.2	-11.4
Dairy Produce	11.6	10.9	10.2	5.3	3.1	2.8	8.4	4.0	0.4	3.1	686.6
Eggs	0.0	0.0	0.4	0.3	0.9	1.7	4.6	0.1	-	-	-
Honey	5.2	16.6	17.9	12.8	8.3	4.9	7.0	18.5	16.9	15.5	-8.2
Wheat or Meslin Flour	7.9	13.5	9.9	12.2	9.8	8.4	10.9	19.0	22.1	15.7	-29.0
Malt Roasted or not Roasted	129.5	118.1	107.7	106.2	94.5	96.5	136.7	244.0	223.5	142.7	-36.1
Other Cereals, Milled	19.4	23.4	22.2	19.4	21.8	41.6	25.9	32.7	37.2	28.5	-23.3
Cereal Preparations	62.9	64.2	54.6	35.3	38.0	39.8	37.8	40.2	42.5	38.9	-8.4
Vegetable and Fruit Preparations	3.1	4.0	3.1	2.2	2.6	3.5	7.9	9.7	7.9	5.0	-37.2
Fruit and Vegetable Juices	1.4	1.5	4.9	9.4	10.1	8.1	8.8	9.5	9.3	8.2	-11.7
Processed Potatoes	163.5	173.6	147.6	231.2	204.1	234.3	239.1	235.2	261.3	191.4	-26.8
Sugar and Sugar Preparations	4.6	10.3	7.6	16.1	25.7	38.7	14.5	31.9	12.2	14.6	19.8
Other Food/Food Materials	37.7	46.9	47.3	38.8	39.8	35.8	35.9	37.6	38.1	35.6	-6.5
Oilseed Cake and Meal	109.2	76.5	126.4	151.7	113.6	99.1	96.0	145.9	146.1	164.3	12.5
Alfalfa Meal and Pellets	39.8	13.4	10.8	20.7	11.7	11.5	4.6	0.1	0.0	0.0	-68.9
Other Feeds of Vegetable Origin	2.2	2.8	3.0	6.1	4.3	4.0	4.6	3.0	7.5	6.3	-16.6
Animal Feed Preparations	31.5	44.4	33.5	27.5	31.2	26.5	41.3	48.3	68.2	115.5	69.2
Whiskey	40.0	37.6	41.3	39.0	36.9	36.2	34.5	39.2	39.3	42.8	8.9
Beer	0.3	6.0	4.7	2.2	2.1	1.2	1.1	1.5	1.3	3.0	127.6
Other Beverages (Excl. Fruit Juices)	34.1	22.1	20.4	21.3	18.0	17.3	17.1	20.8	36.2	29.6	-18.4
Tobacco	-	-	-	0.1	-	0.0	-	-	-	-	-
Tallow	17.8	9.7	11.1	18.0	18.3	8.9	16.4	32.9	17.9	29.5	64.8
Canola/Mustard Oil - Crude	4.4	19.2	66.1	214.9	197.7	171.0	332.5	255.0	409.4	643.7	57.2
Canola/Mustard Oil - Refined	113.9	66.7	91.1	77.3	76.5	157.1	122.7	232.0	136.1	112.3	-17.5
Other Oils, Fats and Waxes	34.3	37.3	34.5	40.2	28.3	32.6	25.0	46.8	33.0	35.6	7.8
Other Products	0.5	0.4	0.0	0.1	-	-	0.0	-	-	0.0	-

r - revised p - preliminary

Source: Statistics Canada, World Trade Atlas

Prepared by: Alberta Agriculture and Rural Development, Economics and Competitiveness Division, Statistics and Data Development Branch

Alberta Agri-Food Exports by Product, 2001 - 2010, Quantity

	2001	2002	2003	2004	2005	2006	2007r	2008r	2009r	2010p	2010/2009
											% Change
Live Animals	Number										
Purebred Cattle	110	263	43	-	-	-	2,002	56	85	95	11.76
Other Cattle (Excl Purebred)	513,033	511,615	139,710	-	213,472	562,839	589,618	463,272	395,970	452,965	14.39
Live Hogs	732,113	558,481	425,303	537,435	627,854	579,487	602,956	611,515	536,839	546,086	1.72
Meat	Tonnes										% Change
Beef (Fresh, Chilled, Frozen, Incl. Offal)	368,180	381,200	238,943	359,338	352,716	262,101	267,421	316,523	296,377	307,241	3.67
Pork (Fresh, Chilled, Frozen, Incl. Offal)	61,430	65,536	91,671	110,830	152,131	159,132	130,679	116,623	123,851	129,331	4.42
Horse Meat (Fresh/Chilled/Frozen, Incl. Offal)	11,244	8,586	9,126	9,864	9,764	8,426	6,891	6,461	5,914	6,990	18.18
Other Meat (Fresh/Chilled/Frozen, Incl. Offal)	3,483	5,217	1,946	4,411	5,868	8,793	9,738	9,991	10,514	8,709	-17.17
Processed Meats	3,992	5,546	3,089	2,517	1,610	718	992	810	743	709	-4.52
Crops											
Barley	563,697	300,698	289,372	623,317	647,799	470,711	633,519	1,009,681	523,893	303,706	-42.03
Wheat	5,179,030	3,150,892	3,011,712	4,476,569	4,253,923	5,973,511	5,352,937	5,521,386	6,853,538	5,520,112	-19.46
Oats	180,875	42,554	44,115	80,292	232,416	212,711	208,495	95,435	102,533	80,596	-21.40
Other Cereals Unmilled	22,373	16,014	12,100	101,354	31,373	48,105	66,865	21,390	26,569	26,739	0.64
Hay and Fodder (Incl. Dehy Alfalfa Cubes)	258,877	264,644	218,294	330,303	335,093	396,885	453,492	285,200	235,978	223,296	-5.37
Potatoes, Seed and Other	34,706	69,692	41,839	54,025	50,875	53,312	46,172	11,525	22,795	25,473	11.75
Vegetables and Fruits	1,235	3,157	9,210	7,363	7,898	8,062	10,017	6,947	8,862	8,720	-1.60
Peas, Dried	381,674	79,539	83,191	112,918	45,630	80,516	71,485	13,216	13,535	97,402	619.63
Lentils	16,617	6,778	2,962	10,194	15,851	24,930	15,266	5,949	10,499	10,878	3.61
Other Dried Beans	42,656	30,693	33,974	46,405	44,570	48,187	40,807	30,369	22,989	18,721	-18.56
Canola Seed	1,345,386	998,600	821,229	1,152,099	1,572,876	2,262,911	2,230,870	2,564,493	2,692,978	2,189,621	-18.69
Mustard Seed	27,623	18,922	18,094	23,471	18,419	18,499	25,347	28,982	32,039	31,214	-2.58
Linseed	18,670	17,500	12,202	10,954	21,131	19,789	13,671	17,667	15,173	18,752	23.59
Other Oilseeds/Oilnuts/Kernels	283	1,366	222	696	649	1,359	781	1,900	1,810	942	-47.96
Other Products											
Dairy Produce	4,482	5,315	4,401	2,183	1,187	1,141	2,145	1,312	127	1,162	816.69
Honey	2,082	3,959	3,768	2,987	3,565	2,177	3,038	6,200	4,261	4,110	-3.54
Wheat or Meslin Flour	16,124	28,743	20,616	26,312	21,802	19,280	22,867	27,414	37,872	29,342	-22.52
Malt Roasted or not Roasted	271,299	243,753	219,755	238,960	257,326	94,781	52,307	42,638	62,936	61,640	-2.06
Other Cereals, Milled	43,206	43,270	46,490	48,620	58,060	17,913	15,842	16,397	16,443	13,684	-16.78
Cereal Preparations	26,081	25,002	20,318	13,045	16,750	270,389	355,812	399,476	313,013	273,084	-12.76
Vegetable and Fruit Preparations	595	922	865	561	808	905	2,223	2,491	1,949	1,778	-8.79
Processed Potatoes	128,120	141,992	133,486	230,894	206,624	227,840	227,347	214,628	211,420	173,424	-17.97
Oilseed Cake and Meal	487,121	346,974	579,455	616,108	572,532	604,098	624,790	695,165	639,668	810,617	26.72
Alfalfa Meal and Pellets	192,877	53,723	49,950	94,974	55,119	53,549	22,236	217	118	34	-71.19
Other Feeds of Vegetable Origin	12,989	11,952	13,646	33,927	25,331	23,326	26,014	25,954	29,169	29,893	2.48
Animal Feed Preparations	82,507	89,123	66,403	45,885	39,673	38,563	43,298	47,360	53,703	111,804	108.19
Tallow	46,383	21,400	22,306	37,999	42,126	18,697	25,228	38,895	26,664	40,637	52.40
Canola/Mustard Oil - Crude	7,520	24,142	79,069	281,206	284,868	241,317	391,471	192,038	452,929	653,533	44.29
Canola/Mustard Oil - Refined	149,773	80,758	90,268	75,380	82,789	179,127	105,992	162,008	111,245	105,181	-5.45
Other Oils, Fats and Waxes	34,801	31,878	23,686	28,658	19,011	19,154	16,494	28,601	15,582	15,825	1.56
Seeds for Sowing	18,177	18,574	18,415	20,820	21,543	29,465	30,583	24,308	15,465	13,541	-12.44
Peat Moss	99,275	116,168	95,966	111,275	142,449	150,847	182,132	206,995	170,616	181,744	6.52
	Litres										% Change
Fruit and Vegetable Juices	1,014,407	1,542,173	4,968,804	12,667,364	15,156,972	11,886,142	20,662,479	28,432,616	19,068,005	11,795,011	-38.14
Beer	154,611	7,636,714	7,082,834	4,493,857	4,144,668	2,343,673	2,187,950	2,993,385	2,290,336	5,408,106	136.13
Whiskey (LPA)*	14,619,855	14,398,856	16,131,993	14,746,209	13,506,091	13,613,718	21,277,590	28,558,583	30,235,158	33,148,502	9.64

*(Litres of Proof Alcohol)

r - revised

p - preliminary

Source: Statistics Canada, World Trade Atlas

Prepared by: Alberta Agriculture and Rural Development, Economics and Competitiveness Division, Statistics and Data Development Branch

Alberta Agri-Food Exports by Country, 2001 - 2010, Value

	2001	2002	2003	2004	2005	2006	2007r	2008r	2009r	2010p	2010/2009
	Millions of Dollars										% Change
All Countries (Total)	5,987.2	5,201.9	4,087.6	5,251.5	5,336.3	5,813.4	6,491.5	8,385.9	7,428.8	6,718.5	-9.6
1 United States	3,288.2	3,035.2	2,019.4	2,301.9	2,495.7	2,606.7	2,697.2	3,213.0	2,703.7	2,431.2	-10.1
<i>% of Total</i>	54.9	58.3	49.4	43.8	46.8	44.8	41.5	38.3	36.4	36.2	
3 China	281.0	76.2	97.0	451.8	349.7	233.9	467.6	623.6	986.7	1,030.2	4.4
<i>% of Total</i>	13.0	15.3	16.4	14.8	15.5	13.5	14.0	14.3	12.4	12.3	
2 Japan	781.1	793.5	670.6	776.1	829.1	786.1	906.6	1,195.6	919.3	827.6	-10.0
<i>% of Total</i>	4.7	1.5	2.4	8.6	6.6	4.0	7.2	7.4	13.3	15.3	
4 Mexico	409.9	362.7	246.4	524.8	394.3	398.2	455.6	606.2	438.1	460.1	5.0
5 Korea, South	94.1	97.7	67.3	63.6	173.0	122.8	118.3	148.6	117.5	146.2	24.4
6 Bangladesh	38.4	7.7	13.1	12.1	9.4	25.3	86.7	60.9	116.6	131.3	12.7
7 United Arab Emirates	14.6	10.5	12.3	16.6	7.8	60.2	71.1	116.0	90.0	123.3	37.1
8 Pakistan	2.3	0.1	53.1	6.4	32.0	82.0	86.1	125.1	61.9	99.0	60.0
9 Indonesia	47.1	44.4	25.6	52.0	65.8	109.5	142.8	195.8	113.3	95.1	-16.1
10 Hong Kong	25.9	23.9	24.7	43.6	83.8	63.5	70.4	64.9	55.7	84.9	52.6
11 Sri Lanka	3.6	-	6.9	7.4	35.9	85.5	69.8	124.3	96.9	83.9	-13.4
12 Saudi Arabia	9.3	1.9	18.3	27.2	17.5	19.2	56.6	112.4	167.6	72.4	-56.8
13 Venezuela	58.3	44.5	35.5	52.0	33.2	48.7	46.2	115.3	100.4	70.2	-30.0
14 Peru	26.9	21.8	13.7	19.4	26.0	41.1	37.8	49.8	77.5	65.0	-16.1
15 Italy	40.0	32.0	78.1	73.9	52.7	47.0	58.6	70.2	84.3	64.8	-23.2
16 Taiwan	60.5	85.3	96.1	66.9	83.5	70.0	84.1	70.6	64.6	58.3	-9.7
17 Colombia	50.9	40.4	21.3	50.7	25.4	36.6	50.8	48.9	61.9	57.5	-7.1
18 Iraq	0.0	-	0.0	-	-	44.5	75.2	46.8	168.3	52.1	-69.1
19 Philippines	56.5	35.8	39.7	57.9	31.8	18.1	58.5	56.5	77.5	50.9	-34.3
20 Russia	4.3	9.9	6.0	2.1	8.3	24.0	16.7	24.9	20.4	48.3	136.3
21 Ecuador	19.7	13.7	17.1	23.3	25.6	24.4	32.0	38.8	45.6	38.0	-16.7
22 Brazil	7.3	6.9	11.7	3.1	13.6	19.1	47.1	66.1	45.0	36.8	-18.2
23 Australia	2.5	6.1	10.6	15.5	24.3	27.0	19.3	26.8	29.0	35.0	20.5
24 United Kingdom	30.2	27.8	25.8	26.5	35.1	37.4	54.1	69.2	48.2	33.2	-31.0
25 Sudan	13.6	13.4	9.2	12.0	11.6	17.8	61.4	72.7	32.4	31.6	-2.5
26 South Africa	12.5	17.4	14.9	21.1	14.8	27.6	48.7	57.6	23.8	29.9	25.3
27 Ghana	12.0	12.9	7.1	12.4	15.4	14.6	16.5	33.8	34.0	29.4	-13.5
28 Egypt	20.9	0.6	7.8	0.1	0.2	45.1	9.1	34.7	16.4	29.3	78.0
29 Algeria	35.0	54.7	54.3	44.4	17.4	19.7	27.4	109.1	29.3	27.6	-5.7
30 Belgium	27.1	18.9	28.4	29.5	20.8	20.3	25.4	35.2	26.1	24.6	-5.7
31 France	27.6	22.4	27.4	26.2	23.5	22.4	23.7	29.2	33.8	24.5	-27.6
32 Cuba	15.2	6.5	9.7	10.2	14.5	8.6	11.9	31.5	22.4	21.7	-3.4
33 Morocco	39.8	26.4	27.4	29.5	23.8	20.5	27.1	38.3	49.6	20.6	-58.5
34 Nigeria	22.1	15.5	7.3	10.6	13.9	19.8	2.3	5.3	27.8	17.4	-37.4
35 Switzerland	14.0	16.9	9.9	11.6	14.2	13.7	13.6	22.1	21.2	17.1	-19.4
36 Jamaica	14.6	15.0	6.0	18.8	13.7	10.9	22.4	31.1	9.1	15.8	74.7
37 Chile	19.1	10.3	8.6	11.8	7.0	11.7	13.6	40.2	44.0	15.8	-64.2
38 Portugal	0.5	0.6	0.8	4.4	0.4	1.8	1.0	0.5	18.5	15.5	-15.8
39 Singapore	4.4	3.5	3.9	62.5	12.1	6.9	12.5	9.8	13.0	15.4	18.2
40 Malaysia	14.8	18.9	16.6	21.2	22.2	40.0	38.7	69.6	22.0	14.8	-32.7
41 Thailand	32.4	34.2	23.2	15.3	3.4	18.5	39.8	23.4	21.8	14.4	-34.0
42 Vietnam	3.8	2.7	2.5	5.2	40.3	36.0	50.5	37.2	7.5	12.5	66.9
43 Germany	2.8	4.3	11.7	20.3	24.1	72.1	28.2	13.2	16.7	10.6	-36.7
44 Netherlands	2.4	3.3	4.3	6.9	13.9	74.4	25.4	13.7	17.0	9.8	-42.5
45 Dominican Republic	3.8	1.1	6.2	8.4	8.3	7.0	5.9	8.4	14.3	9.5	-33.4
46 New Zealand	4.8	2.8	4.0	4.1	5.4	4.3	4.4	8.7	9.5	8.9	-6.1
47 Spain	29.9	7.0	23.0	21.9	16.4	17.7	14.3	19.7	27.3	8.9	-67.5
48 India	41.0	21.1	16.4	3.4	4.8	85.3	37.5	1.8	3.2	8.4	167.2
49 Czech Republic	1.5	2.6	3.3	6.0	5.8	3.9	4.9	8.5	6.4	7.2	11.0
50 Costa Rica	0.6	0.2	3.5	6.0	6.3	5.8	5.1	7.3	5.8	7.1	22.0
51 Cameroon	8.4	3.2	3.5	2.3	3.8	0.9	3.8	5.2	8.2	6.1	-25.9
52 Denmark	0.5	2.2	1.3	2.6	3.6	2.6	2.4	4.9	5.2	6.0	16.1
53 Guatemala	27.7	14.4	13.1	22.7	16.7	5.0	6.4	8.4	9.2	5.4	-41.6
54 Tunisia	7.2	20.8	19.5	2.6	4.6	5.4	5.3	9.6	14.4	5.0	-65.4
55 Guyana	0.0	0.0	0.1	0.6	1.3	2.5	4.2	2.2	5.4	4.0	-25.4
56 Tanzania	-	0.9	-	2.4	-	1.7	3.4	-	-	3.9	-
57 Senegal	1.9	1.7	0.1	0.3	0.4	1.0	2.4	3.2	3.4	3.0	-12.4
58 Hungary	0.1	0.5	0.6	0.6	1.2	1.0	1.1	1.4	2.6	2.7	2.1
59 Sweden	0.5	0.4	0.3	0.5	0.2	0.4	0.7	1.6	1.9	2.6	38.6
60 Turkey	2.4	1.1	7.7	10.3	2.6	11.9	1.7	30.0	4.9	2.6	-46.4
All Other	170.1	45.4	93.9	107.9	94.2	123.7	79.5	286.7	130.9	33.6	-74.3

r - revised p - preliminary

Source: Statistics Canada. World Trade Atlas

Prepared by: Alberta Agriculture and Rural Development, Economics and Competitiveness Division, Statistics and Data Development Branch

Alberta Agri-Food Exports to the United States, 2001 - 2010, Value

	2001	2002	2003	2004	2005	2006	2007r	2008r	2009p	2010p	2010/2009
	Millions of Dollars										% Change
Agri-Food Exports to U.S	3,288.2	3,035.2	2,019.4	2,301.9	2,495.7	2,606.7	2,697.2	3,213.0	2,703.7	2,431.2	-10.1
Animals and Crops	1,136.6	969.5	370.6	274.6	538.4	1,042.2	1,171.5	1,390.9	1,031.9	903.3	-12.5
Purebred Cattle	0.1	0.1	-	-	-	-	-	0.1	0.2	0.1	-57.4
Other Cattle (Excl. Purebred)	711.8	634.3	196.0	-	271.2	690.3	702.1	542.3	465.3	524.6	12.7
Live Hogs	123.6	75.7	54.1	72.4	68.8	54.8	53.8	49.9	38.4	40.2	4.7
Other Live Animals (Bison, Horses, Poultry)	23.3	26.0	15.0	13.5	18.3	22.3	21.1	22.7	22.4	18.7	-16.6
Barley	43.7	38.8	18.2	30.6	6.1	10.3	35.2	103.4	54.1	13.7	-74.7
Wheat	123.5	91.0	10.3	28.1	21.5	79.3	143.6	364.0	252.5	150.2	-40.5
Oats	29.0	10.0	8.3	13.0	37.2	35.9	39.9	24.5	22.5	16.9	-25.1
Other Cereals Unmilled	3.7	3.8	4.2	11.7	5.0	5.7	7.2	6.4	5.0	4.6	-8.0
Hay and Fodder (Incl. Dehy Alfalfa Cubes)	4.3	2.9	2.0	4.6	7.0	6.7	13.1	16.1	13.7	7.3	-46.7
Peas, Dried	0.9	0.4	0.5	0.9	0.3	0.5	0.4	1.7	0.2	0.2	37.2
Lentils	0.2	0.1	0.1	0.2	0.1	0.2	0.0	0.0	0.6	-	-100.0
Other Dried Beans	19.6	21.9	15.1	8.3	15.0	12.7	11.5	15.3	17.7	10.8	-39.1
Potatoes, Seed and Other	10.5	21.8	13.8	15.1	13.0	13.7	13.6	3.2	7.4	7.4	-0.4
Vegetables and Fruits	1.0	5.0	12.4	12.2	11.5	12.6	14.1	13.2	15.1	16.0	5.9
Canola Seed	36.2	31.9	12.2	55.1	54.9	91.2	107.1	203.5	92.7	72.4	-21.9
Mustard Seed	4.5	4.8	7.3	7.5	5.2	4.3	7.1	20.6	20.5	17.5	-14.7
Linseed	0.6	0.7	0.9	1.0	2.9	1.5	1.5	3.0	2.3	2.3	0.8
Other Oilseeds/Oilnuts/Kernels	0.0	0.4	0.1	0.2	0.3	0.2	0.3	0.9	1.5	0.5	-64.3
Crude Animal and Plant Products	111.1	109.1	78.9	93.6	103.6	110.3	119.2	110.7	108.5	106.9	-1.4
Raw Hides and Skins	14.3	12.6	10.4	24.7	18.6	6.4	9.6	8.3	3.7	15.1	303.6
Fur Skins Undressed	0.1	0.1	0.0	0.1	0.0	0.1	0.1	0.0	0.0	0.0	390.9
Bovine Semen	9.2	10.9	9.6	10.0	12.5	18.9	15.7	11.8	13.7	12.8	-6.9
Other Crude Animal Products	12.8	14.9	5.0	1.2	2.9	4.3	3.8	7.1	7.0	5.5	-21.7
Seeds for Sowing	36.4	30.0	25.6	28.7	26.4	37.6	45.1	39.7	31.3	23.7	-24.1
Nursery Stock	0.9	0.6	0.6	0.3	0.4	0.3	0.4	0.3	0.3	0.3	12.6
Peat Moss	36.8	39.3	26.1	27.3	40.8	38.7	43.9	41.7	50.3	47.0	-6.5
Other Crude Vegetable Products	0.7	0.7	1.6	1.2	2.0	4.2	0.7	1.8	2.2	2.5	14.5
Products of Manufacture	2,040.6	1,956.6	1,569.8	1,933.7	1,853.6	1,454.2	1,406.4	1,711.4	1,563.3	1,421.0	-9.1
Beef (Fresh, Chilled, Frozen, Incl. Offal)	1,317.9	1,298.0	909.1	1,195.0	1,183.4	720.0	670.8	820.7	709.7	723.8	2.0
Pork (Fresh, Chilled, Frozen, Incl. Offal)	86.7	41.7	45.9	104.6	127.3	129.9	107.5	55.6	57.3	65.7	14.5
Horse Meat (Fresh, Chilled, Frozen, Incl. Offal)	0.2	0.0	0.0	-	-	-	-	-	-	-	-
Other Meat (Fresh, Chilled, Frozen, Incl. Offal)	4.1	3.8	3.0	9.2	7.1	3.6	1.6	3.6	4.2	5.9	40.3
Processed Meats	4.7	14.3	11.3	9.2	3.6	1.5	3.9	1.2	3.0	2.7	-9.4
Dairy Produce	0.1	0.8	0.2	0.1	0.0	-	0.0	0.1	0.2	0.1	-65.8
Eggs	0.0	0.0	0.4	0.2	0.9	1.7	4.6	0.1	-	-	-
Honey	3.3	12.0	15.0	10.4	6.1	3.1	5.3	7.6	9.1	7.3	-19.8
Wheat or Meslin Flour	3.7	8.9	5.5	3.9	4.3	5.0	3.9	7.3	4.6	3.3	-27.9
Malt Roasted or not Roasted	28.3	29.1	31.3	23.5	16.6	22.5	37.0	73.8	74.1	54.7	-26.2
Other Cereals, Milled	10.4	17.4	17.8	14.7	15.1	33.7	24.0	28.5	23.3	20.4	-12.5
Cereal Preparations	62.4	63.5	53.8	34.3	37.0	37.3	35.6	38.6	39.8	36.4	-8.6
Vegetable and Fruit Preparations	2.9	3.8	2.4	2.0	2.4	3.4	7.8	9.5	7.9	4.9	-37.9
Fruit and Vegetable Juices	1.2	1.4	4.7	7.0	7.5	4.5	4.7	4.6	4.7	3.8	-19.2
Processed Potatoes	147.6	152.5	121.9	144.5	111.5	153.4	153.2	147.1	174.3	131.0	-24.8
Sugar and Sugar Preparations	4.6	10.3	7.6	16.1	25.7	38.4	8.6	24.2	10.9	8.5	-22.3
Other Food/Food Materials	34.3	39.8	40.8	31.6	31.5	26.2	26.6	28.9	30.9	29.6	-4.2
Oilseed Cake and Meal	104.3	76.2	125.4	148.6	112.4	96.3	94.3	144.0	142.9	61.0	-57.4
Alfalfa Meal and Pellets	0.5	0.0	0.1	0.1	0.0	1.6	0.9	0.1	0.0	0.0	-68.9
Other Feeds of Vegetable Origin	1.9	0.7	1.1	1.1	1.5	0.9	2.1	1.9	4.5	3.8	-14.8
Animal Feed Preparations	19.5	22.1	12.7	10.4	12.1	10.2	15.0	17.8	25.6	37.8	47.9
Whiskey	35.9	33.1	36.3	37.0	36.4	35.8	34.0	38.1	38.5	39.8	3.4
Beer	0.3	6.0	4.7	2.2	2.1	1.2	1.1	1.5	1.3	3.0	127.6
Other Beverages (Excl. Fruit Juices)	32.6	20.9	19.3	15.7	10.3	10.2	8.0	5.7	20.6	14.2	-31.1
Tallow	14.9	9.1	2.7	10.2	12.4	8.8	16.4	32.9	17.9	29.5	64.7
Canola/Mustard Oil - Crude	2.1	13.4	7.3	9.5	7.6	6.6	9.1	33.2	11.8	4.2	-64.0
Canola/Mustard Oil - Refined	85.1	46.3	62.5	63.6	63.3	83.1	114.6	160.1	123.8	102.5	-17.2
Other Oils, Fats and Waxes	30.9	31.3	27.1	29.1	15.4	15.4	16.0	24.7	22.2	27.0	21.8
Other Products	0.1	0.1	-	0.1	-	-	0.0	-	-	0.0	-

r - revised p - preliminary

Source: Statistics Canada. World Trade Atlas

Prepared by: Alberta Agriculture and Rural Development, Economics and Competitiveness Division, Statistics and Data Development Branch

Alberta Agri-Food Exports to China, 2001 - 2010, Value

	2001	2002	2003	2004	2005	2006	2007r	2008r	2009p	2010p	2010/2009
	Thousands of Dollars										% Change
Agri-Food Exports to China	280,970	76,249	96,958	451,836	349,714	233,914	467,648	623,559	986,665	1,030,223	4.4
Animals and Crops	233,332	37,758	50,242	288,453	178,172	111,017	179,910	326,839	560,138	251,580	-55.1
Purebred Cattle	-	1,432	-	-	-	-	-	-	-	-	-
Barley	53,082	12,010	7,801	40,625	47,487	29,432	32,964	25,293	46,747	22,502	-51.9
Wheat	44,562	13,161	12,659	212,426	83,948	10,633	187	-	13,290	22,364	68.3
Oats	-	-	-	-	-	-	1	-	-	-	-
Other Cereals Unmilled	-	42	0	-	5	-	2	-	34	12	-63.6
Hay and Fodder (Incl. Dehy Alfalfa Cubes)	56	-	39	12	-	-	10	-	-	-	-
Peas, Dried	6,245	234	93	686	795	1,097	2,721	43	146	2,792	1818.3
Other Dried Beans	-	13	-	-	-	-	-	-	-	-	-
Potatoes, Seed and Other	-	-	-	3	-	-	-	-	-	-	-
Vegetables and Fruits	39	-	18	-	-	-	-	-	354	1,527	330.9
Canola Seed	129,347	10,831	29,605	34,638	45,883	69,536	143,609	300,955	497,086	200,729	-59.6
Mustard Seed	-	0	0	0	33	11	8	-	28	26	-7.4
Linseed	-	17	27	44	22	309	408	548	2,453	1,627	-33.7
Other Oilseeds/Oilnuts/Kernels	-	17	-	20	-	-	-	-	-	-	-
Crude Animal and Plant Products	44,027	28,971	23,276	25,562	69,522	64,947	60,946	61,302	53,239	55,195	3.7
Raw Hides and Skins	43,643	27,018	21,303	24,904	66,679	62,346	57,732	59,025	47,101	47,224	0.3
Bovine Semen	140	258	-	-	349	503	1,150	499	1,179	670	-43.2
Other Crude Animal Products	159	1,565	1,836	489	2,308	1,896	1,824	1,371	4,644	6,880	48.1
Seeds for Sowing	84	113	36	-	102	49	223	384	260	421	61.7
Nursery Stock	-	-	-	-	-	9	-	-	-	-	-
Peat Moss	-	16	101	165	-	-	-	4	8	-	-100.0
Other Crude Vegetable Products	-	-	-	4	84	143	17	19	47	-	-100.0
Products of Manufacture	3,611	9,520	23,441	137,821	102,020	57,950	226,792	235,418	373,288	723,449	93.8
Beef (Fresh, Chilled, Frozen, Incl. Offal)	1,049	3,800	1,280	203	-	-	106	-	-	25	-
Pork (Fresh, Chilled, Frozen, Incl. Offal)	543	608	640	2,273	2,377	3,170	3,255	4,362	564	95	-83.1
Other Meat (Fresh, Chilled, Frozen, Incl. Offal)	611	447	90	53	-	-	63	-	-	27	-
Processed Meats	-	-	-	-	-	36	-	-	-	-	-
Dairy Produce, Eggs and Honey	27	202	339	721	0	-	-	36	221	121	-45.3
Wheat or Meslin Flour	186	42	125	333	85	140	201	126	24	-	-100.0
Malt Roasted or not Roasted	205	317	1,188	4,196	2,912	2,147	-	-	-	-	-
Other Cereals, Milled	61	-	-	37	25	9	16	2	-	1	-
Cereal Preparations	-	4	1	9	8	10	-	1	3	3	16.9
Vegetable and Fruit Preparations	-	-	-	20	173	-	-	-	-	-	-
Fruit and Vegetable Juices	-	47	-	-	-	-	3	-	-	-	-
Processed Potatoes	63	515	795	6,770	12,661	12,698	13,299	6,147	3,391	1,994	-41.2
Sugar and Sugar Preparations	-	6	-	-	-	-	-	-	-	-	-
Other Food/Food Materials	126	273	471	969	1,948	1,166	277	159	71	94	31.4
Oilseed Cake and Meal	-	-	-	-	-	7	102	11	1,011	98,516	9646.5
Alfalfa Meal and Pellets	-	-	-	-	-	-	-	-	-	-	-
Other Feeds of Vegetable Origin	-	-	-	-	-	-	-	-	-	-	-
Animal Feed Preparations	599	1,546	327	-	-	5	3,031	128	269	-	-100.0
Whiskey	-	-	30	-	-	-	-	-	-	-	-
Other Beverages (Excl. Fruit Juices)	-	24	-	-	-	-	-	23	20	117	483.9
Tallow	-	-	4,161	-	-	-	-	-	-	-	-
Canola/Mustard Oil - Crude	-	71	13,986	122,212	81,831	38,552	206,327	171,712	365,852	622,451	70.1
Canola/Mustard Oil - Refined	140	1,616	-	-	-	-	-	50,718	-	-	-
Other Oils, Fats and Waxes	-	3	7	24	-	9	114	1,993	1,863	5	-99.7

0 (zero) refers to value lower than \$500.

r - revised p - preliminary

Source: Statistics Canada. World Trade Atlas

Prepared by: Alberta Agriculture and Rural Development, Economics and Competitiveness Division, Statistics and Data Development Branch

Alberta Agri-Food Exports to Japan, 2001 - 2010, Value

	2001	2002	2003	2004	2005	2006	2007r	2008r	2009p	2010p	2010/2009
	Thousands of Dollars										% Change
Agri-Food Exports to Japan	781,081	793,513	670,628	776,144	829,085	786,066	906,621	1,195,606	919,261	827,588	-10.0
Animals and Crops	379,128	467,833	336,667	423,965	444,913	467,553	594,172	836,627	520,075	444,168	-14.6
Purebred Cattle	-	-	10	-	-	-	-	-	-	-	-
Live Hogs	-	-	-	90	-	-	-	-	-	-	-
Other Live Animals (Horses)	3,954	2,084	4,242	6,985	13,365	14,948	13,841	11,574	7,218	9,277	28.5
Barley	10,804	1,842	11,343	14,342	16,171	18,935	15,447	45,883	18,573	12,584	-32.2
Wheat	102,891	100,179	73,942	85,851	81,860	81,959	94,465	189,182	103,779	85,176	-17.9
Oats	629	130	190	308	961	645	1,298	449	446	484	8.6
Other Cereals Unmilled	255	62	20	8,689	335	581	4,828	1,225	854	1,210	41.7
Hay and Fodder (Incl. Dehy Alfalfa Cubes)	67,538	84,255	66,614	85,935	75,416	85,422	103,594	64,449	58,972	42,296	-28.3
Peas, Dried	764	716	671	751	750	989	681	410	734	380	-48.2
Other Dried Beans Incl. Lentils	141	-	11	14	66	48	346	189	55	23	-57.9
Potatoes, Seed and Other	15	17	-	-	-	-	-	-	-	-	-
Vegetables and Fruits	-	75	1	-	50	-	-	225	15	450	2897.3
Canola Seed	190,494	276,958	178,104	217,211	252,544	262,441	357,021	519,524	323,246	287,145	-11.2
Mustard Seed	1,221	1,169	1,368	3,382	2,796	1,414	2,404	3,302	6,076	4,756	-21.7
Linseed	407	328	151	317	594	170	136	185	73	387	427.0
Other Oilseeds/Oilnuts/Kernels	17	18	-	89	7	-	110	32	33	-	-100.0
Crude Animal and Plant Products	7,855	8,615	8,370	6,034	4,753	4,028	7,217	6,141	3,127	3,404	8.8
Raw Hides and Skins	2,914	2,667	5,394	3,983	3,899	3,156	6,465	4,550	1,539	1,961	27.4
Fur Skins Undressed	10	-	-	-	-	-	-	15	-	-	-
Bovine Semen	-	309	679	988	238	539	303	839	1,078	1,062	-1.4
Other Crude Animal Products	4,287	4,965	1,530	72	55	219	89	-	72	37	-49.0
Seeds for Sowing	432	97	216	321	166	21	186	325	141	175	23.7
Peat Moss	200	566	519	670	395	88	174	412	297	169	-43.2
Other Crude Vegetable Products	12	11	33	-	-	5	-	-	-	-	-
Products of Manufacture	394,098	317,065	325,591	346,144	379,419	314,485	305,232	352,838	396,059	380,017	-4.1
Beef (Fresh, Chilled, Frozen, Incl. Offal)	125,860	67,616	33,592	-	45	12,379	19,525	30,739	47,443	64,454	35.9
Pork (Fresh, Chilled, Frozen, Incl. Offal)	116,219	123,823	171,627	198,870	246,305	185,223	156,613	169,652	196,507	203,144	3.4
Horse Meat (Fresh, Chilled, Frozen, Incl. Offal)	17,095	12,952	11,347	13,825	16,752	15,817	16,803	16,926	18,571	14,735	-20.7
Other Meat (Fresh, Chilled, Frozen, Incl. Offal)	38	42	40	-	-	-	-	-	-	0	-
Processed Meats	9,286	7,609	1,998	859	384	612	812	382	0	-	-100.0
Dairy Produce	1,223	396	682	-	45	-	-	-	-	264	-
Honey	550	1,461	756	1,258	593	508	684	3,951	4,545	6,108	34.4
Wheat or Meslin Flour	1,901	2,461	1,046	174	72	252	21	-	-	-	-
Malt Roasted or not Roasted	71,944	66,043	53,153	43,544	36,111	36,901	52,338	72,722	80,201	52,422	-34.6
Other Cereals, Milled	84	448	79	134	46	8	120	128	362	309	-14.7
Cereal Preparations	297	319	330	302	410	835	532	402	130	132	1.2
Vegetable and Fruit Preparations	-	80	703	145	-	-	-	41	-	-	-
Fruit and Vegetable Juices	-	-	-	33	-	-	-	-	-	-	-
Processed Potatoes	7,103	9,767	8,519	35,304	32,381	33,585	34,041	30,208	28,227	23,960	-15.1
Sugar and Sugar Preparations	3	-	5	21	32	37	23	56	10	19	78.9
Other Food/Food Materials	606	3,568	3,139	3,380	2,645	2,683	2,365	2,609	2,160	1,366	-36.7
Oilseed Cake and Meal	3,609	312	920	145	99	-	-	10	112	5	-96.0
Alfalfa Meal and Pellets	29,871	9,072	8,395	19,162	10,969	7,393	2,650	-	-	-	-
Other Feeds of Vegetable Origin	270	2,101	1,751	4,371	2,182	2,596	1,522	872	2,574	1,930	-25.0
Animal Feed Preparations	1,077	1,611	529	507	411	663	415	639	600	1,139	90.0
Whiskey	314	508	535	693	60	23	12	10	20	20	0.0
Other Beverages (Excl. Fruit Juices)	-	101	76	1,428	1,367	557	236	613	1,001	860	-14.2
Tallow	182	-	725	1,439	223	-	-	-	-	-	-
Canola/Mustard Oil - Crude	-	1,102	1,975	7,657	11,624	3,468	8,423	4,726	1,709	372	-78.3
Canola/Mustard Oil - Refined	4,303	814	18,174	4,521	7,862	3,612	3,331	11,957	5,976	2,700	-54.8
Other Oils, Fats and Waxes	1,911	4,513	5,495	8,230	8,801	7,333	4,768	6,196	5,910	6,078	2.8
Other Products	351	349	-	144	-	-	-	-	-	-	-

0 (zero) refers to value lower than \$500.

r - revised p - preliminary

Source: Statistics Canada, World Trade Atlas

Prepared by: Alberta Agriculture and Rural Development, Economics and Competitiveness Division, Statistics and Data Development Branch

Alberta Agri-Food Exports to Mexico, 2001 - 2010, Value

	2001	2002	2003	2004	2005	2006	2007r	2008r	2009p	2010p	2010/2009
	Thousands of Dollars										% Change
Agri-Food Exports to Mexico	409,862	362,677	246,415	524,843	394,259	398,179	455,580	606,214	438,059	460,144	5.0
Animals and Crops	165,048	140,634	113,103	196,932	188,360	233,055	273,577	402,199	267,422	266,858	-0.2
Purebred Cattle	-	-	48	-	-	-	-	-	-	-	-
Other Cattle (Excl. Purebred)	-	-	69	-	-	-	-	-	-	3	-
Live Hogs	77	-	-	41	-	719	-	-	-	-	-
Sheep and Goats, Live	140	103	206	-	-	28	-	-	-	-	-
Barley	885	559	199	1,193	-	1,246	4,708	14,589	3,423	-	-100.0
Wheat	76,744	53,329	48,300	55,303	54,240	90,273	76,487	70,831	97,089	72,384	-25.4
Oats	105	2	21	18	167	123	1,366	190	99	111	12.0
Other Cereals Unmilled	-	52	38	-	-	-	154	-	-	5	-
Peas, Dried	304	-	-	32	0	-	49	-	-	-	-
Lentils	-	-	-	-	-	-	-	-	-	-	-
Other Dried Beans	164	79	-	13	67	167	419	-	273	74	-72.8
Potatoes, Seed and Other	2,358	4,661	1,817	1,494	3,455	4,568	2,151	593	1,332	1,359	2.0
Vegetables and Fruits	24	-	46	-	-	-	-	-	-	-	-
Canola Seed	84,184	81,681	62,321	138,694	130,374	135,869	188,205	315,929	165,134	192,865	16.8
Mustard Seed	-	-	-	46	-	-	-	-	-	-	-
Linseed	62	34	39	97	56	62	39	68	72	58	-19.2
Other Oilseeds/Oilnuts/Kernels	-	134	-	-	-	-	-	-	-	-	-
Crude Animal and Plant Products	4,295	1,384	714	3,253	2,859	5,022	6,649	10,880	8,828	10,487	18.8
Raw Hides and Skins	114	218	331	1,797	186	317	-	21	1	7	885.1
Bovine Semen	46	72	-	5	54	35	148	132	77	957	1150.8
Other Crude Animal Products	4,135	1,095	378	1,451	2,599	4,670	6,497	10,727	8,751	9,519	8.8
Peat Moss	-	-	-	-	20	-	4	-	-	4	-
Other Crude Vegetable Products	-	-	4	-	-	-	-	-	-	-	-
Products of Manufacture	240,519	220,659	132,598	324,659	203,040	160,103	175,354	193,135	161,809	182,798	13.0
Beef (Fresh, Chilled, Frozen, Incl. Offal)	218,695	196,911	102,647	296,372	172,989	130,777	140,916	144,483	137,472	152,643	11.0
Pork (Fresh, Chilled, Frozen, Incl. Offal)	6,268	7,264	10,344	14,271	13,553	12,630	11,615	12,165	3,851	7,518	95.2
Horse Meat (Fresh, Chilled, Frozen, Incl. Offal)	688	577	1,856	2,599	2,862	2,372	1,897	677	893	698	-21.8
Other Meat (Fresh, Chilled, Frozen, Incl. Offal)	219	44	121	488	176	-	40	42	45	107	136.7
Processed Meats	681	500	52	322	144	71	190	360	160	93	-41.6
Dairy Produce	9,588	9,375	-	-	-	-	3,815	-	-	-	-
Malt Roasted or not Roasted	-	1,023	13,111	-	-	1,394	-	15,436	3,957	-	-100.0
Other Cereals, Milled	2,384	547	125	150	937	1,400	330	643	472	1,482	214.3
Cereal Preparations	-	-	-	-	2	713	-	-	-	-	-
Vegetable and Fruit Preparations	39	-	-	-	4	-	-	-	-	1	-
Fruit and Vegetable Juices	131	45	156	2,377	2,668	3,512	4,051	4,918	4,598	4,419	-3.9
Processed Potatoes	1,419	2,438	3,171	4,293	8,472	5,755	5,348	4,916	6,398	5,746	-10.2
Sugar and Sugar Preparations	-	-	-	-	-	237	5,828	7,569	1,212	6,069	401.0
Other Food/Food Materials	-	-	74	10	270	561	512	0	19	-	-100.0
Oilseed Cake and Meal	-	-	-	-	-	-	-	-	841	2,702	221.4
Alfalfa Meal and Pellets	-	-	-	-	-	-	35	-	-	-	-
Animal Feed Preparations	-	-	23	58	171	174	-	-	-	3	-
Other Beverages (Excl. Fruit Juices)	409	899	906	92	21	36	-	3	-	108	-
Tallow	-	-	-	2,992	20	-	-	-	-	6	-
Canola/Mustard Oil - Crude	-	1,003	-	-	-	-	-	1,756	1,384	-	-100.0
Canola/Mustard Oil - Refined	-	-	-	-	-	93	318	141	137	15	-89.0
Other Oils, Fats and Waxes	-	33	12	635	750	377	459	26	371	1,187	220.3

0 (zero) refers to value lower than \$500.

r - revised p - preliminary

Source: Statistics Canada. World Trade Atlas

Prepared by: Alberta Agriculture and Rural Development, Economics and Competitiveness Division, Statistics and Data Development Branch

Alberta Agri-Food Exports to South Korea, 2001 - 2010, Value

	2001	2002	2003	2004	2005	2006	2007r	2008r	2009p	2010p	2010/2009
	Thousands of Dollars										% Change
Agri-Food Exports to S. Korea	94,112	97,697	67,273	63,560	173,019	122,847	118,320	148,563	117,486	146,188	24.4
Animals and Crops	30,286	17,587	8,333	29,784	91,495	45,796	20,092	31,025	25,596	73,106	185.6
Purebred Cattle	-	-	-	-	-	-	593	300	577	-	-100.0
Live Hogs	-	-	93	72	122	24	-	-	-	-	-
Other Live Animals (Excl. Horses and Poultry)	-	-	-	-	-	-	-	-	-	-	-
Barley	689	-	7	-	-	-	-	1,360	1	-	-100.0
Wheat	22,201	11,179	6,364	24,489	77,919	33,896	8,643	24,527	20,338	71,070	249.4
Oats	32	3	6	4	17	8	31	5	9	1	-84.6
Other Cereals Unmilled	226	136	2	168	612	380	1,004	153	1,448	272	-81.2
Hay and Fodder (Incl. Dehy Alfalfa Cubes)	6,879	6,224	1,789	4,987	12,582	11,069	9,413	4,063	2,020	297	-85.3
Peas, Dried	20	20	-	-	-	-	-	-	-	59	-
Other Dried Beans	-	-	-	-	29	116	113	-	71	375	431.7
Canola Seed	76	-	-	-	71	215	-	-	-	20	-
Mustard Seed	138	16	72	62	124	86	291	607	1,122	998	-11.1
Linseed	25	8	1	3	3	3	5	10	10	13	26.8
Other Oilseeds/Oilnuts/Kernels	-	-	-	-	17	-	-	-	-	-	-
Crude Animal and Plant Products	11,033	16,365	5,198	1,930	26,327	15,396	29,269	37,107	16,829	11,154	-33.7
Raw Hides and Skins	10,816	15,749	4,603	1,270	25,834	14,892	29,000	36,567	16,523	10,714	-35.2
Bovine Semen	-	14	56	8	129	282	159	189	164	143	-12.6
Other Crude Animal Products	179	235	-	-	12	-	73	191	-	-	-
Seeds for Sowing	-	-	-	-	-	90	-	-	50	217	336.0
Nursery Stock	-	6	7	-	-	-	-	-	-	-	-
Peat Moss	38	361	532	652	352	131	36	141	93	79	-14.2
Other Crude Vegetable Products	-	-	-	-	-	-	-	18	-	-	-
Products of Manufacture	52,793	63,745	53,742	31,846	55,197	61,655	68,959	80,432	75,062	61,928	-17.5
Beef (Fresh, Chilled, Frozen, Incl. Offal)	21,223	42,646	22,391	-	-	-	-	-	-	-	-
Pork (Fresh, Chilled, Frozen, Incl. Offal)	3,570	4,200	3,780	7,123	23,828	32,838	28,018	31,058	27,725	28,658	3.4
Horse Meat (Fresh, Chilled, Frozen, Incl. Offal)	-	-	-	-	46	-	-	-	-	-	-
Other Meat (Fresh, Chilled, Frozen, Incl. Offal)	57	85	12	118	126	31	-	-	-	-	-
Processed Meats	-	-	35	-	-	-	-	-	-	-	-
Dairy Produce and Eggs	144	72	-	-	-	-	-	-	-	-	-
Honey	-	-	-	-	111	7	149	126	12	7	-41.9
Wheat or Meslin Flour	-	-	471	3,707	1,833	423	4,241	9,138	15,423	11,404	-26.1
Malt Roasted or not Roasted	10,356	7,302	705	7,261	7,910	5,063	8,627	7,016	9,843	1,377	-86.0
Other Cereals, Milled	-	-	-	4	98	10	9	105	52	-	-100.0
Cereal Preparations	43	56	71	105	165	461	1,057	221	1,658	1,705	2.8
Vegetable and Fruit Preparations	-	-	-	65	-	-	-	-	30	67	121.0
Processed Potatoes	14	-	561	7,575	9,097	5,345	2,117	9,097	7,080	1,693	-76.1
Sugar and Sugar Preparations	-	-	-	-	-	-	0	-	-	-	-
Other Food/Food Materials	-	96	65	25	350	627	716	378	443	253	-42.9
Oilseed Cake and Meal	-	-	-	-	27	51	103	230	-	390	-
Alfalfa Meal and Pellets	7,102	332	36	-	-	-	6	-	-	-	-
Other Feeds of Vegetable Origin	-	-	-	212	643	434	665	203	438	469	7.0
Animal Feed Preparations	260	868	61	17	93	106	-	37	-	89	-
Whiskey	43	-	-	-	-	-	-	-	-	-	-
Other Beverages (Grape Wine)	-	-	-	-	-	-	72	127	93	32	-65.0
Tallow	-	-	-	1,603	2,781	-	-	-	-	-	-
Canola/Mustard Oil - Crude	-	-	25,481	4,018	8,001	9,854	20,073	16,914	9,393	12,293	30.9
Canola/Mustard Oil - Refined	9,982	8,059	14	-	2	84	2,308	4,838	2,513	3,488	38.8
Other Oils, Fats and Waxes	-	30	59	13	85	6,321	796	943	359	4	-99.0

0 (zero) refers to value lower than \$500.

r - revised p - preliminary

Source: Statistics Canada. World Trade Atlas

Prepared by: Alberta Agriculture and Rural Development, Economics and Competitiveness Division, Statistics and Data Development Branch