

Forecast from SRD's Fire Weather Section

Thanks to Paul Kruger

- Warmer than normal temperatures, accompanied by low relative humidity and light winds are expected to persist into about Saturday.
- By Saturday, the northern half of the province is expected to see a cooling trend that will push southward, bringing cooler but more seasonal weather to southern Alberta by Sunday.

Precipitation since August 22 as of Sept 06 2011 0800hrs -see map

- Over the past 14 days or so, most of the agricultural areas of the province have seen less than 20 mm of precipitation, with greater amounts recorded mostly west of the city of Calgary.
- Since the beginning of August, precipitation accumulations have generally been near to below normal across most of the province.

Frost areas August 31 as of Sept 06 2011 0800 hrs –see map

- Several areas have seen below freezing temperatures since the end of August, most of which have been west of Hwy 2, north of the City of Edmonton and also through parts of the southern and eastern portions of the Peace Region.
- The warm weather that is expected to persist across the province for the next several days should stave off the risk of frost, for the near term.

Daily Minimum Long Term Normal Temperature Regimes -see Graph

- The graph shows average daily minimum temperature trends for Lethbridge, Strathmore, Lloydminster, Edmonton and Grande Prairie.
- Across the agricultural areas of the province on average, Aug 10th marks the turning point when average daily temperatures begin to drop steadily until the end of October. The average rate of decrease is about 1.7 degrees C every 10 days.
- By about August 10th, average daily minimum temperatures across the agricultural areas range between 8 to 10 C, with most areas seeing average lows of 0C or colder by October 14th.

Historical Fall Frost Probabilities- see graph

Note: During the last 3 weeks of September the probability of getting a -2C frost increases by about 3% per day

- Lethbridge: Historically has about an **8% chance** of seeing a wide spread -2C frost before September 15th
- Strathmore: Historically has about a **23% chance** of seeing a wide spread -2C frost before September 15th
- Red Deer: Historically has about a **27% chance** of seeing a wide spread -2C frost before September 15th
- Edmonton: Historically has about a **17% chance** of seeing a wide spread -2C frost before September 15th

- Grande Prairie: Historically has about a **25% chance** of seeing a wide spread -2C frost before September 15th

Note: To generate frost probabilities check or check temperature regimes for station near you, navigate to the station data viewer at <http://www.agric.gov.ab.ca/app116/stationview.jsp>. Select your station(s) of interest from the map, click on the normal's tab, (located just to the left of the **top** of the station map) then select a date range, (just left of the **bottom** of the station map) and then click the Graph button.

Additional Maps can be found at <http://www.agric.gov.ab.ca/app116/quick.jsp>.

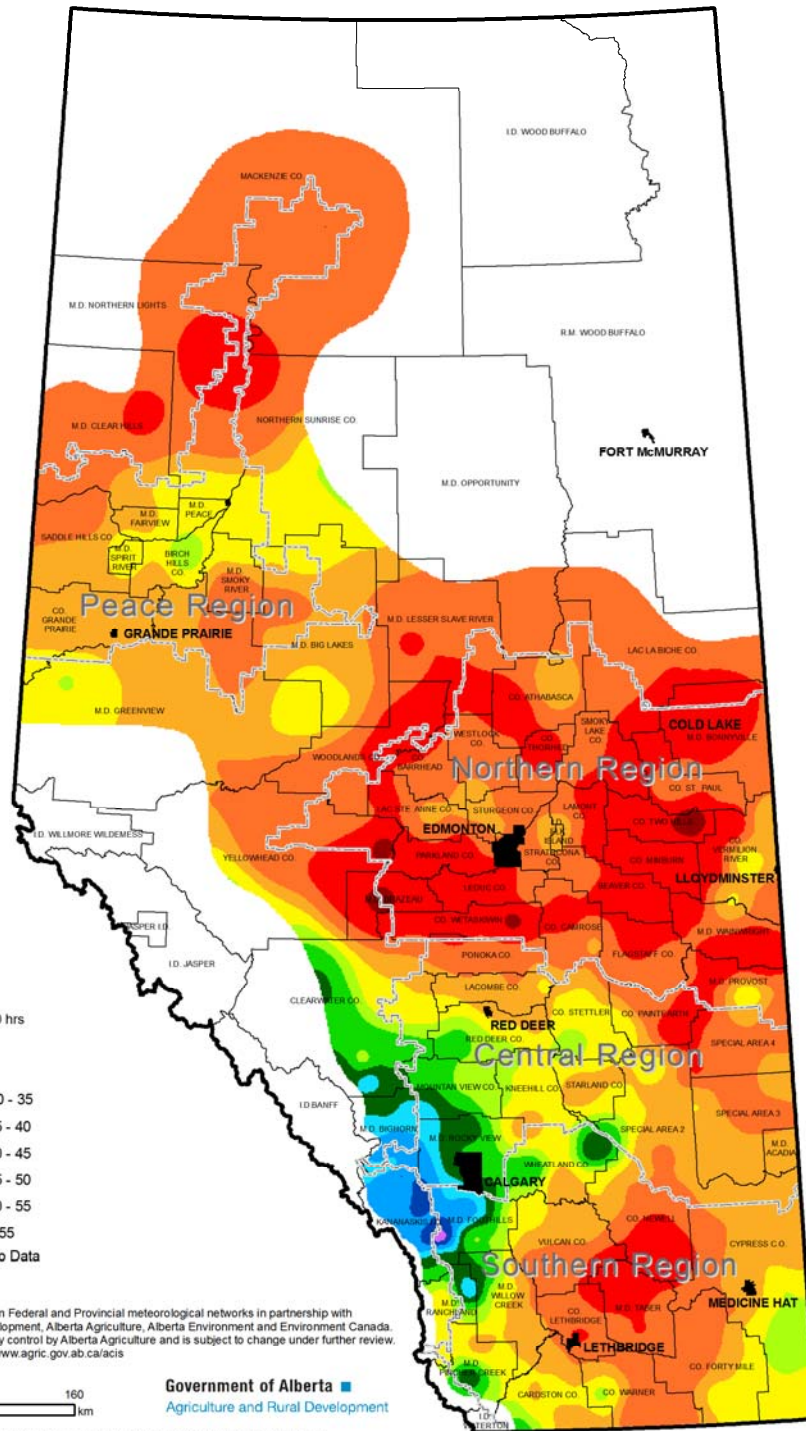
Near-real-time hourly station data can be viewed/downloaded at <http://www.agric.gov.ab.ca/app116/stationview.jsp>.

Note: Data has about a two hour lag and is displayed in MST (add one hour for daylight savings time)

Ralph Wright

Soil Moisture Specialist

Head, Agrometeorology Applications and Modelling Section, ARD



Precipitation Received During the Past -14.67-days

August 22, 2011 to September 06, 2011 aprox. 0800 hrs

Precipitation (mm)

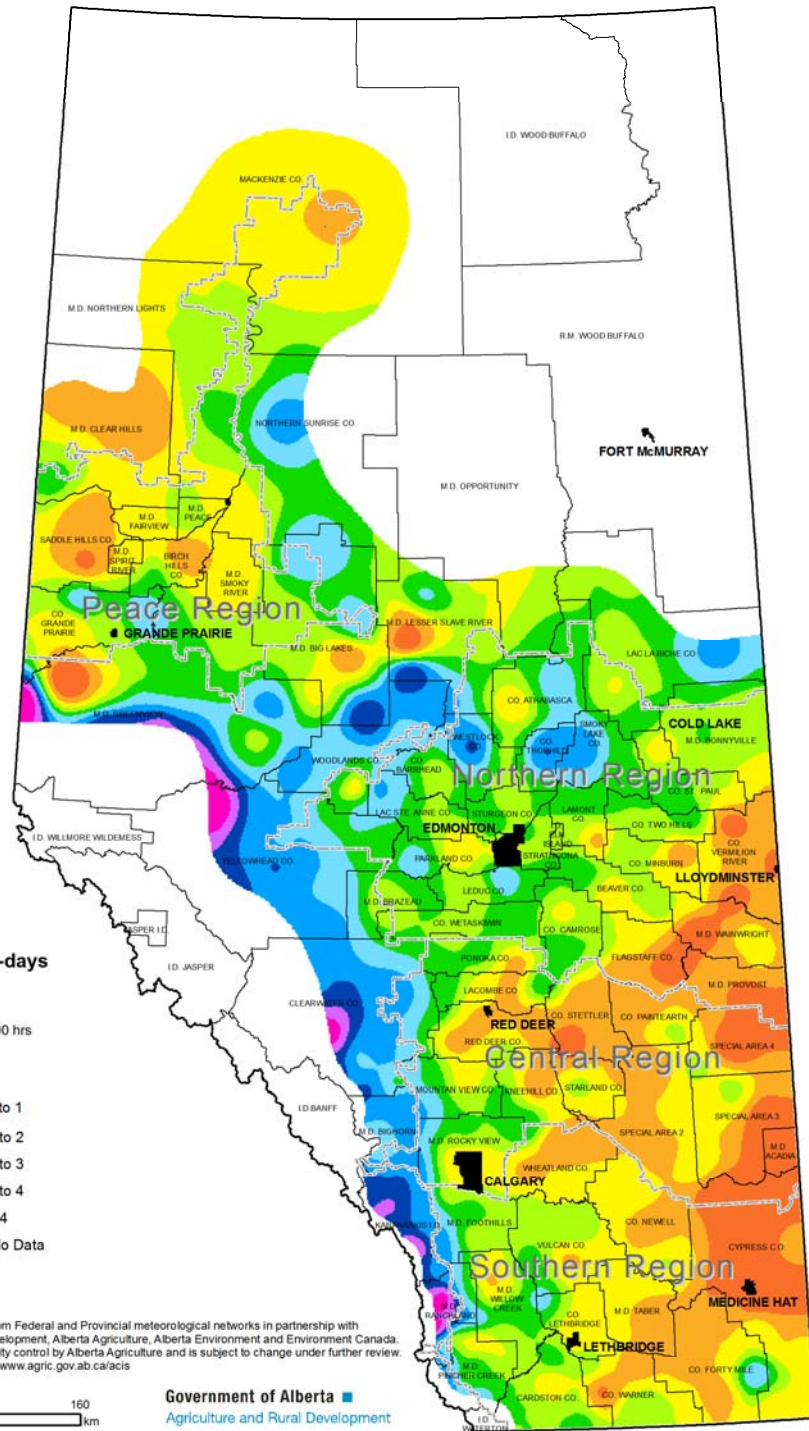
	< 1		30 - 35
	1 - 5		35 - 40
	5 - 10		40 - 45
	10 - 15		45 - 50
	15 - 20		50 - 55
	20 - 25		> 55
	25 - 30		No Data

Near-real-time data was collected from Federal and Provincial meteorological networks in partnership with Alberta Sustainable Resource Development, Alberta Agriculture, Alberta Environment and Environment Canada. Data has passed preliminary quality control by Alberta Agriculture and is subject to change under further review. Live station data can be viewed at www.agric.gov.ab.ca/acis



Government of Alberta
Agriculture and Rural Development

Compiled by Alberta Agriculture and Rural Development, Environmental Stewardship Division, Technology and Innovation Branch
Map created on September 06, 2011



Lowest Recorded Temperature During the Past 6.33-days

August 31, 2011 to September 06, 2011 approx. 0800 hrs

Degree Celsius

■	< -4	■	0 to 1
■	-4 to -3	■	1 to 2
■	-3 to -2	■	2 to 3
■	-2 to -1	■	3 to 4
■	-1 to 0	■	> 4
■	No Data		

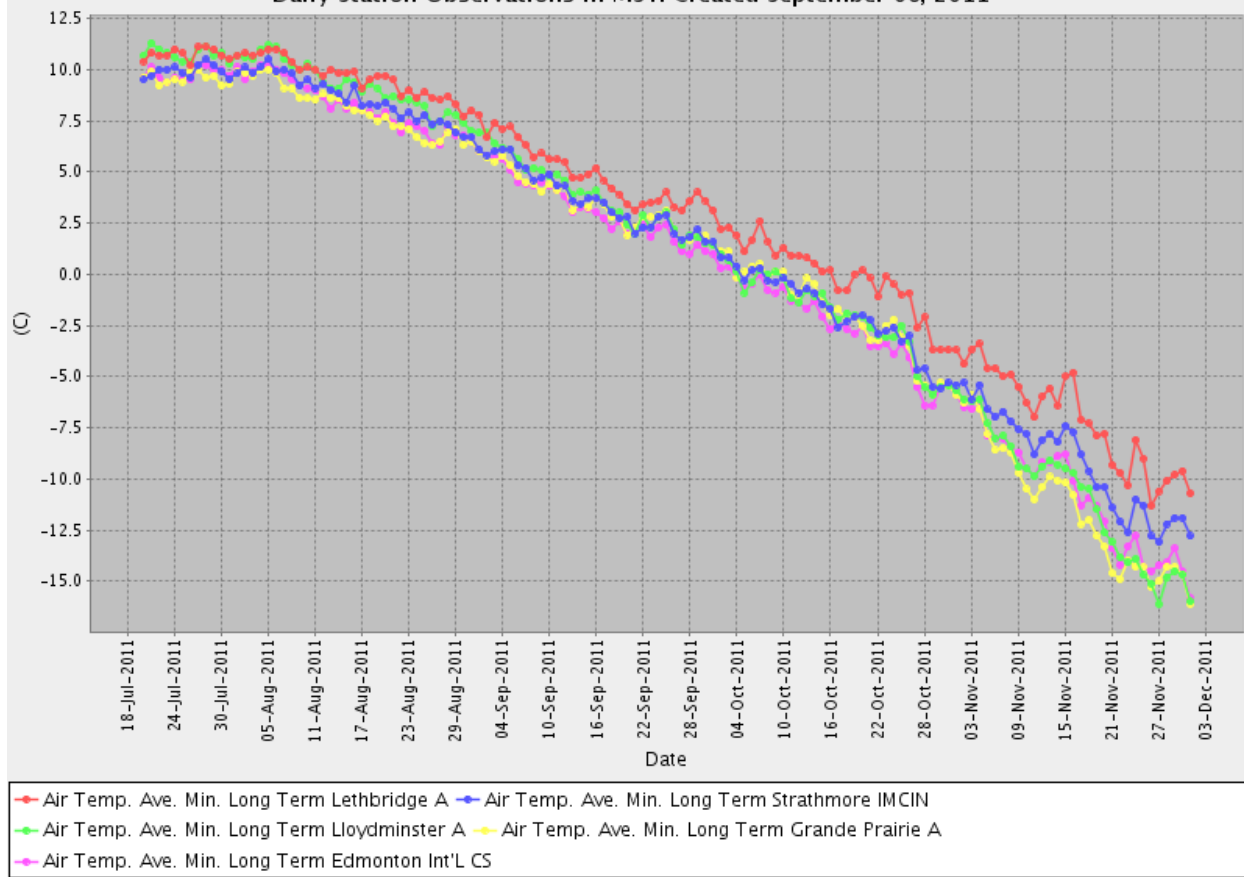
Near-real-time data was collected from Federal and Provincial meteorological networks in partnership with Alberta Sustainable Resource Development, Alberta Agriculture, Alberta Environment and Environment Canada. Data has passed preliminary quality control by Alberta Agriculture and is subject to change under further review. Live station data can be viewed at www.agric.gov.ab.ca/acis



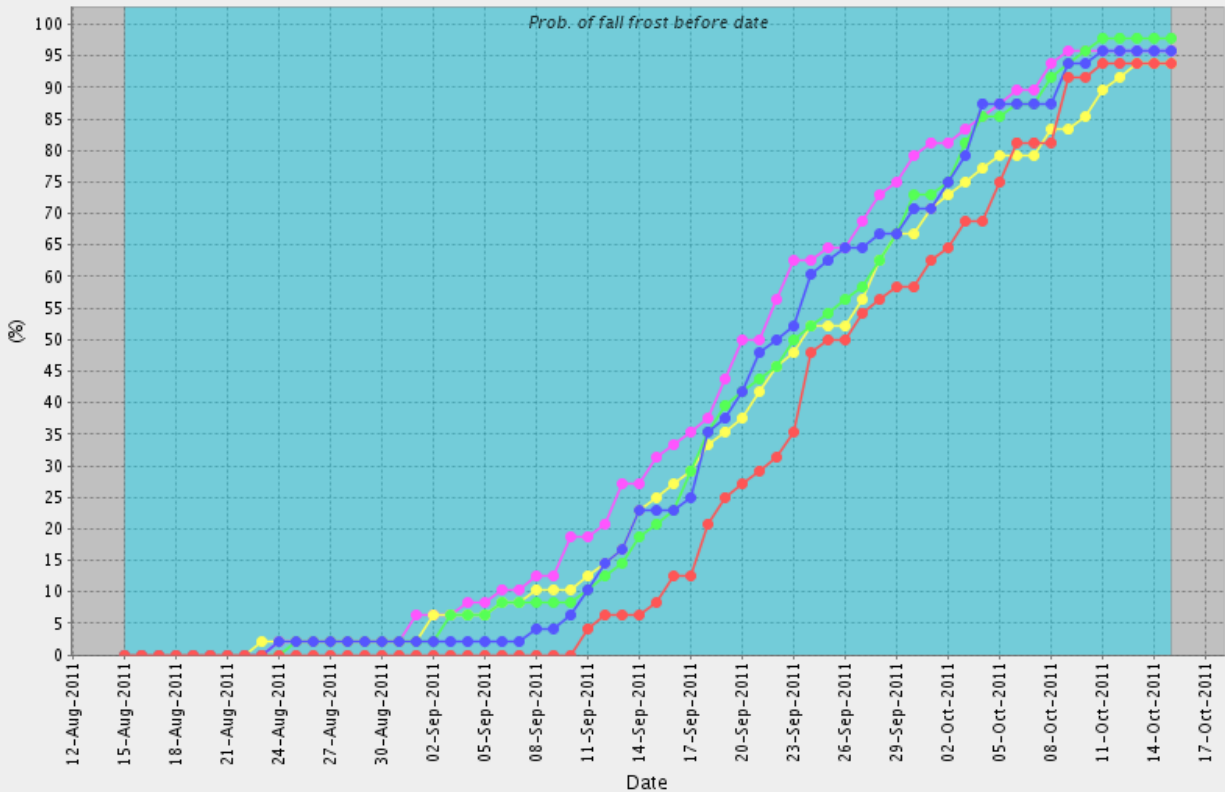
Government of Alberta
Agriculture and Rural Development

Compiled by Alberta Agriculture and Rural Development, Environmental Stewardship Division, Technology and Innovation Branch. Map created on September 06, 2011

Daily Station Observations in MST: Created September 06, 2011



Daily Station Observations in MST: Created September 06, 2011



- Frost Probability -2°C (%) Lethbridge A
- Frost Probability -2°C (%) Strathmore IMCIN
- Frost Probability -2°C (%) Lloydminster A
- Frost Probability -2°C (%) Grande Prairie A
- Frost Probability -2°C (%) Edmonton Int'L CS