

## Moisture Situation Update – July 7, 2011

### Precipitation since June 27 as of July 7, 2011 1100 hrs –see map

- The northern portion of the Peace Region received precipitation in the range of 5 to 30 mm
- Most of the Northern Region received at least 5 mm, with highs of 15 to 30 mm in isolated pockets.
- Portions of the Central Region received precipitation in the range of 5 to 15 mm.

### Growing Season Precipitation Relative to Long Term Normal April 1 to July 6, 2011 -see map

- Most of the reporting area recorded **at least near normal** growing season precipitation, with the exception of the northern portion of the Peace Region (1 in 12 years low) and few isolated pockets (1 in 6 years low) in the rest of the regions.

### Soil Moisture Reserves Relative to Normal as of July 6, 2011 –see map

- Reserves across most of the reporting area varied from **moderately low to near normal** with the exception of the northern portions of the Peace Region, with extremely low (1 in 25 years low) reserves
- Some portions of the reporting area, especially in south, have **moderately high to very high** soil moisture reserves, which occur less than once in 12 years.

**Additional Maps** can be found at <http://www.agric.gov.ab.ca/app116/quick.jsp>.

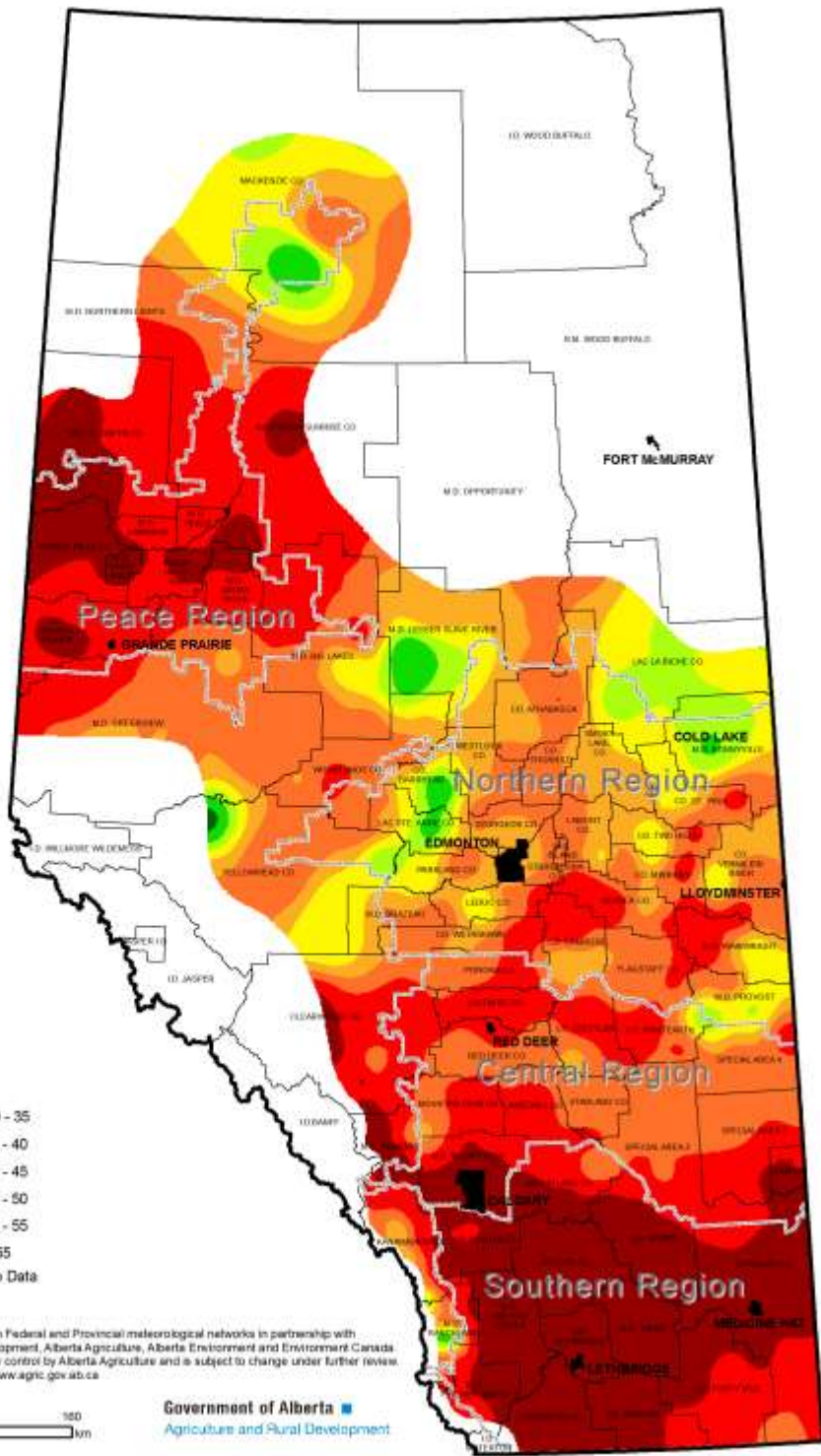
**Near-real-time hourly station** data can be viewed/downloaded at <http://www.agric.gov.ab.ca/app116/stationview.jsp>.

Note: Data has about a two hour lag and is displayed in MST (add one hour for daylight savings time)

### Daniel Itenfisu

Drought Modeler

Agrometeorology Applications and Modeling Section, ARD **Additional Maps** can be found at <http://www.agric.gov.ab.ca/app116/quick.jsp>.



**Precipitation Received During the Past 10.46-days**

June 27, 2011 to July 07, 2011 approx. 1100 hrs

**Precipitation (mm)**

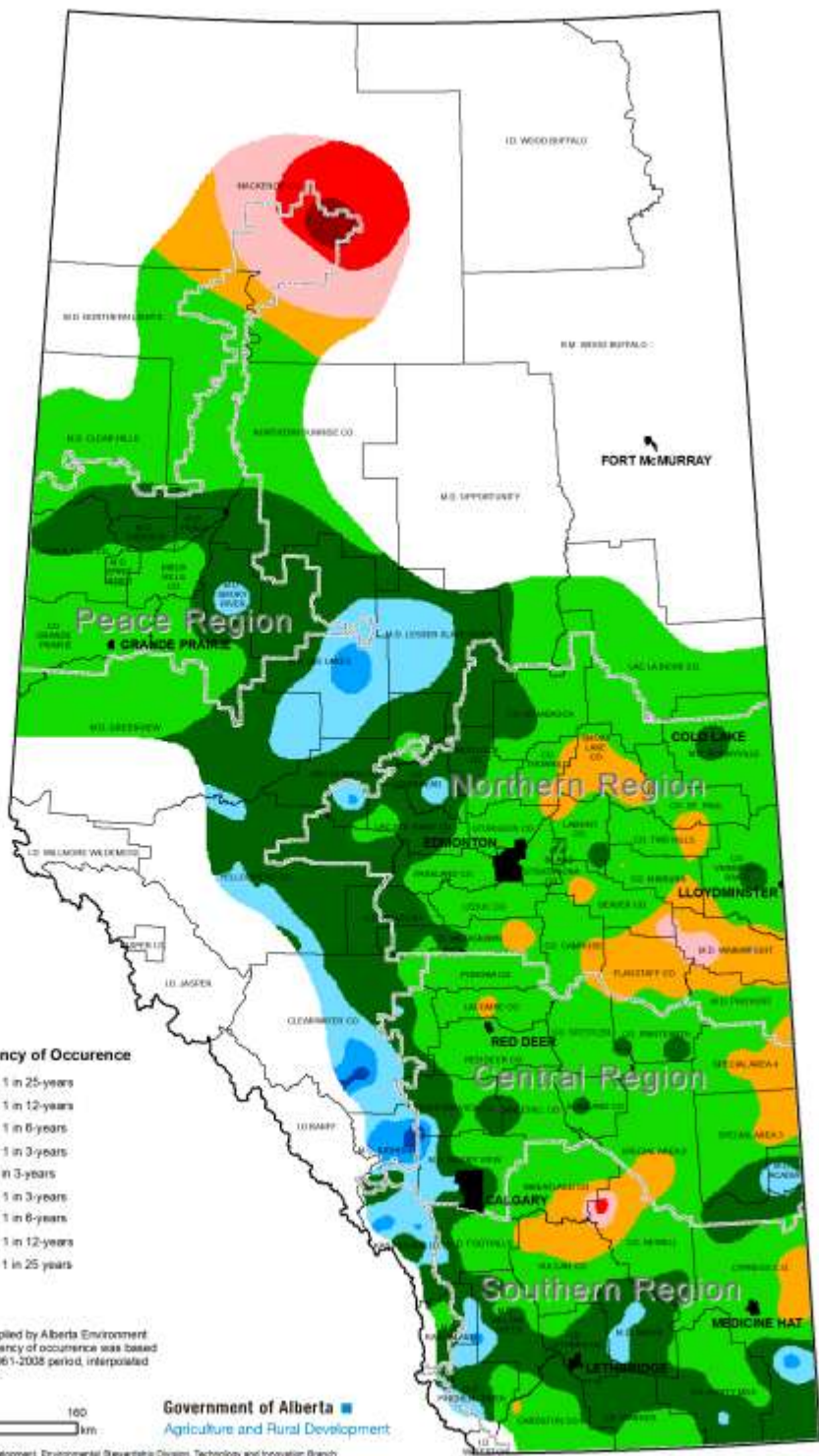
< 1	30 - 35
1 - 5	35 - 40
5 - 10	40 - 45
10 - 15	45 - 50
15 - 20	50 - 55
20 - 25	> 55
25 - 30	No Data

Near-real-time data was collected from Federal and Provincial meteorological networks in partnership with Alberta Sustainable Resource Development, Alberta Agriculture, Alberta Environment and Environment Canada. Data has passed preliminary quality control by Alberta Agriculture and is subject to change under further review. Live station data can be viewed at [www.agric.gov.ab.ca](http://www.agric.gov.ab.ca)



Government of Alberta  
Agriculture and Rural Development

Compiled by Alberta Agriculture and Rural Development, Environmental Stewardship Division, Technology and Innovation Branch



**Growing Season  
Precipitation  
Accumulations  
Relative to  
Long Term Normal**

April 01, 2011 to  
July 06, 2011

Condition	Frequency of Occurrence
extremely low	less than 1 in 25-years
very low	less than 1 in 12-years
low	less than 1 in 6-years
moderately low	less than 1 in 3-years
near normal	at least 1 in 3-years
moderately high	less than 1 in 3-years
high	less than 1 in 6-years
very high	less than 1 in 12-years
extremely high	less than 1 in 25-years

Near-real-time weather data was supplied by Alberta Environment and Environment Canada. The frequency of occurrence was based on historical weather data from the 1961-2008 period, interpolated to township centres using ADClim-1.0.



Government of Alberta  
Agriculture and Rural Development

Compiled by Alberta Agriculture and Rural Development, Environmental Stewardship Division, Technology and Innovation Branch  
Created on July 27, 2011

