

Moisture Situation Update – August 21, 2011

Forecast from SRD's Fire Weather Section.

- Looking out as far as Saturday (August 27th), province wide, “normal” August weather is expected to persist, with no significant widespread precipitation expected.

Precipitation relative to normal over the past 30-days as of August 21 2011 -see map

- Most wet areas have seen a welcome drying trend over the past 30 days, with precipitation generally near normal or below, across most of the agricultural areas of the province.
- Above normal precipitation accumulations continue to mount in and around the Red Deer area, as well as across a large area south and west of Cold Lake.
- Dry areas are persisting, and emerging, along the east, in and around the Wainwright area, as well as across the Northern Peace Region.

Daily average temperatures relative to normal over the past 15 days as of August 21 2011 -see map

- Daily temperature regimes have been near to slightly below normal across most of the province.
- Above normal temperatures are needed across many areas to speed generally delayed crop development, before the frost comes.

Historical Fall Frost Probabilities - see graph

Note: During the last 3 weeks of September, the probably of getting a -2C frost increases by about 3% per day.

- Lethbridge has about an **8% chance** of seeing a wide spread -2C frost before September 15th
- Strathmore has about a **23% chance** of seeing a wide spread -2C frost before September 15th
- Red Deer has about a **27% chance** of seeing a wide spread -2C frost before September 15th
- Edmonton has about a **17% chance** of seeing a wide spread -2C frost before September 15th
- Grande Prairie has about a **25% chance** of seeing a wide spread -2C frost before September 15th

Additional Maps can be found at <http://www.agric.gov.ab.ca/app116/quick.jsp>.

Near-real-time hourly station data can be viewed/downloaded at

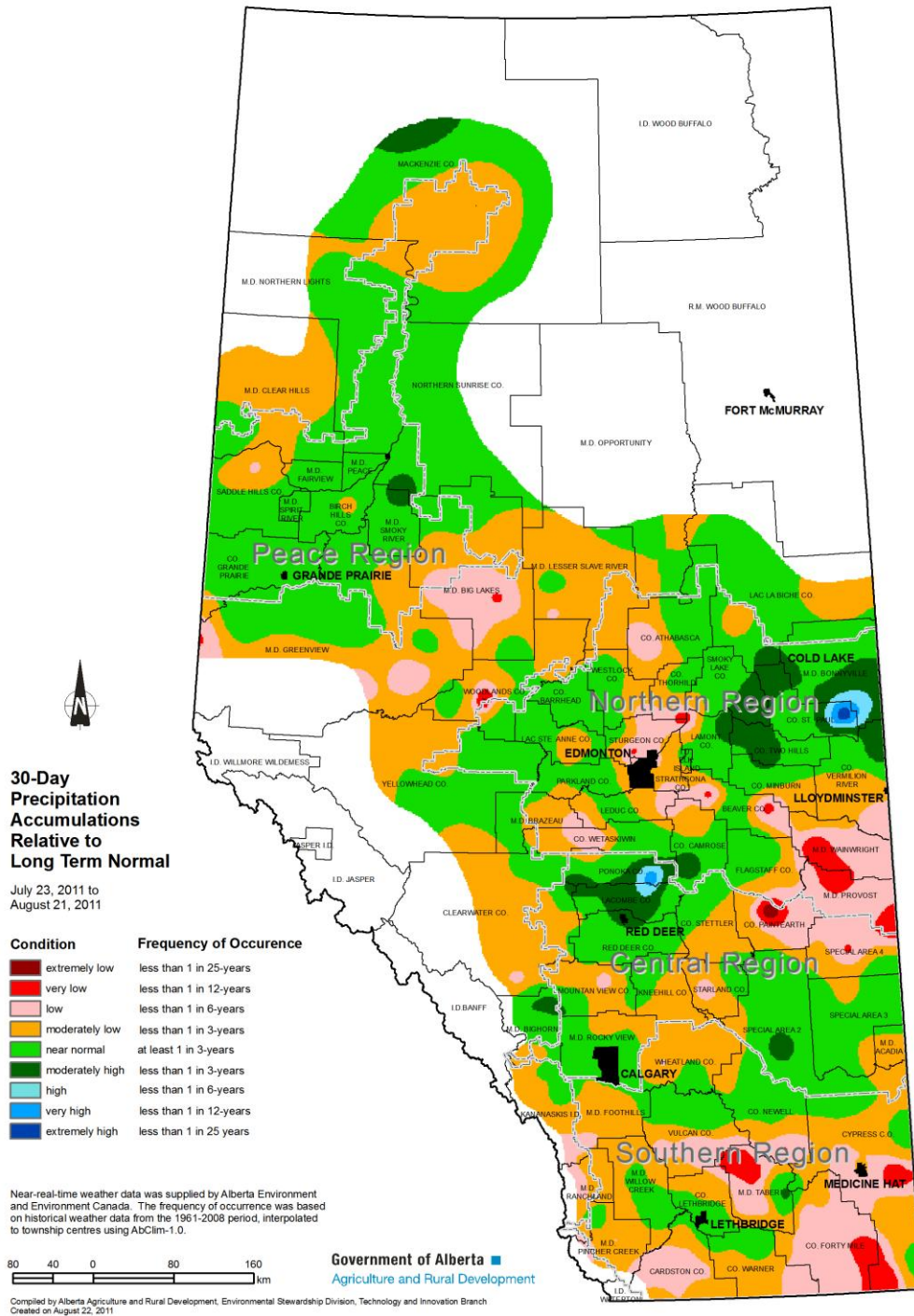
<http://www.agric.gov.ab.ca/app116/stationview.jsp>.

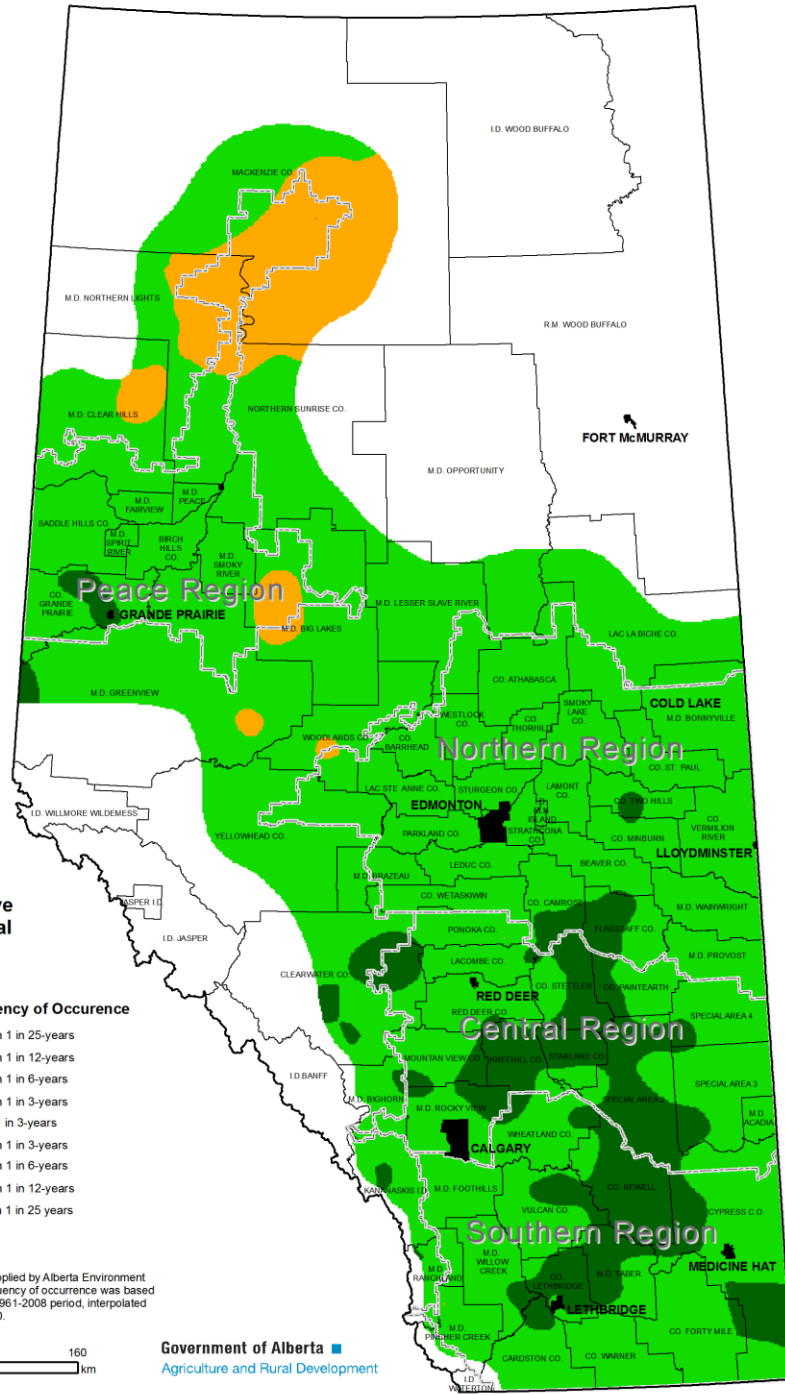
Note: Data has about a two hour lag and is displayed in MST (add one hour for daylight savings time)

Ralph Wright

Soil Moisture Specialist

Head, Agrometeorology Applications and Modelling Section, ARD





**15-Day
Average Daily Mean
Temperature Relative
to Long Term Normal**
August 07, 2011 to
August 21, 2011

Condition	Frequency of Occurrence
extremely high	less than 1 in 25-years
very high	less than 1 in 12-years
high	less than 1 in 6-years
moderately high	less than 1 in 3-years
near normal	at least 1 in 3-years
moderately low	less than 1 in 3-years
low	less than 1 in 6-years
very low	less than 1 in 12-years
extremely low	less than 1 in 25-years

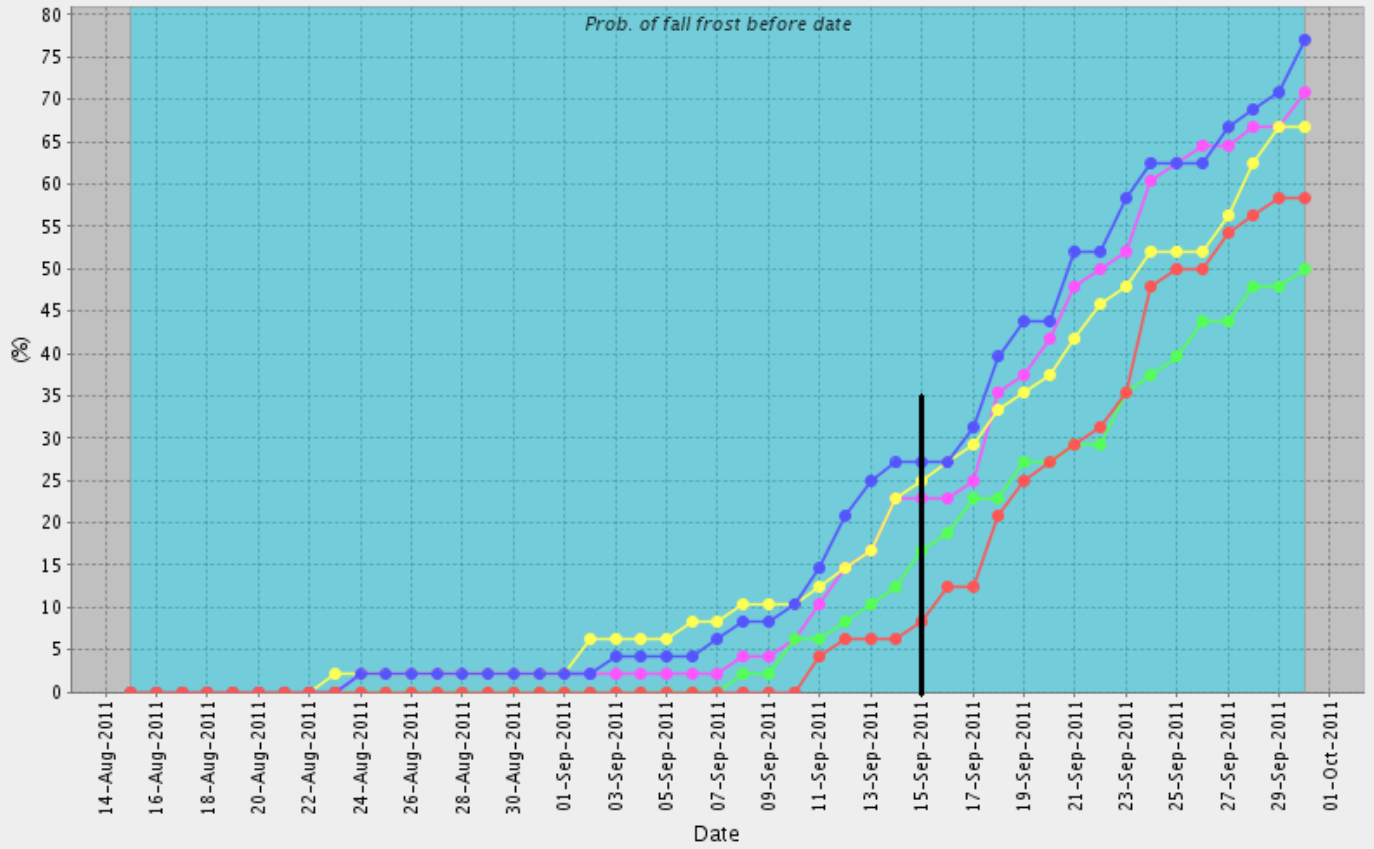
Near-real-time weather data was supplied by Alberta Environment and Environment Canada. The frequency of occurrence was based on historical weather data from the 1961-2008 period, interpolated to township centres using AbClim-1.0.



Government of Alberta
Agriculture and Rural Development

Compiled by Alberta Agriculture and Rural Development, Environmental Stewardship Division, Technology and Innovation Branch
Created on August 22, 2011

Daily Station Observations in MST: Created August 23, 2011



- Frost Probability -2°C (%) Lethbridge A
- Frost Probability -2°C (%) Red Deer A
- Frost Probability -2°C (%) Edmonton Municipal CR10
- Frost Probability -2°C (%) Grande Prairie A
- Frost Probability -2°C (%) Strathmore IMCIN