



VOIT 43 – Area in the ‘extreme’ and ‘high’ Fire Behaviour Potential rating categories across the DFA, over the planning horizon (5.2.1.1B).

Table 27 summarizes the forecasted area and proportion of forested landbase within the Defined Forest Area (DFA) that is forecasted to fall within the “extreme” and “high” Fire Behaviour Potential (FBP) category at years 0, 10, 20 and 50 of the 200-year planning horizon.

Table 27. DFA projected area of extreme and high FBP ranking at years 0, 10, 20 and 50 of the 200-year planning horizon.

FBP Value	FBP Description	2007		2017		2027		2057	
		(ha)	(%)	(ha)	(%)	(ha)	(%)	(ha)	(%)
N/A	N/A	14,504	3%	14,504	3%	14,504	3%	14,504	3%
1 - 10	Low	145,468	32%	138,620	31%	136,228	30%	132,309	29%
11 - 30	Moderate	137,364	30%	130,139	29%	123,481	27%	131,774	29%
31 - 70	High	58,904	13%	56,304	12%	57,095	13%	49,644	11%
71 - 100	Extreme	96,231	21%	112,905	25%	121,165	27%	124,241	27%
Total		452,471	100%	452,471	100%	452,471	100%	452,471	100%
31 - 100	High + Extreme	155,135	34%	169,209	37%	178,259	39%	173,884	38%

Figure 27, Figure 28, Figure 29 and Figure 30 illustrate the distribution of FBP rating category within the DFA at years 0, 10, 20 and 50, respectively, over the 200-year planning horizon.

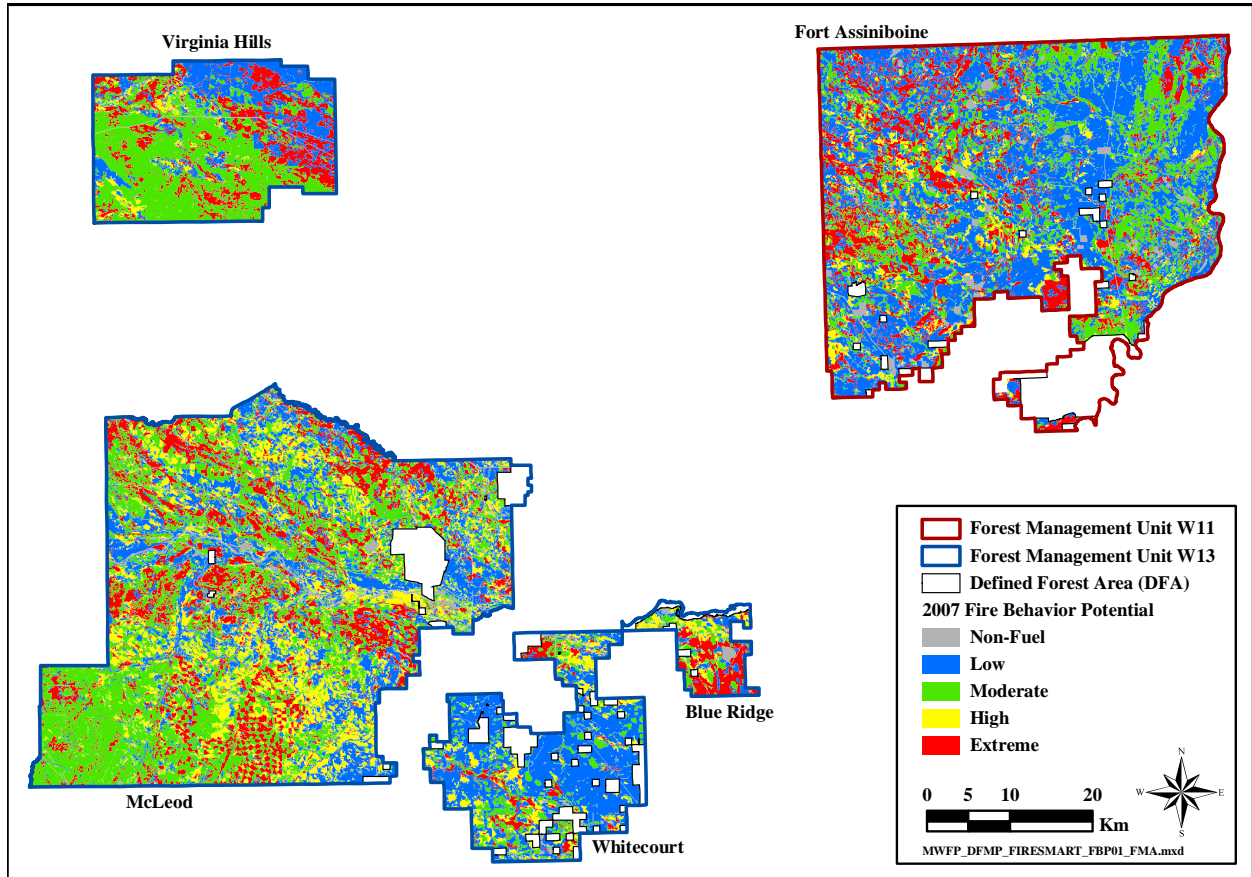


Figure 27. DFA projected FBP ranking at year 0.

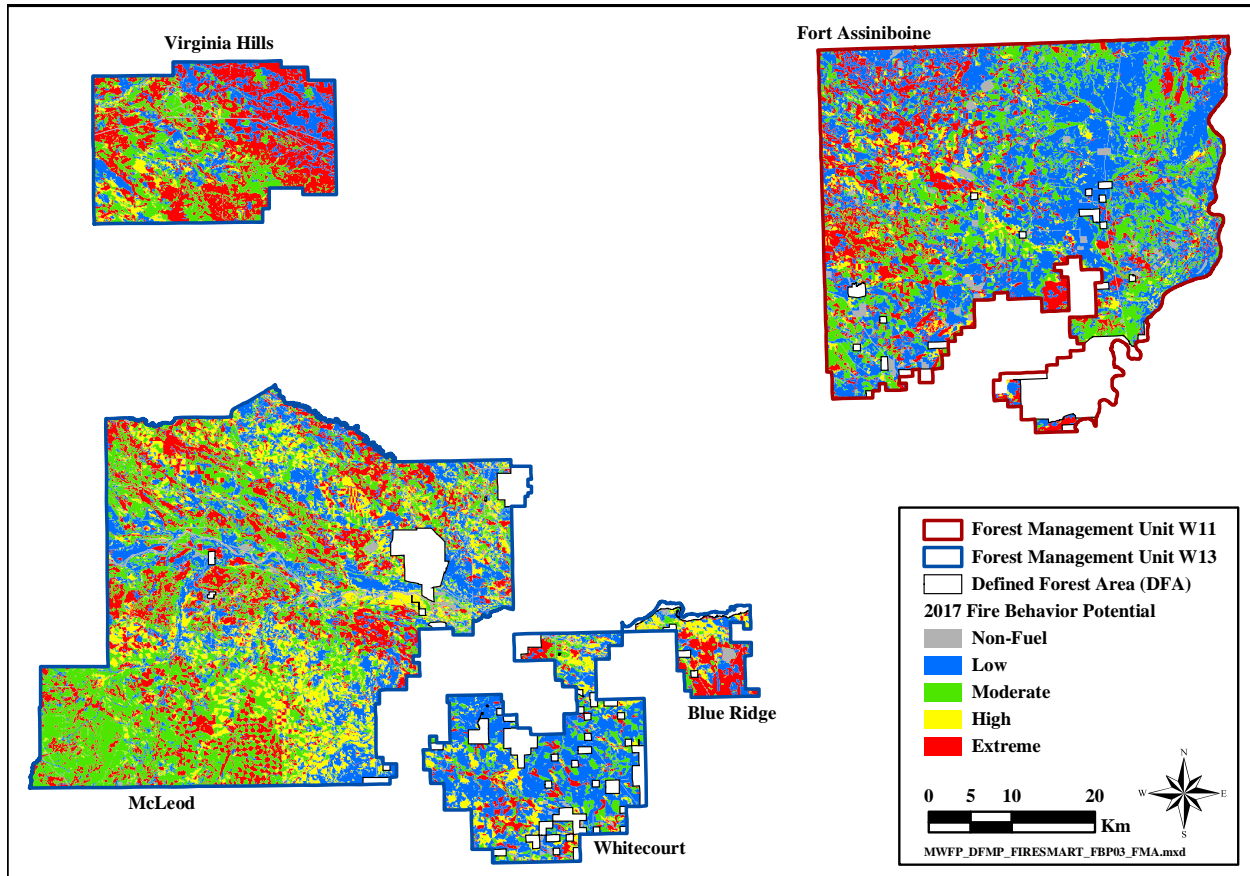


Figure 28. DFA projected FBP ranking at year 10.