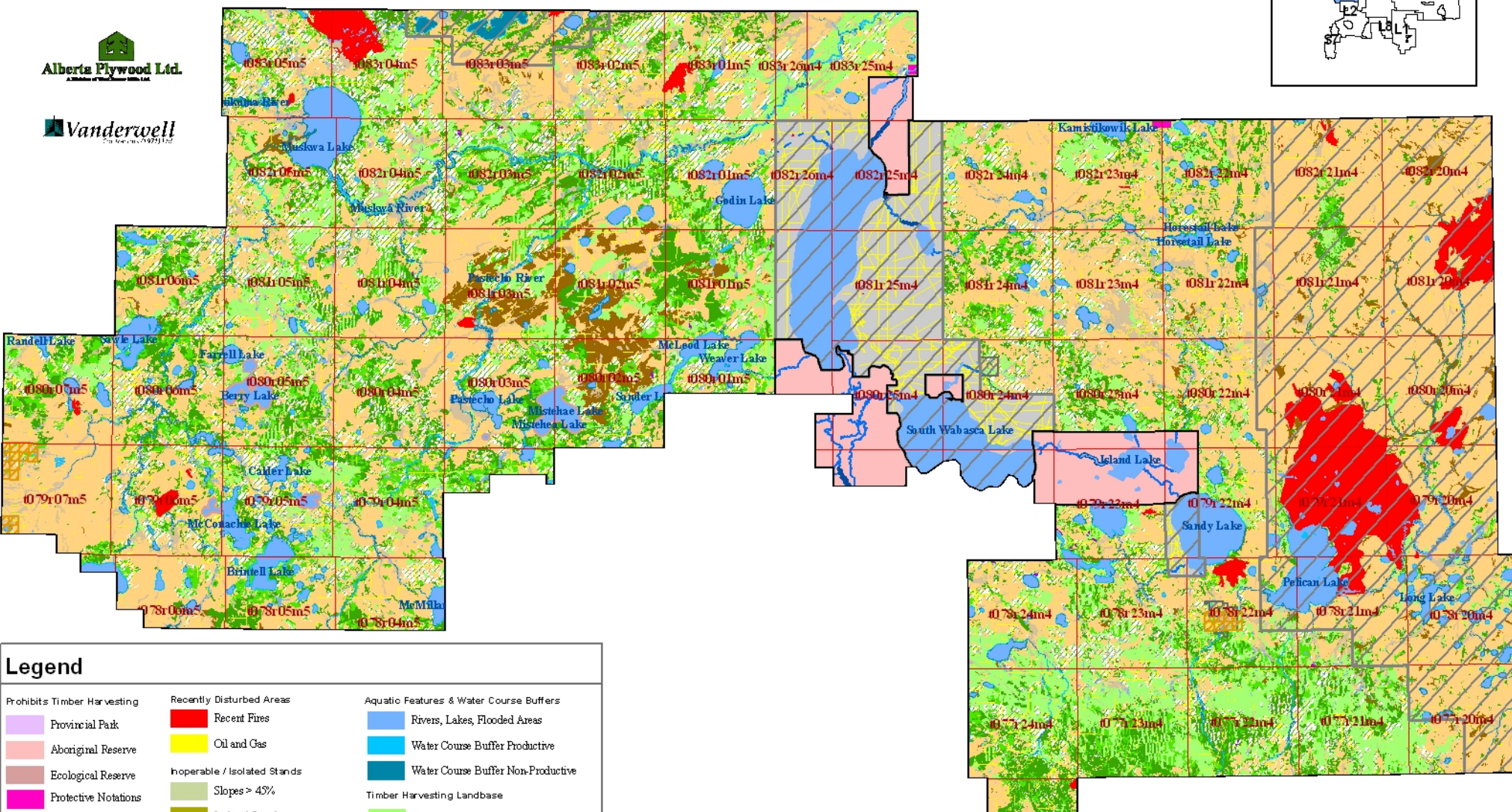


Alberta-Pacific FMU S18 Netdown Classification



Legend

Prohibits Timber Harvesting	Recently Disturbed Areas	Aquatic Features & Water Course Buffers
Provincial Park	Recent Fires	Rivers, Lakes, Flooded Areas
Aboriginal Reserve	Oil and Gas	Water Course Buffer Productive
Ecological Reserve	Inoperable / Isolated Stands	Water Course Buffer Non-Productive
Protective Notations	Slopes > 45%	Timber Harvesting Landbase
PSP Buffers	Isolated Stands	Harvestable Deciduous
River Breaks (Deciduous Only)	Non-Forested Pre-91 Cutblocks	Harvestable Mixedwood
Private Land Reduction	Non-Forested Natural Disturbance Areas	Harvestable Coniferous
	Non-Forested Stand Area	Harvestable Deciduous with Coniferous Understorey
	Non-Commercial Stand Area	

Land Tenure Status	Embedded Non-J Land Classification
Non-J Area	Grazing Leases
Aboriginal Reserves	Maintain Our Forest Blocks

1:500,000

 Created September 2007

Alberta-Pacific FMA Area Landbase Summary Table

FMU S18



Forest Management Unit S18

Netdown Category	FMA Area(ha)	*Non-FMA Area(ha)	Total Area(ha)	Landbase (%)
Prohibits/Precludes Timber Harvesting				
Provincial Park	0.0	42.5	42.5	0.0%
Aboriginal Reserve	0.0	10,901.9	10,901.9	1.8%
Ecological Reserve	1,067.9	0.0	1,067.9	0.2%
Protected Notations (No Harvesting Permitted)	185.4	0.0	185.4	0.0%
PSP Buffers	95.2	0.0	95.2	0.0%
River Breaks	0.0	0.0	0.0	0.0%
Private Land	57.3	176.9	234.2	0.0%
<i>Sub-total</i>	1,405.8	11,121.3	12,527.1	2.1%
Recently Disturbed Areas				
Fire	3,337.1	15,803.7	19,140.8	3.2%
Oil and Gas	10,087.0	1,145.5	11,232.5	1.9%
<i>Sub-total</i>	13,424.1	16,949.2	30,373.3	5.0%
Inoperable / Isolated Stands				
Slope	0.0	0.0	0.0	0.0%
Isolated Harvestable stands	84.8	62.5	147.3	0.0%
Non-Forested (CC)	142.2	303.9	446.1	0.1%
Non-Forested Natural Disturbance	9,808.8	3,772.3	13,581.0	2.3%
Non-Forested Vegetated	25,735.2	19,819.7	45,555.0	7.6%
Anthropogenic Vegetated	1,131.9	291.0	1,422.9	0.2%
Anthropogenic Non-Vegetated	1,826.8	1,579.0	3,405.8	0.6%
Naturally Non-Vegetated	0.0	3.2	3.2	0.0%
Non-Commercial TPR	35,050.2	21,541.0	56,591.2	9.4%
Non-Commercial Species	34,202.6	19,374.7	53,577.3	8.9%
Non-Commercial Stand Density	1,124.9	903.9	2,028.8	0.3%
Non-Commercial Site Index	77,904.4	31,523.6	109,428.0	18.2%
Horizontal Stand Adjustment	595.6	20.3	615.9	0.1%
<i>Sub-total</i>	187,607.4	99,195.1	286,802.5	47.6%
Water Course Buffers				
Buffer	12,127.7	3,470.6	15,598.3	2.6%
<i>Sub-total</i>	12,127.7	3,470.6	15,598.3	2.6%
Aquatic Features				
Rivers	483.1	237.1	720.1	0.1%
Lakes	21,277.3	19,156.1	40,433.4	6.7%
Flooded Areas	3,147.0	224.0	3,371.1	0.6%
<i>Sub-total</i>	24,907.4	19,617.2	44,524.6	7.4%
Timber Harvesting Landbase				
Deciduous	111,708.3	9,751.8	121,460.1	20.2%
Deciduous / Coniferous	13,918.1	2,094.6	16,012.8	2.7%
Coniferous / Deciduous	16,337.8	3,354.4	19,692.1	3.3%
Coniferous	49,535.8	5,978.6	55,514.4	9.2%
<i>Sub-total</i>	191,500.0	21,179.4	212,679.4	35.3%
Grand Total	430,972.3	171,532.8	602,505.1	100.0%

* Non FMA Area consists of a combination of Phase 3 and AVI data.

