

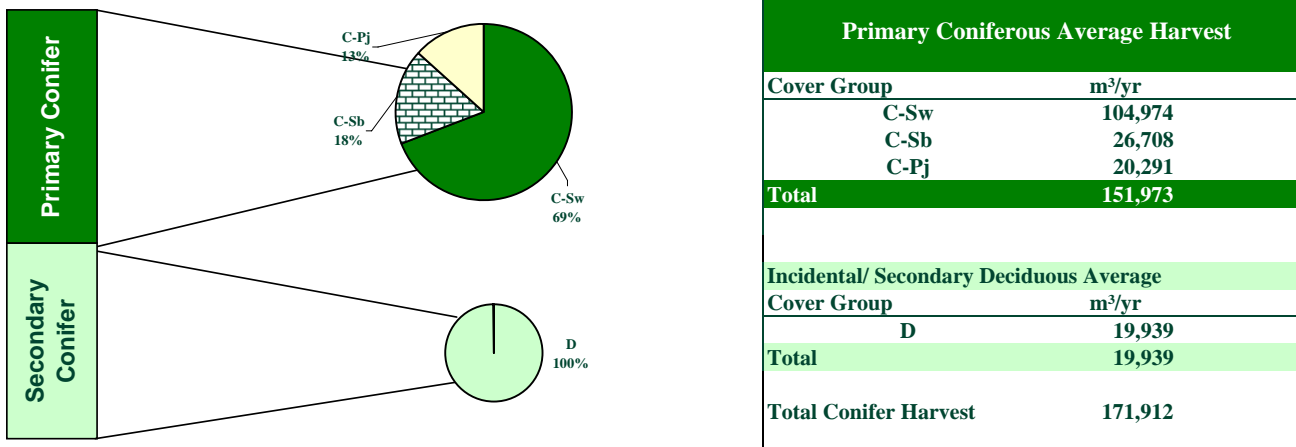
The Alberta-Pacific FMA Area Timber Supply Analysis

FMU L3

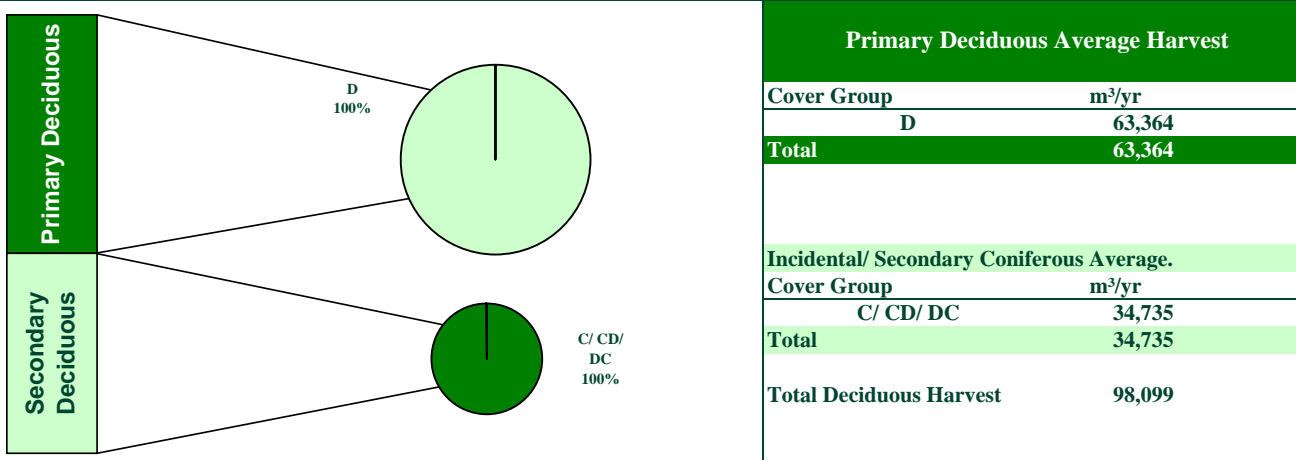


Summary Category	Coniferous	Deciduous	Total
Net Harvestable Landbase (ha)	-	-	140,821
Initial LRSY (m³/yr)	166,763	142,361	-
Woodstock™ Aspatial AAC (m³/yr)	155,513	71,264	226,777
Patchworks AAC - (m³/yr)	151,973	63,364	215,336
Stand Retention Deduction	0%	5%	-
Cull Deduction	2%	4%	-

Patchworks Coniferous Harvest Summary by Cover Type: 60-Year Average



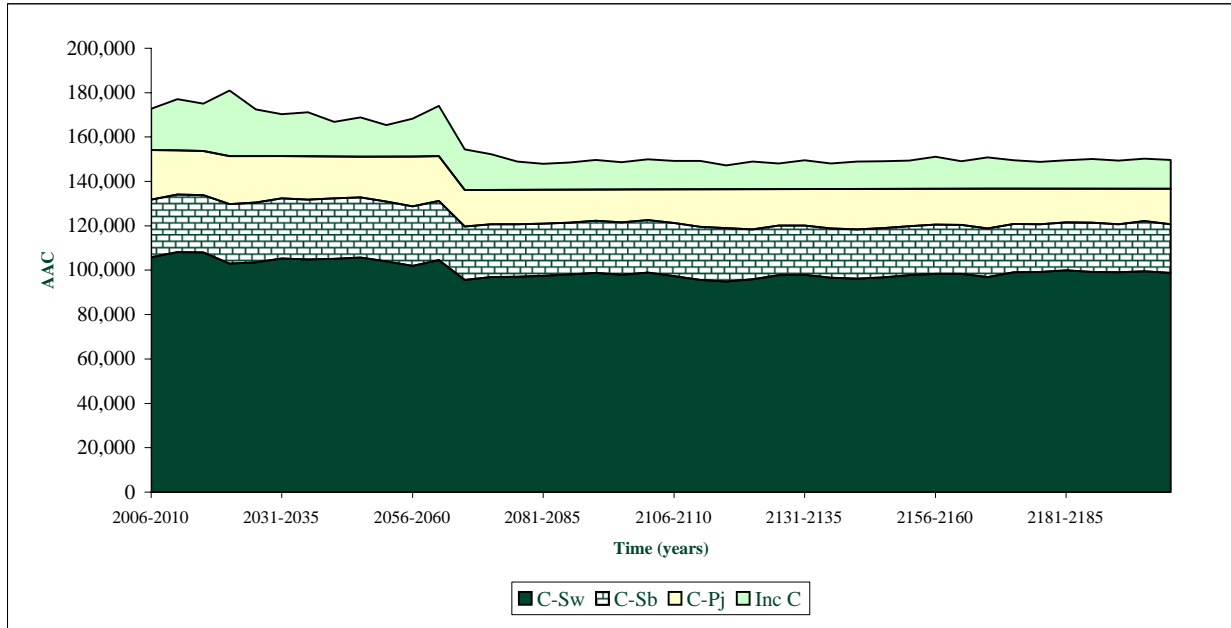
Patchworks Deciduous Harvest Summary by Cover Type: 60-Year Average



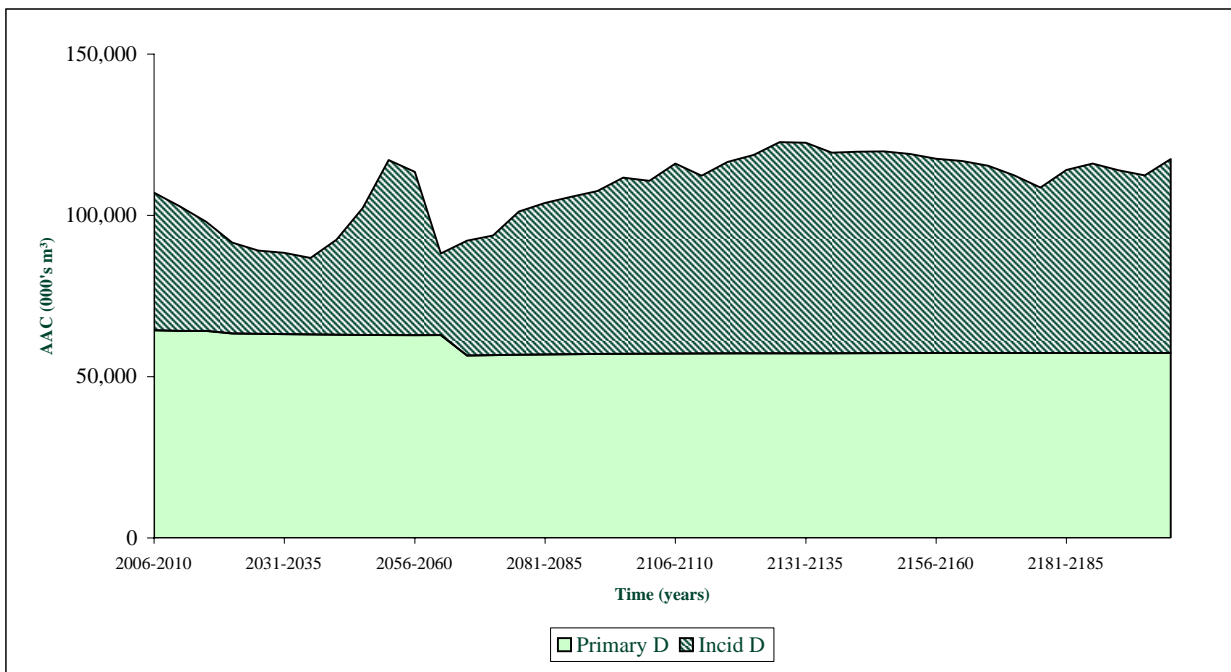
The Alberta-Pacific FMA Area Timber Supply Analysis FMU L3



FMA and Non FMA Coniferous AAC by Cover Type



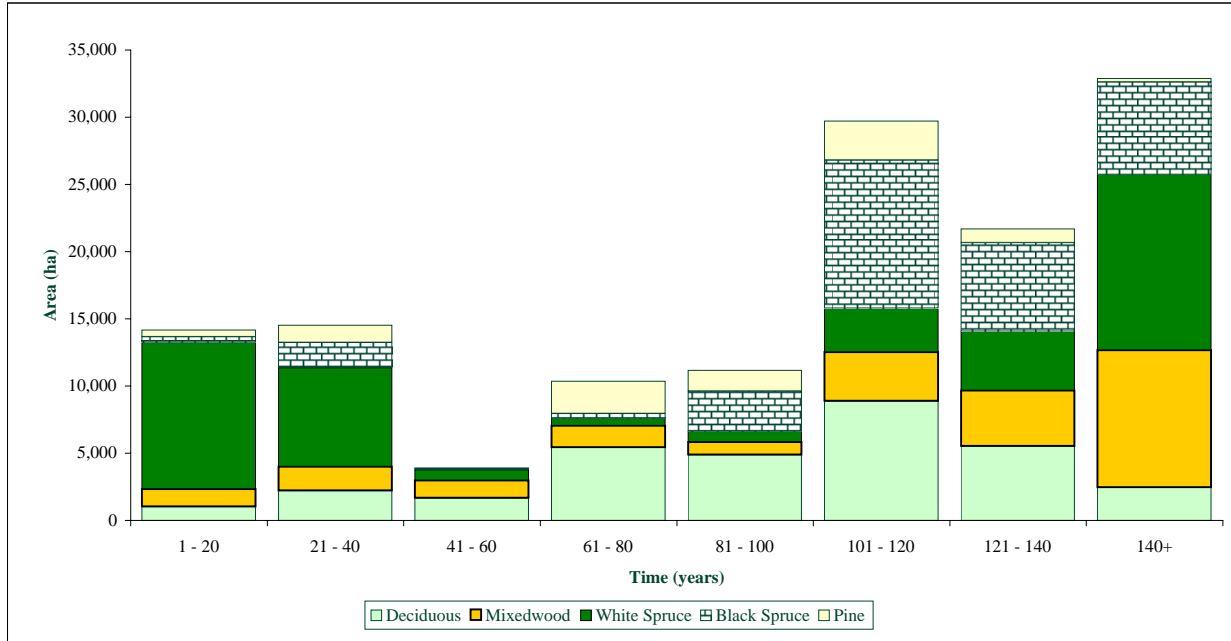
FMA Deciduous AAC by Cover Type



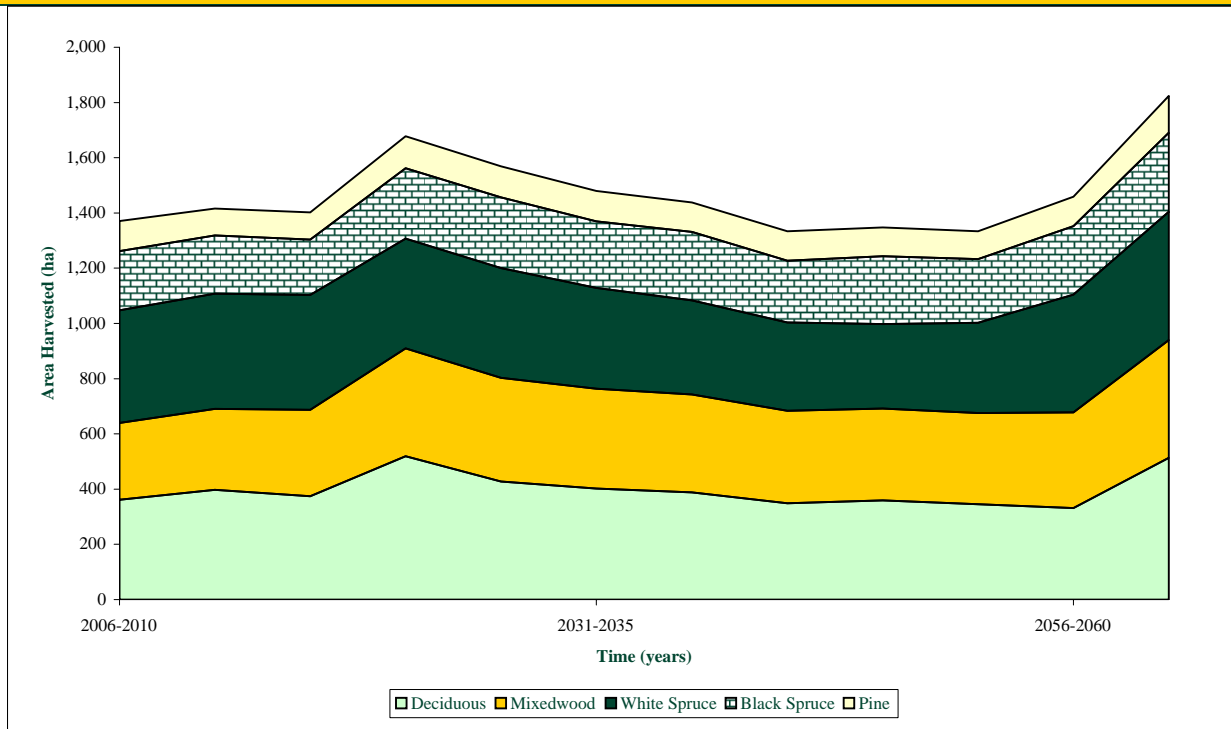
The Alberta-Pacific FMA Area Timber Supply Analysis FMU L3



Initial Ageclass Structure by Cover Type



Area Harvested by Cover Type

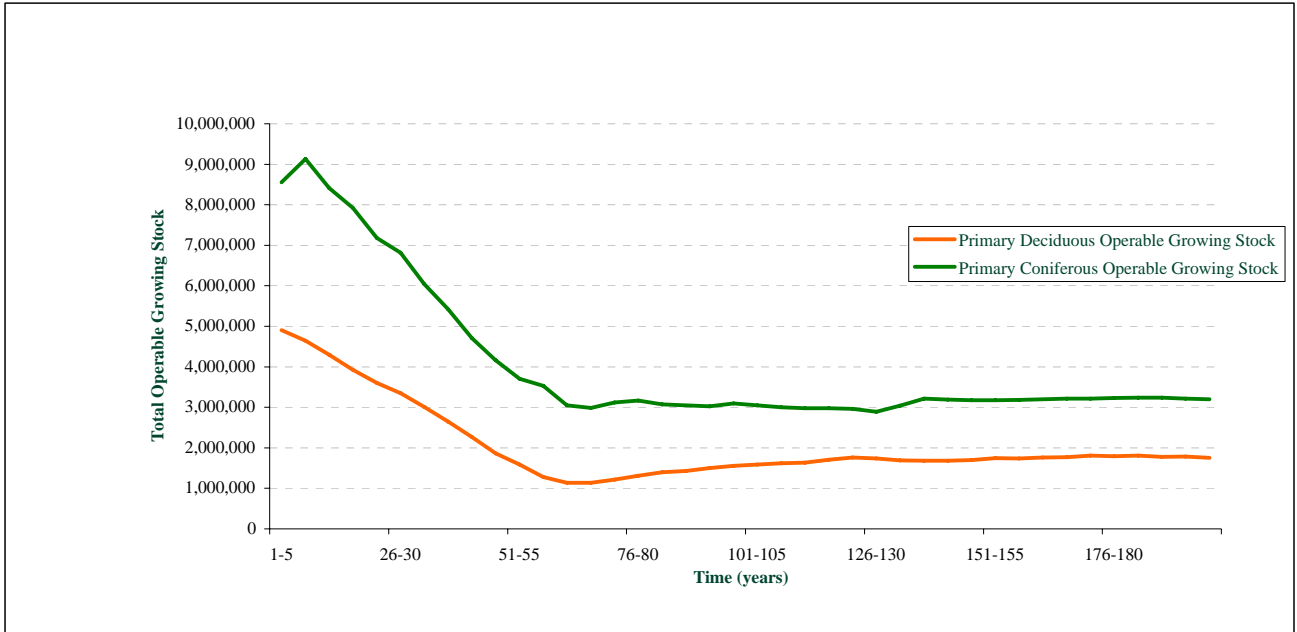


The Alberta-Pacific FMA Area Timber Supply Analysis

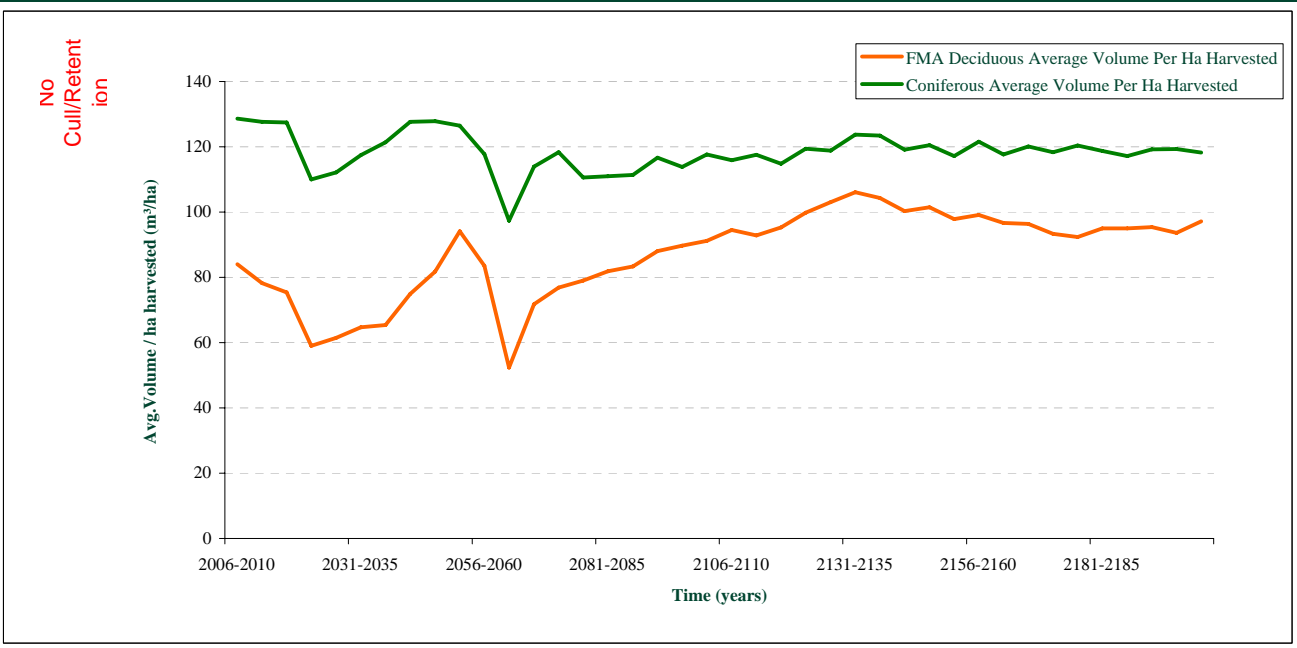
FMU L3



Growing Stock Over Time



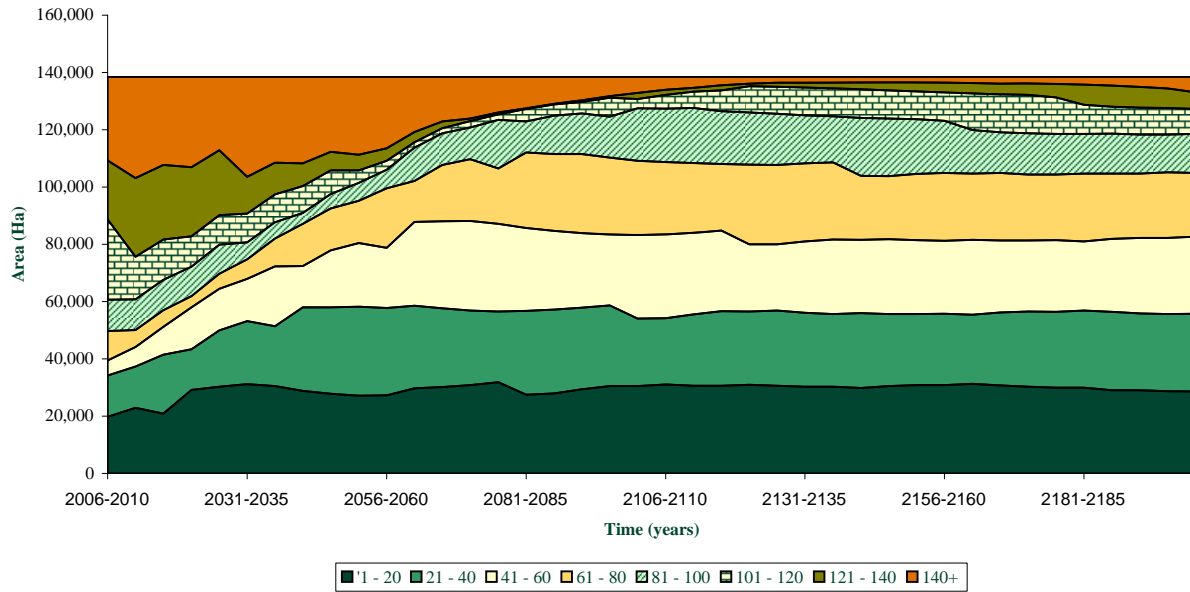
Average Volume Per Ha Harvested Over Time



The Alberta-Pacific FMA Area Timber Supply Analysis FMU L3



Age Class Distribution



Average Harvest Ages Over Time

Species Group	Now	+ 50 Years	+ 100 Years	+ 150 Years	+ 200 Years
Deciduous	115	114	86	92	90
Deciduous/Coniferous	132	85	81	90	94
Coniferous/Deciduous	140	109	106	116	106
White Spruce	151	86	95	104	98
Black Spruce	151	178	206	128	142
Pine	117	130	97	105	102